



STAINLESS STEEL  
**MAPLE TOP CHEF TABLES**



Model Above Shown with Rear Bar

Item #: \_\_\_\_\_ Qty #: \_\_\_\_\_  
 Model #: \_\_\_\_\_  
 Project #: \_\_\_\_\_



Under Shelf Model Shown

**FEATURES & CONSTRUCTION:**

Hard Wood Top.

Gussets welded to support channels.

**Rear Bar Models** have front to back leg braces bolted to legs and requires assembly. Rear bar is welded to legs.

**Center Bar Models** have front to back Leg braces welded to legs. Center bar bolts to legs and requires assembly.

**Under Shelf Models** have aluminum die cast "leg-to-shelf" clamp to secure shelf to leg eliminating unsightly nuts & bolts.

Shelf can be adjusted to desired height.

**MATERIAL:**

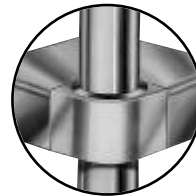
**TOP:** Laminated 2" Thick HARD MAPLE.

**SHELF:** 18 gauge stainless steel.

**LEGS:** 1 5/8" diameter tubular stainless steel.

Stainless steel gussets.

1" adjustable stainless steel bullet feet.



Under Shelf Models Feature  
 "THE PROVEN"  
 ORIGINAL ADVANCE TABCO  
 Adjustable Underself  
 with Die Cast Leg Clamp



Cross & Rear Bar Models Feature  
 1-5/8" Leg Brace to  
 Ensure Stability

**Under Shelf Models**

L	24" Wide	30" Wide
48"	H2S-244RE	H2S-304RE
60"	H2S-245RE	H2S-305RE
72"	H2S-246RE	H2S-306RE

**Rear Bar Models**

L	24" Wide	30" Wide
48"	TH2S-244RE	TH2S-304RE
60"	TH2S-245RE	TH2S-305RE
72"	TH2S-246RE	TH2S-306RE

CENTER BAR MODELS  
 AVAILABLE!

ADD

**MODEL # TA-61RE**  
 TO REAR BAR MODEL



BP-255RE  
 Stainless Steel Casters

**Accessories**

Model	Description
TA-33RE	42" Bar Stool Table Height. Add to Model Number.
BP-255RE	Set of Four - 5" Stainless Steel Commercial Casters (2 with Brakes)
NS-2020RE	20" x 20" x 5" Stainless Steel Drawer (Table will Include Drawer Brackets. Drawer Installation Required)



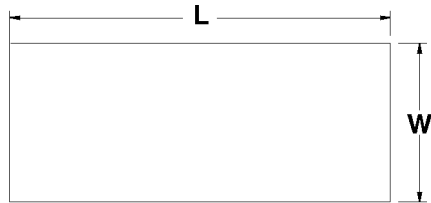
NS-2020RE  
 Stainless Steel Drawer

# DIMENSIONS and SPECIFICATIONS

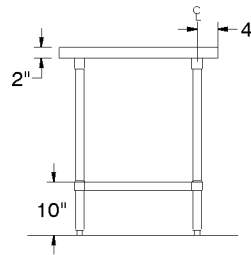
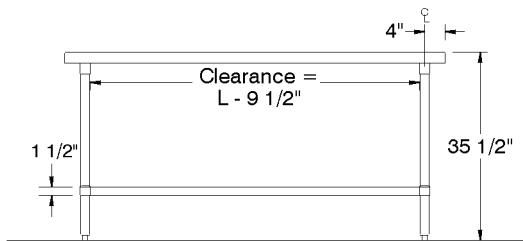
ALL DIMENSIONS ARE TYPICAL TOL ± .500"

All Units Shipped Unassembled (KD) for Reduced Shipping Costs.

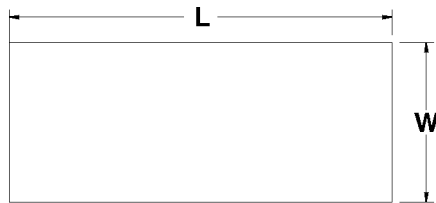
## UNDER SHELF MODELS



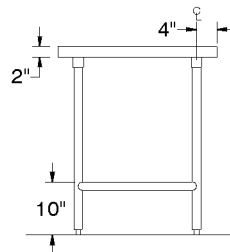
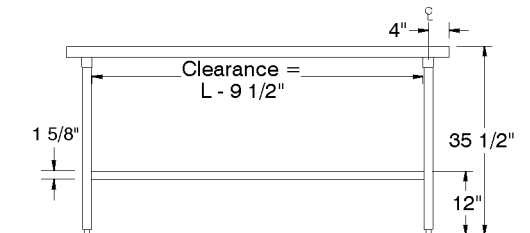
L	24" Wide	Wt.	30" Wide	Wt.
48"	H2S-244RE	100 lbs.	H2S-304RE	120 lbs.
60"	H2S-245RE	125 lbs.	H2S-305RE	150 lbs.
72"	H2S-246RE	150 lbs.	H2S-306RE	180 lbs.



## REAR BAR MODELS



L	24" Wide	Wt.	30" Wide	Wt.
48"	TH2S-244RE	80 lbs.	TH2S-304RE	96 lbs.
60"	TH2S-245RE	100 lbs.	TH2S-305RE	120 lbs.
72"	TH2S-246RE	120 lbs.	TH2S-306RE	144 lbs.



**CENTER BAR MODELS AVAILABLE!**  
**ADD MODEL # TA-61RE TO REAR BAR MODEL**

