



LKT Laboratories, Inc.

Omeprazole Related Compound A

Phone: 888-558-5227

651-644-8424

Fax: 888-558-7329

Email: getinfo@lctlabs.com

Web: lctlabs.com

Product Information

Product ID O486180

CAS No. 88546-55-8

Chemical Name 5-Methoxy-2-(((4-methoxy-3,5-dimethylpyridin-2-yl)methyl)sulfonyl)-1H-benzo[d]imidazole

Synonym Omeprazole sulfone; Omeprazole sulphone; omeprazole impurity D; Omeprazole metabolite Omeprazole sulfone; UNII-76X040Z740

Formula C₁₇H₁₉N₃O₄S

Formula Wt. 361.42

Melting Point

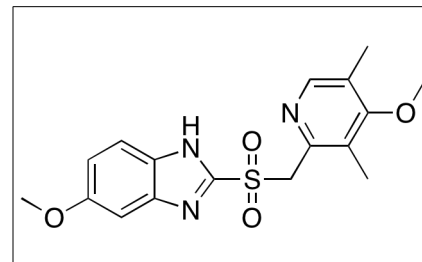
Purity ≥99%

Solubility

Store Temp -20°C

Ship Temp Ambient

Description Omeprazole related compound A (omeprazole sulfone) is a metabolite of omeprazole found in individuals who are taking the drug. The isozyme, CYP3A4, of the P450 drug metabolizing enzyme appears to be responsible for the oxidation of the sulfoxide of omeprazole in a stereoselective manner to its sulfone. TEST!!!!!!



Pricing and Availability

Bulk quantities available upon request

Product ID	Size	List Price
O486180	5 mg	\$94.50
O486180	25 mg	\$336.00
O486180	100 mg	\$1013.30

References Mihaly GW, Prichard PJ, Smallwood RA, et al. Simultaneous high-performance liquid chromatographic analysis of omeprazole and its sulphone and sulphide metabolites in human plasma and urine. J Chromatogr. 1983;278(2):311-9. PMID: 6668312.

Abelö A1, Andersson TB, Antonsson M, et al. Stereoselective metabolism of omeprazole by human cytochrome P450 enzymes. Drug Metab Dispos. 2000;28(8):966-72. PMID: 10901708

Caution: This product is intended for laboratory and research use only. It is not for human or drug use.