



LKT Laboratories, Inc.
GW 405833

Phone: 888-558-5227
651-644-8424
Fax: 888-558-7329
Email: getinfo@lktlabs.com
Web: lktlabs.com

Product Information

Product ID G880000

CAS No. 180002-83-9

Chemical Name (2,3-dichlorophenyl)-[5-methoxy-2-methyl-3-(2-morpholin-4-ylethyl)indol-1-yl]methanone

Synonym L-768,242, GW405833

Formula C₂₃H₂₄Cl₂N₂O₃

Formula Wt. 447.356

Melting Point

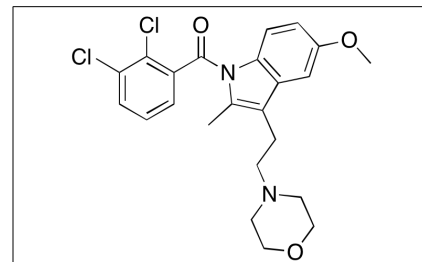
Purity ≥98%

Solubility 50mM in DMSO,
50mM in ethanol

Store Temp -20°C

Ship Temp Ambient

Description GW405833 is a selective cannabinoid receptor 2 (CB2) agonist. It shows activity in pancreatic cancer mouse models and reduces the number of Ca²⁺ oscillations in pancreatic acinar cells, which is a cause of pancreatitis. TEST!!!!!!



Pricing and Availability

Bulk quantities available upon request

Product ID	Size	List Price
G880000	1 mg	\$47.30
G880000	5 mg	\$115.50
G880000	25 mg	\$341.30

References Huang Z, Wang H, Wang J et al. Cannabinoid receptor subtype 2 (CB2R) agonist, GW405833 reduces agonist-induced Ca(2+) oscillations in mouse pancreatic acinar cells. Sci Rep. 2016 Jul 19;6:29757. PMID: 27432473.

Mancini I, Brusa R, Quadrato G et al. Constitutive activity of cannabinoid-2 (CB2) receptors plays an essential role in the protean agonism of (+)AM1241 and L768242. Br J Pharmacol. 2009 Sep;158(1):382-91. PMID: 19552692.

Caution: This product is intended for laboratory and research use only. It is not for human or drug use.