



LKT Laboratories, Inc.

LY-2603618

Phone: 888-558-5227
651-644-8424
Fax: 888-558-7329
Email: getinfo@lctlabs.com
Web: lctlabs.com

Product Information

Product ID L9704

CAS No. 911222-45-2

Chemical Name

Synonym Rabusertib

Formula $C_{18}H_{22}BrN_5O_3$

Formula Wt. 436.31

Melting Point

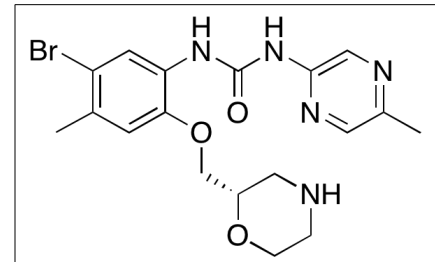
Purity $\geq 98\%$

Solubility 13mg/mL in DMSO,
insoluble in water and
ethanol

Store Temp $-20^{\circ}C$

Ship Temp Ambient

Description LY-2603618 is an inhibitor of checkpoint kinase (CHK) 1 that exhibits anticancer chemotherapeutic activity. In various animal models with tumor xenografts, this compound inhibits the S phase DNA damage checkpoint and increases DNA damage. In lung cancer cells, LY-2603618 induces G2/M phase cell cycle arrest and autophagy. LY-2603618 also enhances activity of other co-administered chemotherapeutics such as gemcitabine.
TEST!!!!!!



Pricing and Availability

Bulk quantities available upon request

Product ID	Size	List Price
L9704	1 mg	\$71.70
L9704	5 mg	\$148.90
L9704	10 mg	\$270.20
L9704	25 mg	\$551.30

References Barnard D, Diaz HB, Burke T, et al. LY2603618, a selective CHK1 inhibitor, enhances the anti-tumor effect of gemcitabine in xenograft tumor models. *Invest New Drugs*. 2015 Nov 27. [Epub ahead of print]. PMID: 26612134.

Wang FZ, Fei HR, Cui YJ, et al. The checkpoint 1 kinase inhibitor LY2603618 induces cell cycle arrest, DNA damage response and autophagy in cancer cells. *Apoptosis*. 2014 Sep;19(9):1389-98. PMID: 24928205.

King C, Diaz H, Barnard D, et al. Characterization and preclinical development of LY2603618: a selective and potent Chk1 inhibitor. *Invest New Drugs*. 2014 Apr;32(2):213-26. PMID: 24114124.

Caution: This product is intended for laboratory and research use only. It is not for human or drug use.