



LKT Laboratories, Inc.

Seproxetine Hydrochloride

Phone: 888-558-5227
651-644-8424
Fax: 888-558-7329
Email: getinfo@lktlabs.com
Web: lktlabs.com

Product Information

Product ID S1863

CAS No. 127685-30-7

Chemical Name (3S)-3-phenyl-3-[4-(trifluoromethyl)phenoxy]propan-1-amine; hydrochloride

Synonym Seproxetine HCl; LY215229 hydrochloride

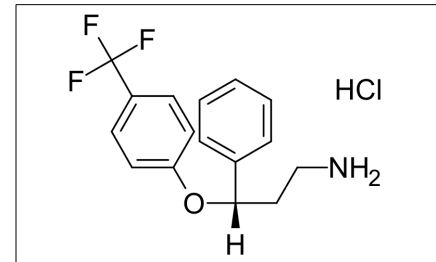
Formula $C_{16}H_{17}ClF_3NO$

Formula Wt. 331.76

Melting Point

Purity $\geq 95\%$

Solubility



Pricing and Availability

Bulk quantities available upon request

Product ID	Size	List Price
S1863	1 g	\$48.00
S1863	5 g	\$180.00

Store Temp -20°C

Ship Temp Ambient

Description Seproxetine is also known as S-norfluoxetine, an active metabolite of fluoxetine. Seproxetine is categorized as an SSRI, but acts as an inhibitor on both the serotonin and dopamine transporters (SERT, DAT) as well as 5-HT_{2A/2C} receptors. This compound was initially studied as a marketable antidepressant but potential for human use declined as a result of seproxetine's inhibition of KCNQ1/Kv7.1 K⁺ channels, which results in severe cardiac side effects such as QT interval prolongation. In socially-isolated animal models, seproxetine increases corticolimbic allopregnenolone levels, resulting in decreased aggressive behavior. TEST!!!!!!

References Veerman CC, Verkerk AO, Blom MT, et al. IKs Blockade Contributes Importantly to Drug-Induced Long QT Syndrome. *Circ Arrhythm Electrophysiol.* 2013 Aug 31. [Epub ahead of print]. PMID: 23995305.

Nelson M, Pinna G. S-norfluoxetine microinfused into the basolateral amygdala increases allopregnanolone levels and reduces aggression in socially isolated mice. *Neuropharmacology.* 2011 Jun;60(7-8):1154-9. PMID: 20971127.

Qu Y, Aluisio L, Lord B, et al. Pharmacokinetics and pharmacodynamics of norfluoxetine in rats: Increasing extracellular serotonin level in the frontal cortex. *Pharmacol Biochem Behav.* 2009 May;92(3):469-73. PMID: 19463261.

Caution: This product is intended for laboratory and research use only. It is not for human or drug use.