



# LKT Laboratories, Inc.

## Cetirizine Dihydrochloride

Phone: 888-558-5227  
651-644-8424  
Fax: 888-558-7329  
Email: [getinfo@lktlabs.com](mailto:getinfo@lktlabs.com)  
Web: [lktlabs.com](http://lktlabs.com)

### Product Information

**Product ID** C1876  
**CAS No.** 83881-52-1  
**Chemical Name** 2-[2-[4-[(4-chlorophenyl)-phenyl-methyl]piperazin-1-yl]ethoxy]acetic acid

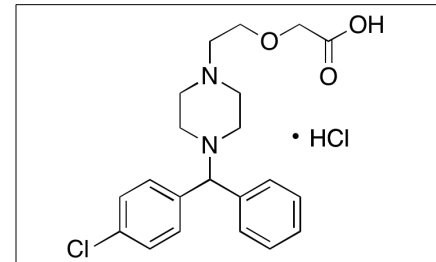
#### Synonym

**Formula**  $C_{21}H_{25}ClN_2O_3 \cdot 2HCl$   
**Formula Wt.** 461.82  
**Melting Point** 210-218 °C  
**Purity** ≥99%  
**Solubility** Soluble in water & Methanol

**Store Temp** Ambient

**Ship Temp** Ambient

**Description** Cetirizine is a second generation antihistamine that exhibits anti-inflammatory, immunomodulatory, and anti-allergic activities. Cetirizine inhibits histamine H1 receptors and is used to treat dermatitis in clinical settings. In vitro, cetirizine inhibits DNA binding activity of NF-κB, inhibits expression of adhesion molecules on immunocytes and endothelial cells, and inhibits production of IL-8 and leukotriene B4 (LTB4); this compound also increases release of prostaglandin E2 (PGE2), which suppresses antigen presentation and expression of MHC II on macrophages and decreases tryptase in mast cells. TEST!!!!!!



### Pricing and Availability

*Bulk quantities available upon request*

Product ID	Size	List Price
C1876	1 g	\$35.60
C1876	5 g	\$95.00
C1876	10 g	\$151.20
C1876	25 g	\$263.90

**References** Namazi MR. Cetirizine and allopurinol as novel weapons against cellular autoimmune disorders. *Int Immunopharmacol.* 2004 Mar;4(3):349-53. PMID: 15037212.

Bruno G, Andreozzi P, Magrini L, et al. Serum tryptase in allergic rhinitis: effect of cetirizine treatment. *Int J Immunopathol Pharmacol.* 2001 Sep-Dec;14(3):147-152. PMID: 12604015.

Slater JW, Zechnich AD, Haxby DG. Second-generation antihistamines: a comparative review. *Drugs.* 1999 Jan;57(1):31-47. PMID: 9951950.

**Caution:** This product is intended for laboratory and research use only. It is not for human or drug use.