



LKT Laboratories, Inc.

Timolol Maleate

Phone: 888-558-5227
651-644-8424
Fax: 888-558-7329
Email: getinfo@lktlabs.com
Web: lktlabs.com

Product Information

Product ID T3350

CAS No. 26921-17-5

Chemical Name (2S)-1-[(1,1-Dimethylethyl)amino]-3-[[4-(4-morpholinyl)-1,2,5-thiadiazol-3-yl]oxy]-2-propanol maleate

Synonym Betime, Blocadren, Istalol, Timacar, Timoptol: Proflax

Formula $C_{13}H_{24}N_4O_3S \cdot C_4H_4O_4$

Formula Wt. 432.50

Melting Point 202-203°C

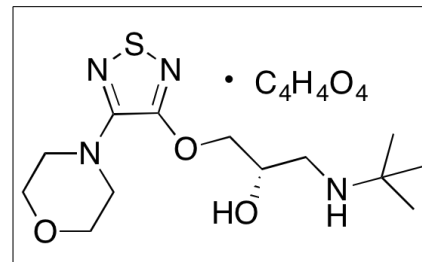
Purity ≥98%

Solubility Soluble in water, methanol, and ethanol.

Store Temp Ambient

Ship Temp Ambient

Description Timolol is a non-selective β -adrenergic receptor antagonist that exhibits antihypertensive activity. Timolol is clinically used to induce vascular relaxation in the ciliary artery. Timolol decreases intraocular pressure in the treatment of glaucoma. TEST!!!!!!



Pricing and Availability

Bulk quantities available upon request

Product ID	Size	List Price
T3350	100 mg	\$76.40
T3350	250 mg	\$161.20
T3350	1 g	\$458.40

References Johnson TV, Fan S, Zhan G, et al. Efficacy and mechanisms of intraocular pressure reduction with latanoprost and timolol in participants with ocular hypertension: a comparison of 1 and 6 weeks of treatment. J Glaucoma. 2010 Aug;19(6):356-64. PMID: 20179619.

Dong Y, Ishikawa H, Wu Y, et al. Effect and mechanism of betaxolol and timolol on vascular relaxation in isolated rabbit ciliary artery. Jpn J Ophthalmol. 2006 Nov-Dec;50(6):504-8. PMID: 17180523.

Caution: This product is intended for laboratory and research use only. It is not for human or drug use.