



LKT Laboratories, Inc.

Meglumine

Phone: 888-558-5227

651-644-8424

Fax: 888-558-7329

Email: getinfo@lktlabs.com

Web: lktlabs.com

Product Information

Product ID M1826

CAS No. 6284-40-8

Chemical Name 1-Deoxy-1-(methylamino)-D-glucitol

Synonym N-Methylglucamine, Meglumine

Formula C₇H₁₇NO₅

Formula Wt. 195.21

Melting Point 128-129°C

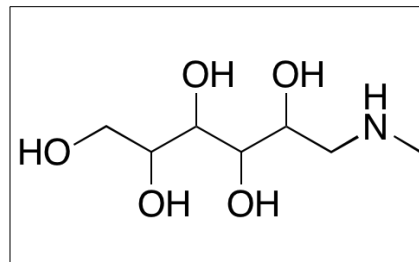
Purity ≥98%

Solubility Soluble in water and alcohol.

Store Temp Ambient

Ship Temp Ambient

Description Meglumine is an amino sugar derived from sorbitol that is clinically used as a bulking agent for other active compounds in the formulation of various pharmaceutical drugs, such as meglumine antimoniate and flunixin meglumine. TEST!!!!!!



Pricing and Availability

Bulk quantities available upon request

Product ID	Size	List Price
M1826	25 g	\$33.10
M1826	100 g	\$50.90
M1826	500 g	\$137.90
M1826	1 kg	\$248.10

References Borborema SE, Schwendener RA, Osso JA Jr, et al. Uptake and antileishmanial activity of meglumine antimoniate-containing liposomes in Leishmania (Leishmania) major-infected macrophages. *Int J Antimicrob Agents*. 2011 Oct;38(4):341-7. PMID: 21783345.

Rossetti RC, Perdigão A, Mesquita FS, et al. Effects of flunixin meglumine, recombinant bovine somatotropin and/or human chorionic gonadotropin on pregnancy rates in Nelore cows. *Theriogenology*. 2011 Sep 1;76(4):751-8. PMID: 21719091.

Caution: This product is intended for laboratory and research use only. It is not for human or drug use.