



LKT Laboratories, Inc.

Captopril

Phone: 888-558-5227
651-644-8424
Fax: 888-558-7329
Email: getinfo@lktlabs.com
Web: lktlabs.com

Product Information

Product ID C0261

CAS No. 62571-86-2

Chemical Name N-[(S)-3-Mercapto-2-methylpropionyl]-L-proline

Synonym (2S)-1-[(3-Mercapto-2-methylpropionyl)-L-proline, Aceplus, Hypertil, Tensoprel

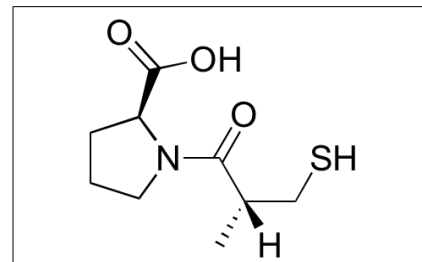
Formula C₉H₁₅NO₃S

Formula Wt. 217.29

Melting Point 104-108°C

Purity ≥81%

Solubility Soluble in water or ethanol.



Pricing and Availability

Bulk quantities available upon request

Product ID	Size	List Price
C0261	1 g	\$44.80
C0261	5 g	\$82.70
C0261	25 g	\$248.10

Store Temp Ambient

Ship Temp Ambient

Description Captopril is the first angiotensin-converting enzyme (ACE) inhibitor marketed; it is clinically used to treat hypertension, congestive heart failure (CHF), and diabetic nephropathy. Captopril exhibits antihypertensive, anti-metastatic, and anticancer chemotherapeutic activities. In animal models of lung cancer, captopril decreases tumor growth and metastasis and induces cellular apoptosis. TEST!!!!!!

References Zidane F, Zeder-Lutz G, Altschuh D, et al. Surface plasmon resonance analysis of the binding mechanism of pharmacological and peptidic inhibitors to human somatic angiotensin I-converting enzyme. *Biochemistry*. 2013 Dec 3;52(48):8722-31. PMID: 24168709.

Attoub S, Gaben AM, Al-Salam S, et al. Captopril as a potential inhibitor of lung tumor growth and metastasis. *Ann N Y Acad Sci*. 2008 Sep;1138:65-72. PMID: 18837885.

Caution: This product is intended for laboratory and research use only. It is not for human or drug use.