



LKT Laboratories, Inc.

Omeprazole Related Compound E

Phone: 888-558-5227

651-644-8424

Fax: 888-558-7329

Email: getinfo@lktlabs.com

Web: lktlabs.com

Product Information

Product ID O486184

CAS No. 176219-04-8

Chemical Name 6-Methoxy-2-[[[4-methoxy-3,5-dimethyl-1-oxido-2-pyridinyl)methyl]sulfinyl]-1H-benzimidazole

Synonym Omeprazole N-oxide; 4-Methoxy-2-(((5-methoxy-1H-benzo[d]imidazol-2-yl)sulfinyl)methyl)-3,5-dimethylpyridine 1-oxide

Formula C₁₇H₁₉N₃O₄S

Formula Wt. 361.42

Melting Point

Purity ≥98%

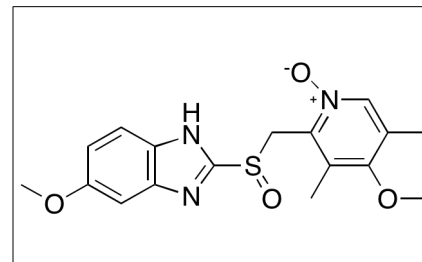
Solubility

Store Temp 4° C

Ship Temp Ambient

Description Omeprazole is a proton pump inhibitor (PPI) that acts as an antagonist at H⁺/K⁺ ATPases and is clinically used to treat gastroesophageal reflux disease (GERD), dyspepsia, and peptic ulcer disease. Omeprazole Related Compound E is an impurity that may be formed during the synthesis or degradation of omeprazole.

Omeprazole N-oxide is an impurity of omeprazole.



Pricing and Availability

Bulk quantities available upon request

Product ID	Size	List Price
O486184	5 mg	\$121.70
O486184	25 mg	\$350.70
O486184	100 mg	\$1030.30

References Tonazzi A, Eberini I, Indiveri C. Molecular mechanism of inhibition of the mitochondrial carnitine/acylcarnitine transporter by omeprazole revealed by proteoliposome assay, mutagenesis and bioinformatics. PLoS One. 2013 Dec 9;8(12):e82286. PMID: 24349247.

Ward RM, Kearns GL. Proton pump inhibitors in pediatrics : mechanism of action, pharmacokinetics, pharmacogenetics, and pharmacodynamics. Paediatr Drugs. 2013 Apr;15(2):119-31. PMID: 23512128.

Mefford IN, Mefford JT, Burris CA. Improved diabetes control and pancreatic function in a type 2 diabetic after omeprazole administration. Case Rep Endocrinol. 2012;2012:468609. PMID: 22937295.

Caution: This product is intended for laboratory and research use only. It is not for human or drug use.