



LKT Laboratories, Inc.

KPT-276

Phone: 888-558-5227

651-644-8424

Fax: 888-558-7329

Email: getinfo@lctlabs.com

Web: lctlabs.com

Product Information

Product ID K624760

CAS No. 1421919-75-6

Chemical Name (Z)-3-(3-(3,5-bis(trifluoromethyl)phenyl)-1H-1,2,4-triazol-1-yl)-1-(3,3-difluoroazetidin-1-yl)prop-2-en-1-one

Synonym KPT276

Formula C₁₆H₁₀F₈N₄O

Formula Wt. 426.27

Melting Point

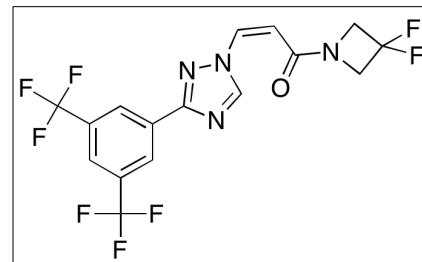
Purity ≥99%

Solubility DMSO, 20 mg/mL (46.9 mM). Water, Insoluble. Ethanol, Insoluble

Store Temp -20°C

Ship Temp Ambient

Description KPT-276 is a selective inhibitor of nuclear transport (SINE) that targets the export protein CRM1 (also known as XPO1). KPT-276 was shown to suppress tumor growth without major toxic effects in mice with Jeko-1 xenograft. In vivo treatment of human multiple myeloma cell lines was shown to reduce viability of the cells, to reduce levels of c-Myc, CDC25A, and BRD4, and to induce cell cycle arrest.



Pricing and Availability

Bulk quantities available upon request

Product ID	Size	List Price
K624760	1 mg	\$65.00
K624760	5 mg	\$85.00
K624760	25 mg	\$265.00

References Han X, Wang J, Shen Y, et al. CRM1 as a new therapeutic target for non-Hodgkin lymphoma. *Leuk Res.* 2015 Jan;39(1):38-46. PMID: 25466285.

Green AL, Ramkissoon SH, McCauley D, et al. Preclinical antitumor efficacy of selective exportin 1 inhibitors in glioblastoma. *Neuro Oncol.* 2015 May; 17(5):697-707. PMID: 25366336.

Schmidt J, Braggio E, Kortuem KM, et al. Genome-wide studies in multiple myeloma identify XPO1/CRM1 as a critical target validated using the selective nuclear export inhibitor KPT-276. *Leukemia.* 2013 Dec;27(12):2357-2365. PMID: 23752175.

Caution: This product is intended for laboratory and research use only. It is not for human or drug use.