



LKT Laboratories, Inc.

SR144528

Phone: 888-558-5227

651-644-8424

Fax: 888-558-7329

Email: [getinfo@lktlabs.com](mailto:getinfo@lktlabs.com)

Web: [lktlabs.com](http://lktlabs.com)

## Product Information

**Product ID** S680000

**CAS No.** 192703-06-3

**Chemical Name** 5-(4-chloro-3-methylphenyl)-1-[(4-methylphenyl)methyl]-N-[(1R,3S,4S)-2,2,4-trimethyl-3-bicyclo[2.2.1]heptanyl]pyrazole-3-carboxamide

**Synonym**

**Formula** C<sub>29</sub>H<sub>34</sub>ClN<sub>3</sub>O

**Formula Wt.** 476.06

**Melting Point**

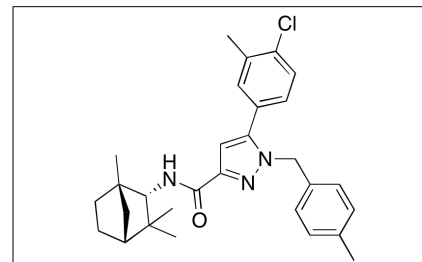
**Purity** ≥98%

**Solubility** Soluble in ethanol (~20 mg/ml), DMSO (~20 mg/ml), DMF (~20 mg/ml), and 1:1 ethanol: PBS (pH 7.2) (~0.5 mg/ml).

**Store Temp** -20°C

**Ship Temp** Ambient

**Description** SR144528 is a selective CB2 antagonist. It is used to study the role of cannabinoid receptor 2 in immunology, neuroscience and cancer. Recent research shows SR144528 to reduce immunoglobulin human SKW 6.4 cells.



## Pricing and Availability

**Bulk quantities available upon request**

Product ID	Size	List Price
S680000	1 mg	\$122.00
S680000	5 mg	\$226.00
S680000	25 mg	\$1002.00

**References** Feng R, Milcarek CA, Xie XQ. Antagonism of cannabinoid receptor 2 pathway suppresses IL-6-induced immunoglobulin IgM secretion. BMC Pharmacol Toxicol. 2014 Jun 9;15:30. PMID: 24913620.

Krylatov AV, Maslov LN, Lasukova OV and Pertwee RG. Cannabinoid receptor antagonists SR141716 and SR144528 exhibit properties of partial agonists in experiments on isolated perfused rat heart. Bull Exp Biol Med. 2005 May;139(5):558-61. PMID: 16224548.

**Caution:** This product is intended for laboratory and research use only. It is not for human or drug use.