



## Product Information

**Product ID** Z160021

**CAS No.** 5975-78-0

**Chemical Name** (11S)-15,17-dihydroxy-11-methyl-12-oxabicyclo[12.4.0]octadeca-1(18),14,16-triene-7,13-dione

**Synonym** (S)-Zearalanone, Zanone

**Formula** C<sub>18</sub>H<sub>24</sub>O<sub>5</sub>

**Formula Wt.** 320.39

**Melting Point**

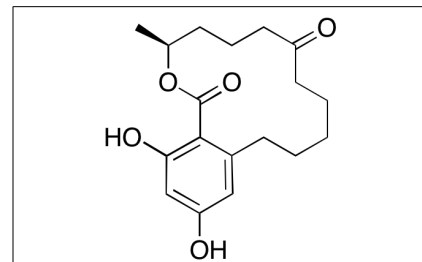
**Purity** ≥97%

**Solubility** Soluble in ethanol methanol, DMF or DMSO. Very slightly soluble in water.

**Store Temp** -20°C

**Ship Temp** Ambient

**Description** Zearalanone is a mycotoxin found in grains. It is closely related to the compound zearalenone, but is present at much lower concentrations. However, zearalanone induces a stronger estrogenic activity.



## Pricing and Availability

**Bulk quantities available upon request**

Product ID	Size	List Price
Z160021	1 mg	\$43.00
Z160021	5 mg	\$100.00
Z160021	10 mg	\$186.00
Z160021	25 mg	\$420.00

**References** Aoyama K, Ishikuro E, Noriduki H, et al. Formation ratios of zearalanone, zearalenols, and zearalanols versus zearalenone during incubation of *Fusarium semitectum* on sorghum and ratios in naturally contaminated sorghum. *Shokuhin Eiseigaku Zasshi*. 2015;56(6):247-251. PMID: 26699272.

Parveen M, Zhu Y, Kiyama R. Expression profiling of the genes responding to zearalenone and its analogues using estrogen-responsive genes. *FEBS Lett*. 2009 Jul 21;583(14):2377-2384. PMID: 19555691.

Thouvenot D, Morfin R, Di Stefano S, Picart D. Transformations of zearalenone and alpha-zearalanol by homogenates of human prostate glands. *Eur J Biochem*. 1981 Dec;121(1):139-145. PMID: 6459927.

**Caution:** This product is intended for laboratory and research use only. It is not for human or drug use.