

Product Information

Product ID W7200

CAS No. 1421227-52-2

Chemical Name

Synonym

Formula C₂₈H₃₀F₃N₇O₃

Formula Wt. 569.59

Melting Point

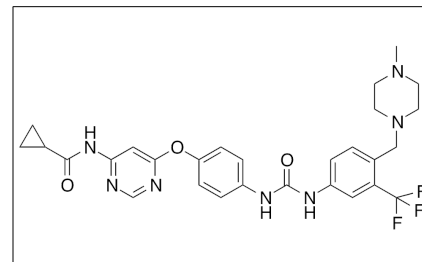
Purity ≥98%

Solubility DMSO 100 mg/mL
Ethanol 80 mg/mL
Water Insoluble

Store Temp -20°C

Ship Temp Ambient

Description WS3 is an activator of islet B cell proliferation that may display anti-diabetic activity. WS3 also promotes retinal pigment epithelial cell proliferation and is under examination as a potential treatment for macular degeneration.



Pricing and Availability

Bulk quantities available upon request

Product ID	Size	List Price
W7200	1 mg	\$38.60
W7200	5 mg	\$82.70
W7200	25 mg	\$248.10

References Swoboda JG, Elliott J, Deshmukh V, et al. Small molecule mediated proliferation of primary retinal pigment epithelial cells. ACS Chem Biol. 2013 Jul 19;8(7):1407-11. PMID: 23621521.

Shen W, Tremblay MS, Deshmukh VA, et al. Small-molecule inducer of B cell proliferation identified by high-throughput screening. J Am Chem Soc. 2013 Feb 6;135(5):1669-72. Erratum in: J Am Chem Soc. 2013 Mar 20;135(11):4573. PMID: 23330637.

Caution: This product is intended for laboratory and research use only. It is not for human or drug use.