



LKT Laboratories, Inc.

Reversine

Phone: 888-558-5227

651-644-8424

Fax: 888-558-7329

Email: getinfo@lktlabs.com

Web: lktlabs.com

Product Information

Product ID R1885

CAS No. 656820-32-5

Chemical Name

Synonym

Formula $C_{21}H_{27}N_7O$

Formula Wt. 393.50

Melting Point

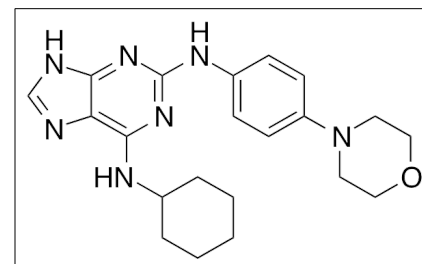
Purity $\geq 98\%$

Solubility DMSO: 7mg/mL
water: insoluble

Store Temp 4°C

Ship Temp Ambient

Description Reversine is a purine analog that reverses or induces differentiation. Reversine displays anticancer chemotherapeutic and anti-metastatic activities; it transforms preadipocytes into mesenchymal stem cells, induces autophagy in thyroid cancer cells, and downregulates expression of miR-133a miRNA. This compound induces apoptosis and cell death in breast cancer cells. In animal models of cancer, reversine inhibits focal adhesion disassembly, decreases cell motility and invasion, and prevents tumor metastasis.



Pricing and Availability

Bulk quantities available upon request

Product ID	Size	List Price
R1885	1 mg	\$75.00
R1885	5 mg	\$158.70
R1885	10 mg	\$278.70
R1885	25 mg	\$594.60

References Kuo CH, Lu YC, Tseng YS, et al. Reversine induces cell cycle arrest, polyploidy, and apoptosis in human breast cancer cells. *Breast Cancer*. 2014 May;21(3):358-69. PMID: 22926505.

Park JG, Lee DH, Moon YS, et al. Reversine increases the plasticity of lineage-committed preadipocytes to osteogenesis by inhibiting adipogenesis through induction of TGF- β pathway in vitro. *Biochem Biophys Res Commun*. 2014 Mar 28;446(1):30-6. PMID: 24548409.

Kim M, Yi SA, Lee H, et al. Reversine induces multipotency of lineage-committed cells through epigenetic silencing of miR-133a. *Biochem Biophys Res Commun*. 2014 Feb 28;445(1):255-62. PMID: 24513286.

Bijian K, Lougheed C, Su J, et al. Targeting focal adhesion turnover in invasive breast cancer cells by the purine derivative reversine. *Br J Cancer*. 2013 Nov 26;109(11):2810-8. PMID: 24169345.

Lu CH, Liu YW, Hua SC, et al. Autophagy induction of reversine on human follicular thyroid cancer cells. *Biomed Pharmacother*. 2012 Dec;66(8):642-7. PMID: 23089471.

Caution: This product is intended for laboratory and research use only. It is not for human or drug use.