



LKT Laboratories, Inc.

R-1-Isothiocyanato-7-(methylsulfinyl)-heptane

Phone: 888-558-5227

651-644-8424

Fax: 888-558-7329

Email: [getinfo@lktlabs.com](mailto:getinfo@lktlabs.com)

Web: [lktlabs.com](http://lktlabs.com)

## Product Information

Product ID I7455

CAS No.

Chemical Name

Synonym

Formula  $C_9H_{17}NOS_2$

Formula Wt. 219.37

Melting Point

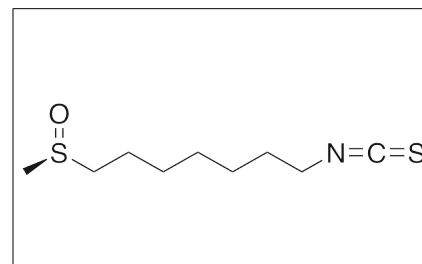
Purity  $\geq 98\%$

Solubility

Store Temp  $-20^{\circ}C$

Ship Temp Ambient

**Description** (R)-1-isothiocyanato-7-(methylsulfinyl)-heptane exhibits anticancer and antioxidative activities. This compound induces phase II enzymes such as quinone reductase, inhibits MMP9, and acts as a superoxide scavenger in vitro. It is a natural product isolated from watercress and is related to sulforaphane.



## Pricing and Availability

*Bulk quantities available upon request*

Product ID	Size	List Price
I7455	5 mg	\$299.60
I7455	10 mg	\$524.50
I7455	25 mg	\$1048.80

**References** Rose P, Huang Q, Ong CN, et al. Broccoli and watercress suppress matrix metalloproteinase-9 activity and invasiveness of human MDA-MB-231 breast cancer cells. *Toxicol Appl Pharmacol.* 2005 Dec 1;209(2):105-13. PMID: 15953625.

Kinae N, Masuda H, Shin IS, et al. Functional properties of wasabi and horseradish. *Biofactors.* 2000;13(1-4):265-9. PMID: 11237192.

Rose P, Faulkner K, Williamson G, et al. 7-Methylsulfinylheptyl and 8-methylsulfinyloctyl isothiocyanates from watercress are potent inducers of phase II enzymes. *Carcinogenesis.* 2000 Nov;21(11):1983-8. PMID: 11062158.

**Caution:** This product is intended for laboratory and research use only. It is not for human or drug use.