



LKT Laboratories, Inc.

Pimobendan

Phone: 888-558-5227
651-644-8424
Fax: 888-558-7329
Email: getinfo@lktlabs.com
Web: lktlabs.com

Product Information

Product ID P3456

CAS No. 74150-27-9

Chemical Name

Synonym Acardi, pimobendane

Formula $C_{19}H_{18}N_4O_2$

Formula Wt. 334.37

Melting Point

Purity $\geq 98\%$

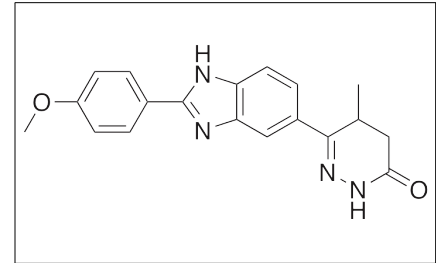
Solubility DMSO 67 mg/mL; Water <1 mg/mL; Ethanol 5 mg/mL

Store Temp Ambient

Ship Temp Ambient

Description

Pimobendan is a cardiovascular drug commonly used to treat congestive heart failure, dilated cardiomyopathy, and chronic valvular heart disease in veterinary medicine. This compound exhibits vasodilatory and antithrombotic activities, decreasing peripheral resistance and inhibiting platelet aggregation. Pimobendan selectively inhibits cardiac phosphodiesterase III (PDE3), increasing myocardial cAMP and causing positive inotropic effects such as an increase in heart rate, left ventricle systolic pressure, and left ventricle filling pressure, and a decrease in peripheral resistance (mean arterial pressure).



Pricing and Availability

Bulk quantities available upon request

Product ID	Size	List Price
P3456	10 mg	\$97.30
P3456	25 mg	\$149.90
P3456	100 mg	\$374.60
P3456	500 mg	\$1198.70

References Shipley EA, Hogan DF, Fiakpui NN, et al. In vitro effect of pimobendan on platelet aggregation in dogs. Am J Vet Res. 2013 Mar;74(3):403-7. PMID: 23438115.

Boyle KL, Leech E. A review of the pharmacology and clinical uses of pimobendan. J Vet Emerg Crit Care (San Antonio). 2012 Aug;22(4):398-408. PMID: 22928748.

Verdouw PD, Hartog JM, Duncker DJ, et al. Cardiovascular profile of pimobendan, a benzimidazole-pyridazinone derivative with vasodilating and inotropic properties. Eur J Pharmacol. 1986 Jul 15;126(1-2):21-30. PMID: 2875884.

Scholz H, Meyer W. Phosphodiesterase-inhibiting properties of newer inotropic agents. Circulation. 1986 Mar;73(3 Pt 2):III99-108. PMID: 2417748.

Caution: This product is intended for laboratory and research use only. It is not for human or drug use.