



**LKT Laboratories, Inc.**

**R-1-Isothiocyanato-8-(methylsulfinyl)-octane**

Phone: 888-558-5227

651-644-8424

Fax: 888-558-7329

Email: [getinfo@lktlabs.com](mailto:getinfo@lktlabs.com)

Web: [lktlabs.com](http://lktlabs.com)

## Product Information

Product ID I7460

CAS No.

Chemical Name

Synonym

Formula  $C_{10}H_{19}NOS_2$

Formula Wt. 233.39

Melting Point

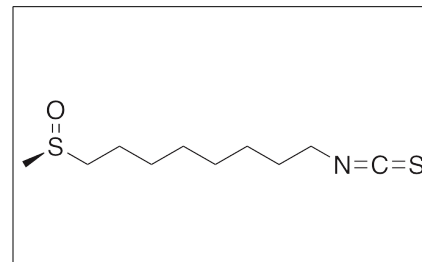
Purity  $\geq 98\%$

Solubility

Store Temp  $-20^{\circ}C$

Ship Temp Ambient

**Description** R-1-isothiocyanato-8-(methylsulfinyl)-octane is a phase II enzyme inducer, increasing quinone reductase levels in vitro. This compound is also found in watercress (*Nasturtium officinale*) and is related to sulforaphane.



## Pricing and Availability

**Bulk quantities available upon request**

Product ID	Size	List Price
I7460	1 mg	\$156.30
I7460	5 mg	\$275.30
I7460	10 mg	\$472.00
I7460	25 mg	\$944.00

**References** Rose P, Faulkner K, Williamson G, et al. 7-Methylsulfinylheptyl and 8-methylsulfinyloctyl isothiocyanates from watercress are potent inducers of phase II enzymes. Carcinogenesis. 2000 Nov;21(11):1983-8. PMID: 11062158.

**Caution:** This product is intended for laboratory and research use only. It is not for human or drug use.