



LKT Laboratories, Inc.

## Nimodipine

Phone: 888-558-5227  
651-644-8424  
Fax: 888-558-7329  
Email: [getinfo@lktlabs.com](mailto:getinfo@lktlabs.com)  
Web: [lktlabs.com](http://lktlabs.com)

### Product Information

**Product ID** N3448

**CAS No.** 66085-59-4

**Chemical Name** 1,4-Dihydro-2,6-dimethyl-4-(3-nitrophenyl)-3,5-pyridinedicarboxylic acid 2-methoxyethyl 1-methyl-ethyl ester

**Synonym** Periplum, Nimotop

**Formula** C<sub>21</sub>H<sub>26</sub>N<sub>2</sub>O<sub>7</sub>

**Formula Wt.** 418.44

**Melting Point** 125° C

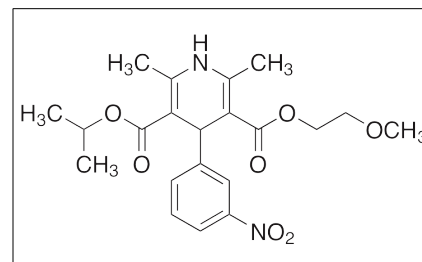
**Purity** ≥98%

**Solubility** Soluble in methanol or DMSO. Insoluble in water.

**Store Temp** ambient

**Ship Temp** Ambient

**Description** Nimodipine is an antagonist at L-type Ca<sup>2+</sup> channels that exhibits antihypertensive, neuroprotective, neuromodulatory, cognition enhancing, and anti-inflammatory activities. In animal models of subarachnoid hemorrhage, nimodipine prevents cerebral ischemia and vasospasm. Nimodipine also inhibits methylmercury-induced behavioral neurotoxicity in vivo. In animal models of Alzheimer's disease, nimodipine inhibits amyloid-β (Aβ)-stimulated release of IL-1β and resulting neurotoxicity. This compound also inhibits neurological symptoms of drug-induced withdrawal, suppressing anxiety, depression, and memory impairment.



### Pricing and Availability

**Bulk quantities available upon request**

Product ID	Size	List Price
N3448	100 mg	\$49.70
N3448	500 mg	\$126.80
N3448	1 g	\$220.50
N3448	5 g	\$529.20

**References** Bia A GY, Polak P, Michalak A, et al. Influence of calcium channel antagonists on nonsomatic signs of nicotine and d-amphetamine withdrawal in mice. *Pharmacol Rep.* 2014 Apr;66(2):212-22. PMID: 24911072.

Bailey JM, Hutsell BA, Newland MC. Dietary nimodipine delays the onset of methylmercury neurotoxicity in mice. *Neurotoxicology.* 2013 Jul;37:108-17. PMID: 23583802.

Sanz JM, Chiozzi P, Colaianna M, et al. Nimodipine inhibits IL-1β release stimulated by amyloid β from microglia. *Br J Pharmacol.* 2012 Dec;167(8):1702-11. PMID: 22831460.

Sharma N, Cho DH, Kim SY, et al. Magnesium sulfate suppresses L-type calcium currents on the basilar artery smooth muscle cells in rabbits. *Neurol Res.* 2012 Apr;34(3):291-6. PMID: 22450340.

Janjua N, Mayer SA. Cerebral vasospasm after subarachnoid hemorrhage. *Curr Opin Crit Care.* 2003 Apr;9(2):113-9. PMID: 12657973.

**Caution:** This product is intended for laboratory and research use only. It is not for human or drug use.