



LKT Laboratories, Inc.

## 5-Methoxyindole

Phone: 888-558-5227  
651-644-8424  
Fax: 888-558-7329  
Email: [getinfo@lktlabs.com](mailto:getinfo@lktlabs.com)  
Web: [lktlabs.com](http://lktlabs.com)

### Product Information

Product ID M1680

CAS No. 1006-94-6

Chemical Name 5-Methoxy-1H-indole

Synonym Femedol

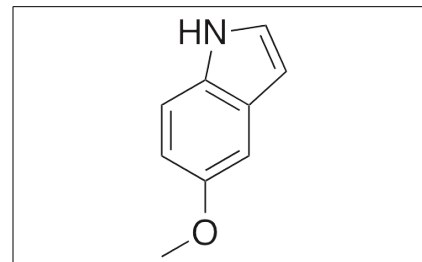
Formula  $C_9H_9NO$

Formula Wt. 147.17

Melting Point 52-55°C

Purity ≥98%

Solubility Insoluble in water.



### Pricing and Availability

*Bulk quantities available upon request*

Product ID	Size	List Price
M1680	1 g	\$45.30
M1680	5 g	\$112.60

Store Temp Ambient

Ship Temp Ambient

Description 5-Methoxyindole is the core structure of melatonin; it may be an endogenous ligand for PPAR $\gamma$  and may act as an agonist at 5-HT $_3$  receptors.

**References** Kong M, Liang J, Ali Q, et al. 5-Methoxyindole, a chemical homolog of melatonin, adversely affects the phytopathogenic fungus *Fusarium graminearum*. *Int J Mol Sci*. 2021 Oct 12;22(20):10991. PMID: 34681652.

Czimmerer Z, Varga T, Poliska S, et al. Identification of novel markers of alternative activation and potential endogenous PPAR $\gamma$  ligand production mechanisms in human IL-4 stimulated differentiating macrophages. *Immunobiology*. 2012 Dec;217(12):1301-14. PMID: 22954708.

Koike T, Hoashi Y, Takai T, et al. 1,6-Dihydro-2H-indeno[5,4-b]furan derivatives: design, synthesis, and pharmacological characterization of a novel class of highly potent MT $_2$ -selective agonists. *J Med Chem*. 2011 May 12;54(9):3436-44. PMID: 21473625.

**Caution:** This product is intended for laboratory and research use only. It is not for human or drug use.