



## Product Information

**Product ID** L0211

**CAS No.** 4618-18-2

**Chemical Name** 4-O-b-D-Galactopyranosyl-D-fructose

**Synonym** Bifiteral, Cephalac, Generlac, Lactuflo, Normase

**Formula** C<sub>12</sub>H<sub>22</sub>O<sub>11</sub>

**Formula Wt.** 342.30

**Melting Point** 169° C

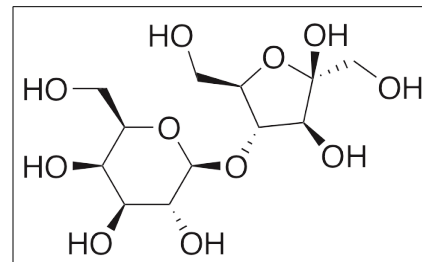
**Purity** ≥99%

**Solubility** Soluble in water.

**Store Temp** Ambient

**Ship Temp** Ambient

**Description** Lactulose is a synthetic, non-digestible sugar that is clinically used to treat constipation, as it exhibits laxative activity; it is also used to treat hepatic encephalopathy-induced hyperammonemia. Lactulose induces retention of water. Metabolites of lactulose have peristalsis-stimulating activity.



## Pricing and Availability

**Bulk quantities available upon request**

Product ID	Size	List Price
L0211	5 g	\$71.70
L0211	10 g	\$115.30
L0211	25 g	\$230.80

**References** Panesar PS, Kumari S. Lactulose: production, purification and potential applications. *Biotechnol Adv.* 2011 Nov-Dec;29(6):940-8. PMID: 21856402.

Shukla S, Shukla A, Mehboob S, et al. Meta-analysis: the effects of gut flora modulation using prebiotics, probiotics and synbiotics on minimal hepatic encephalopathy. *Aliment Pharmacol Ther.* 2011 Mar;33(6):662-71. PMID: 21251030.

**Caution:** This product is intended for laboratory and research use only. It is not for human or drug use.