



# LKT Laboratories, Inc.

## Alloxan Monohydrate

Phone: 888-558-5227  
651-644-8424  
Fax: 888-558-7329  
Email: [getinfo@lctlabs.com](mailto:getinfo@lctlabs.com)  
Web: [lctlabs.com](http://lctlabs.com)

### Product Information

Product ID A4547  
CAS No. 2244-11-3  
Chemical Name 2,4,5,6(1H,3H)-pyrimidinetetrone monohydrate

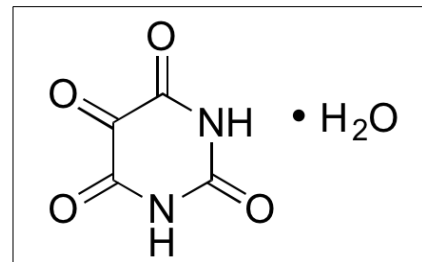
Synonym Alloxan

Formula  $C_4H_2N_2O_4 \cdot H_2O$   
Formula Wt. 160.08  
Melting Point  $255^\circ C$   
Purity  $\geq 98\%$   
Solubility Soluble in water.

Store Temp  $4^\circ C$

Ship Temp Ambient

Description Alloxan is an oxygenated pyrimidine and toxic analog of glucose. Alloxan destroys  $\beta$  cells and is used in research models to induce diabetes. This compound does not affect human cells.



### Pricing and Availability

*Bulk quantities available upon request*

Product ID	Size	List Price
A4547	5 g	\$37.40
A4547	10 g	\$63.50
A4547	25 g	\$131.00

**References** Franzén S, Friederich-Persson M, Fasching A, et al. Differences in susceptibility to develop parameters of diabetic nephropathy in four mouse strains with type 1 diabetes. *Am J Physiol Renal Physiol*. 2014 May 15;306(10):F1171-8. PMID: 24623147.

Tyrberg B, Andersson A, Borg LA. Species differences in susceptibility of transplanted and cultured pancreatic islets to the beta-cell toxin alloxan. *Gen Comp Endocrinol*. 2001 Jun;122(3):238-51. PMID: 11356036.

Eizirik DL, Pipeleers DG, Ling Z, et al. Major species differences between humans and rodents in the susceptibility to pancreatic beta-cell injury. *Proc Natl Acad Sci U S A*. 1994 Sep 27;91(20):9253-6. PMID: 7937750.

**Caution:** This product is intended for laboratory and research use only. It is not for human or drug use.