



LKT Laboratories, Inc.

Captopril

Phone: 888-558-5227
651-644-8424
Fax: 888-558-7329
Email: getinfo@lktlabs.com
Web: lktlabs.com

Product Information

Product ID C0261

CAS No. 62571-86-2

Chemical Name N-[(S)-3-Mercapto-2-methylpropionyl]-L-proline

Synonym (2S)-1-(3-Mercapto-2-methylpropionyl)-L-proline, Aceplus, Hypertil, Tensoprel

Formula C₉H₁₅NO₃S

Formula Wt. 217.29

Melting Point 104-108 °C

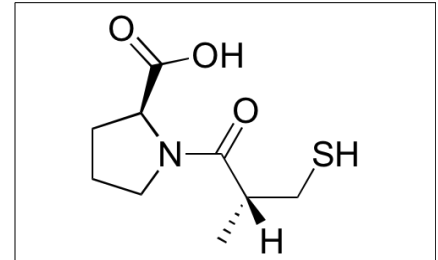
Purity ≥81%

Solubility Soluble in water or ethanol.

Store Temp Ambient

Ship Temp Ambient

Description Captopril is the first angiotensin-converting enzyme (ACE) inhibitor marketed; it is clinically used to treat hypertension, congestive heart failure (CHF), and diabetic nephropathy. Captopril exhibits antihypertensive, anti-metastatic, and anticancer chemotherapeutic activities. In animal models of lung cancer, captopril decreases tumor growth and metastasis and induces cellular apoptosis.



Pricing and Availability

Bulk quantities available upon request

Product ID	Size	List Price
C0261	1 g	\$44.80
C0261	5 g	\$82.70
C0261	25 g	\$248.10

References Zidane F, Zeder-Lutz G, Altschuh D, et al. Surface plasmon resonance analysis of the binding mechanism of pharmacological and peptidic inhibitors to human somatic angiotensin I-converting enzyme. *Biochemistry*. 2013 Dec 3;52(48):8722-31. PMID: 24168709.

Attoub S, Gaben AM, Al-Salam S, et al. Captopril as a potential inhibitor of lung tumor growth and metastasis. *Ann N Y Acad Sci*. 2008 Sep;1138:65-72. PMID: 18837885.

Caution: This product is intended for laboratory and research use only. It is not for human or drug use.