



LKT Laboratories, Inc.

## 7-epi-Taxol

Phone: 888-558-5227

651-644-8424

Fax: 888-558-7329

Email: [getinfo@lktlabs.com](mailto:getinfo@lktlabs.com)

Web: [lktlabs.com](http://lktlabs.com)

### Product Information

Product ID T0102

CAS No. 105454-04-4

**Chemical Name**

Synonym 7-Epipaclitaxel, 7-Epitaxol, 7-epi-Paclitaxel, Epitaxol

Formula C<sub>47</sub>H<sub>51</sub>NO<sub>14</sub>

Formula Wt. 853.91

**Melting Point**

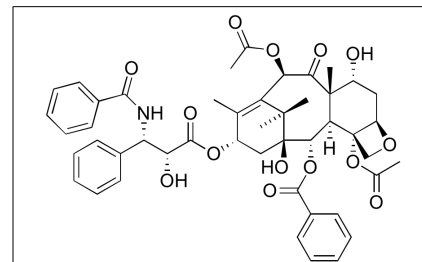
Purity ≥95%

Solubility Soluble in organic solvents.

Store Temp -20° C

Ship Temp Ambient

**Description** 7-epi-taxol has been found in *Taxus*. Like other taxanes, this compound may also promote microtubule polymerization and prevent microtubule depolymerization, exhibiting anticancer potential, although research is limited.



### Pricing and Availability

*Bulk quantities available upon request*

Product ID	Size	List Price
T0102	5 mg	\$428.10
T0102	10 mg	\$684.70
T0102	25 mg	\$1337.40

**References** Yu SS, Sun QW, Zhang XP, et al. Content and distribution of active components in cultivated and wild *Taxus chinensis* var. *mairei* plants. *Ying Yong Sheng Tai Xue Bao*. 2012 Oct;23(10):2641-7. PMID: 23359921.

Shen YC, Chen YJ, Chen CY. Taxane diterpenoids from the seeds of Chinese yew *Taxus chinensis*. *Phytochemistry*. 1999 Dec;52(8):1565-9. PMID: 10647221.

Slichenmyer WJ, Von Hoff DD. New natural products in cancer chemotherapy. *J Clin Pharmacol*. 1990 Sep;30(9):770-88. PMID: 1980498.

**Caution:** This product is intended for laboratory and research use only. It is not for human or drug use.