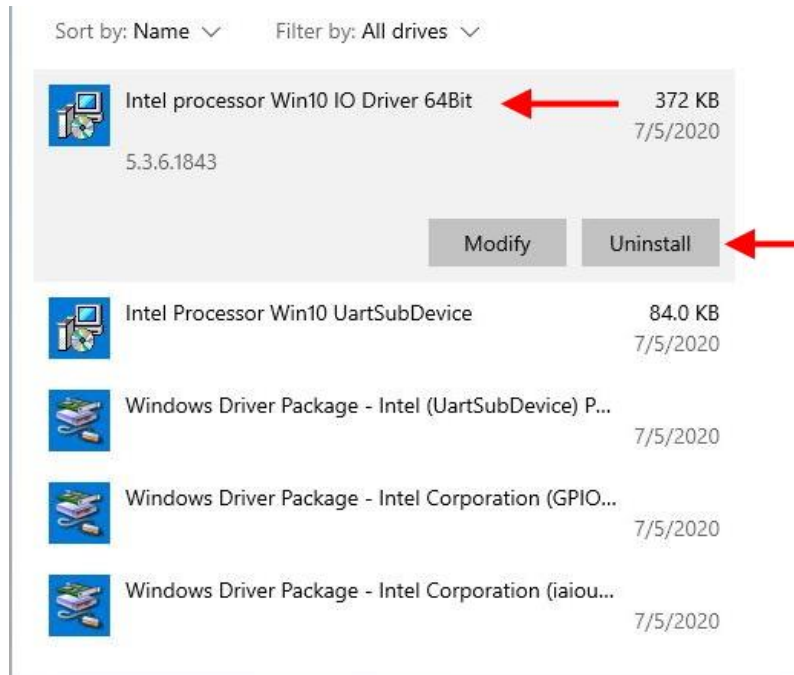
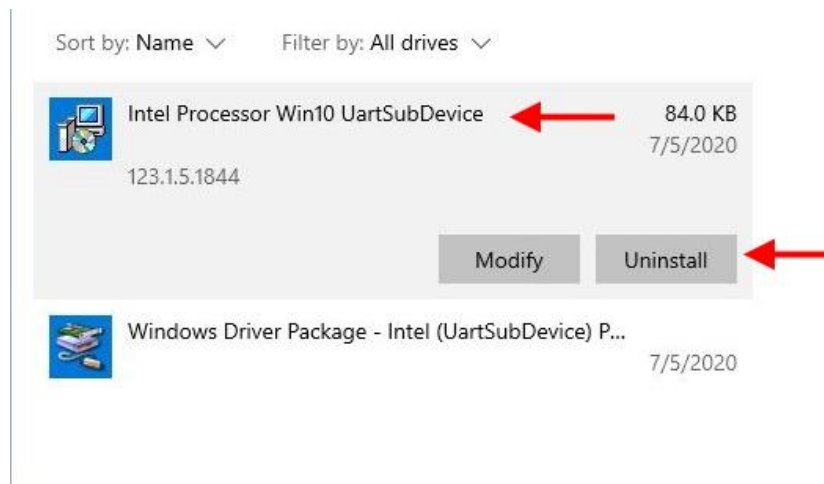


Fitlet2 Intel COM Port Driver Installation Guide

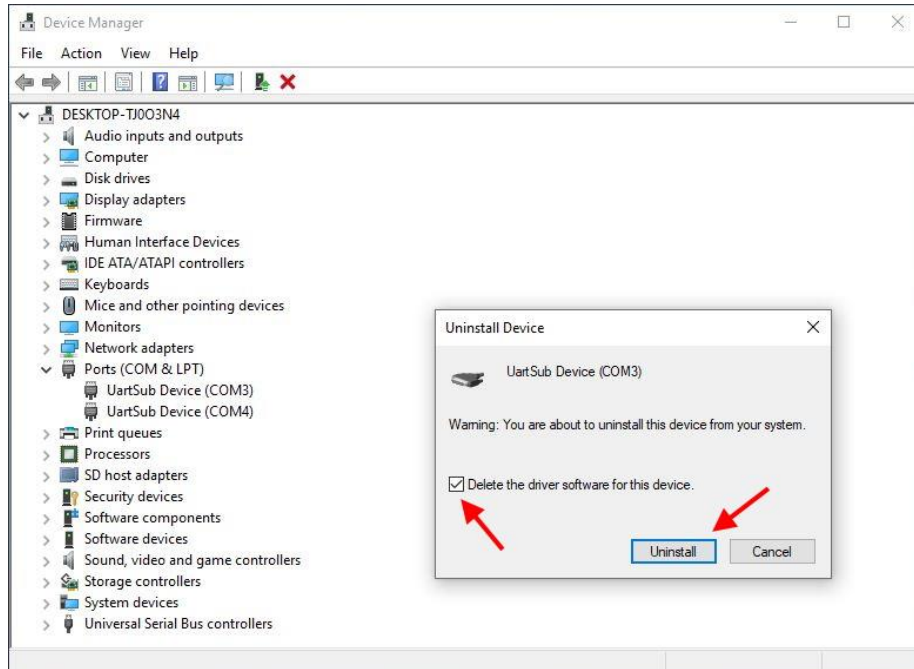
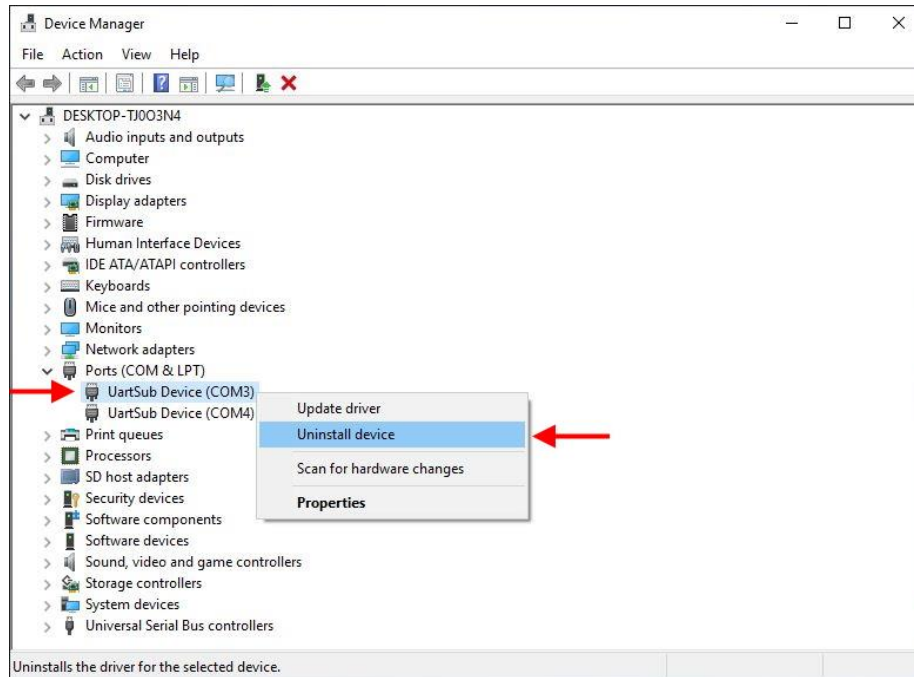
1. Open **Start | Settings | Apps** menu.
2. Uninstall the Intel Win10 IO Driver:



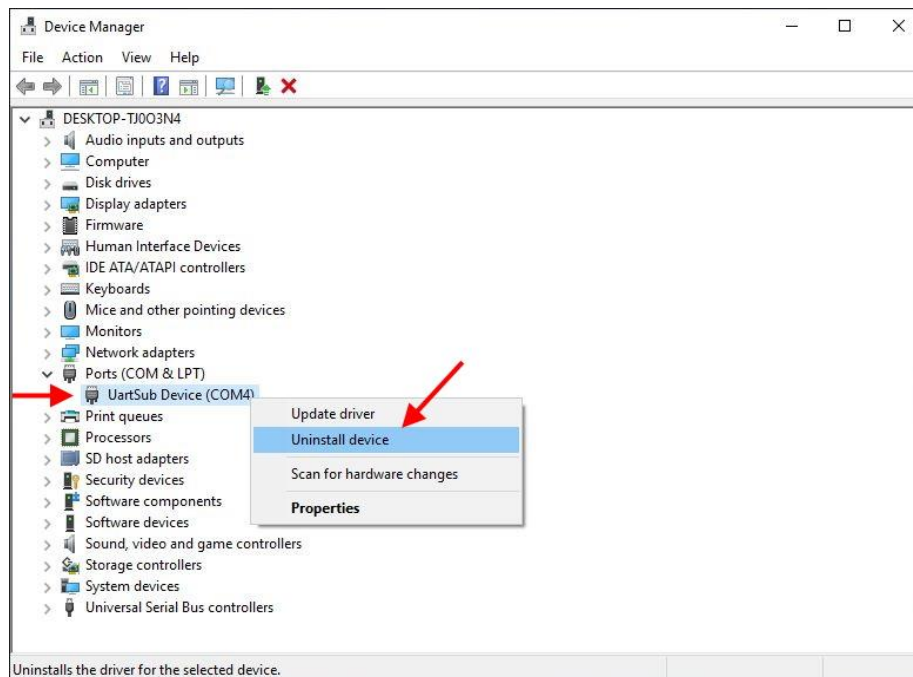
3. Reboot the system.
4. Open to the **Start | Settings | Apps** menu.
5. Uninstall the **Intel Win10 UartSubDevice** Driver:



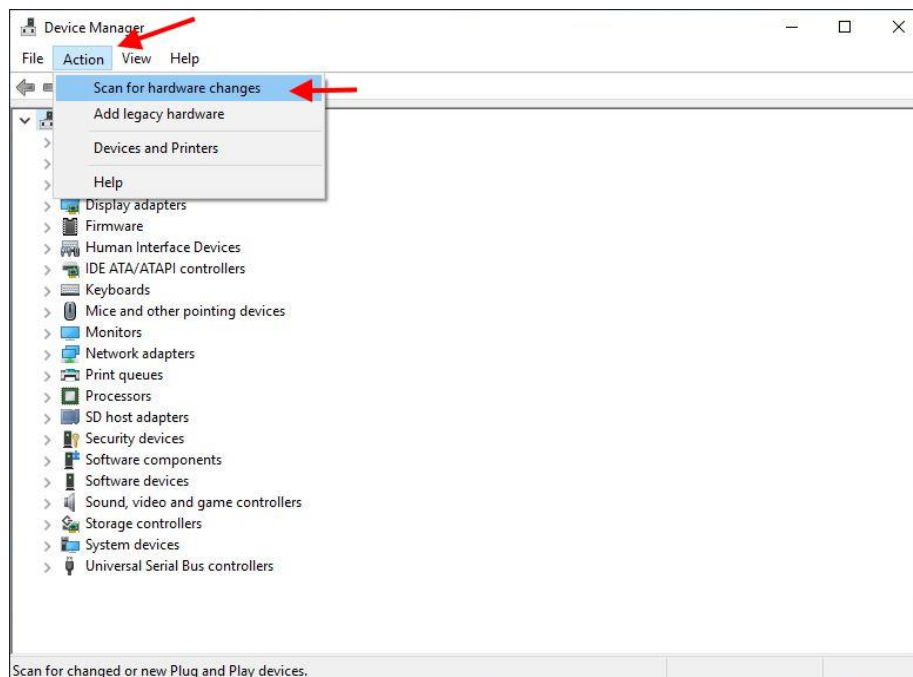
6. Reboot the system.
7. Right click on Start button and choose the **Device manager**.
8. Open the **Ports (COM & LPT)** section.
9. Uninstall the first **UartSub** Device's driver:



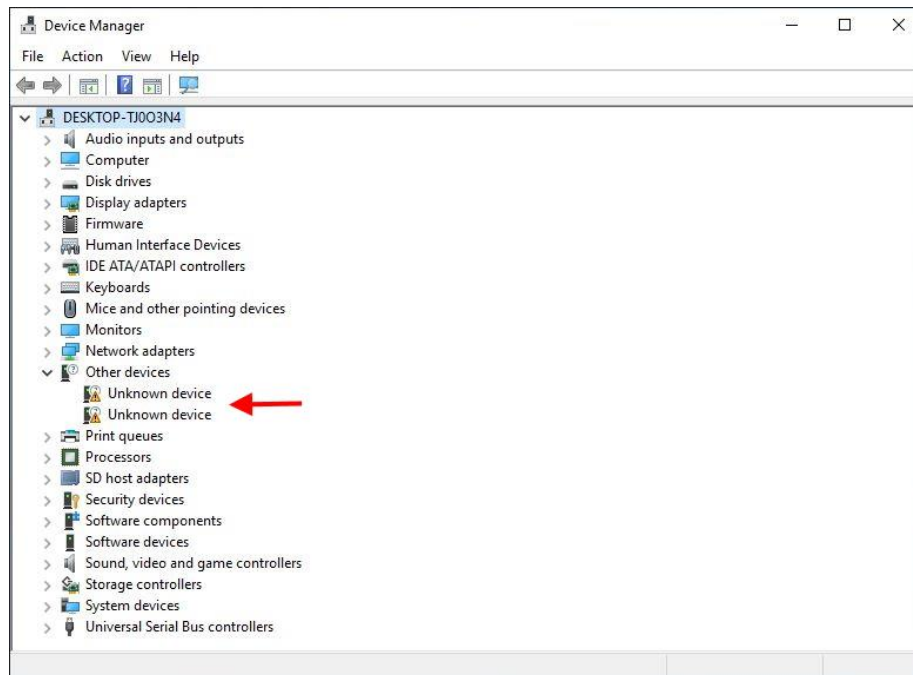
10. Uninstall the second UartSub Device's driver:



11. Perform scan for hardware changes:



12. The scanning result:



13. Download the drivers file (MD5: **989e7dadf85c12efaaca782c203305e6**) from:

[http://fit-](http://fit-iot.com/files/download/fitlet2/sw/drivers/win10/fitlet2_Win10_COM_Port_DevVersion.zip)

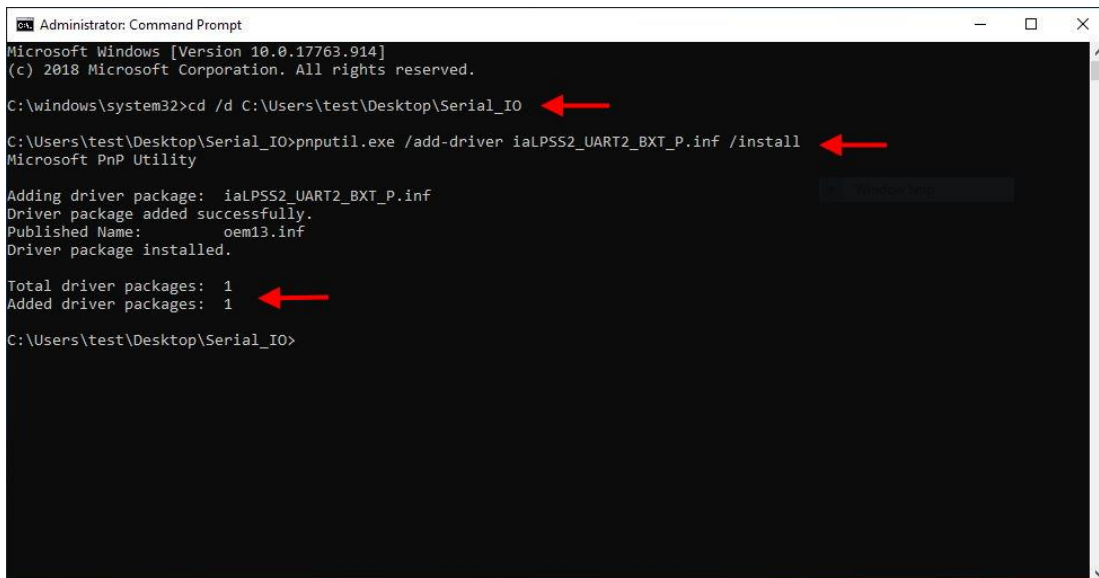
[iot.com/files/download/fitlet2/sw/drivers/win10/fitlet2_Win10_COM_Port_DevVersion.zip](http://fit-iot.com/files/download/fitlet2/sw/drivers/win10/fitlet2_Win10_COM_Port_DevVersion.zip)

14. Unzip it to your Desktop. You should see two folders - **Serial_IO** and **Uart_Sub_Device**

15. Open the **CMD** in the **Administrator** mode (click on search icon, type CMD, right click on the Command Prompt App appearing at the top and choose "Run as Administrator") .

16. Browse to the **Serial_IO** folder.

17. Run the command: **pnputil.exe /add-driver iaLPSS2_UART2_BXT_P.inf /install**

A screenshot of the 'Administrator: Command Prompt' window. The text in the window is as follows:

```
Microsoft Windows [Version 10.0.17763.914]
(c) 2018 Microsoft Corporation. All rights reserved.

C:\windows\system32>cd /d C:\Users\test\Desktop\Serial_IO
C:\Users\test\Desktop\Serial_IO>pnputil.exe /add-driver iaLPSS2_UART2_BXT_P.inf /install
Microsoft PnP Utility

Adding driver package: iaLPSS2_UART2_BXT_P.inf
Driver package added successfully.
Published Name: oem13.inf
Driver package installed.

Total driver packages: 1
Added driver packages: 1
C:\Users\test\Desktop\Serial_IO>
```

Red arrows point to the directory path, the command, and the 'Added driver packages: 1' line.

18. Reboot the system.

19. Browse to the **Uart_Sub_Device** folder.

20. Run the command: **pnputil.exe /add-driver UartSubDevice.inf /install**

```
Administrator: Command Prompt
Microsoft Windows [Version 10.0.17763.914]
(c) 2018 Microsoft Corporation. All rights reserved.

C:\windows\system32>cd /d C:\Users\test\Desktop\Uart_Sub_Device
C:\Users\test\Desktop\Uart_Sub_Device>pnputil.exe /add-driver UartSubDevice.inf /install
Microsoft PnP Utility

Adding driver package: UartSubDevice.inf
Driver package added successfully.
Published Name:      oem15.inf
Driver package installed.

Total driver packages: 1
Added driver packages: 1

C:\Users\test\Desktop\Uart_Sub_Device>
```

21. Reboot the system.

Fitlet2 page

<https://fit-iot.com/web/products/fitlet2/>

Further information

<https://fit-pc.com/wiki/index.php?title=Fitlet2>

Technical support:

Email: support@fit-pc.com

Phone: +972-4 829 0134