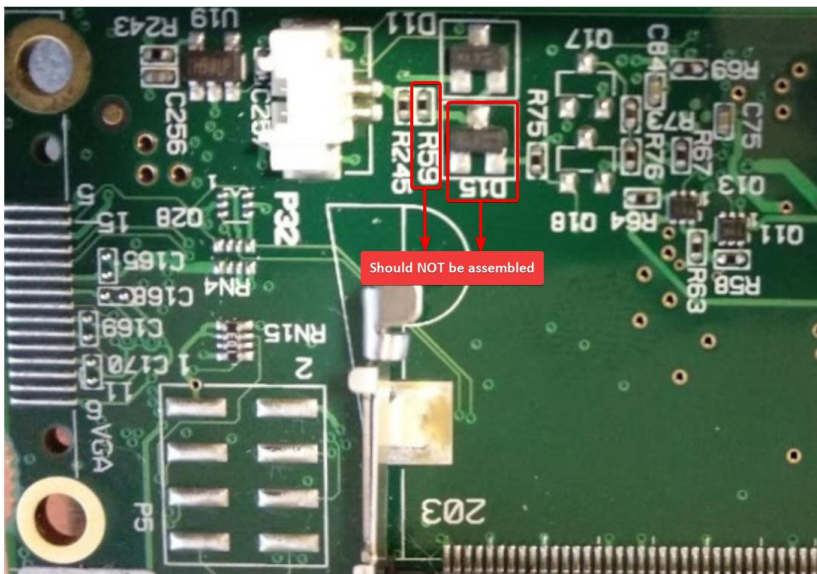


21-Nov-18

Fit-pc4 battery replacement guide

- This document instructs to replace an RTC backup battery on the fit-pc4 model
- This document is derived from the Errata note - http://fit-pc.com/wiki/index.php/Fit-PC4_RTC_Battery_Erratum
- It applies to models that has detachable non-rechargeable battery board design.
 - To determine, please check that **D15** and **R59** parts, below the RAM socket, were **removed**, see illustration below :



Instructions



Place your FIT-PC4 upside down, so you can easily access service door



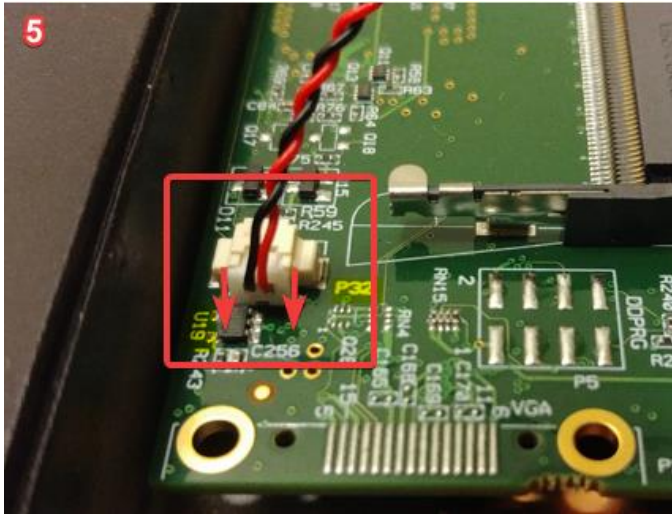
Remove the service door from FIT-PC4.



Remove four Philips screws at the FIT-PC4 corners and carefully detach the back panel.



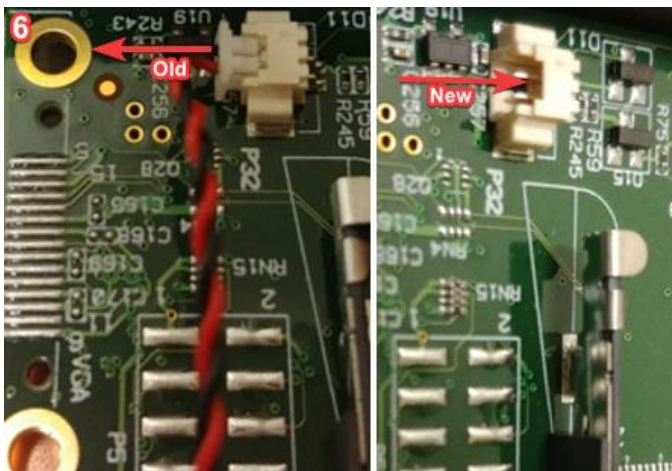
Remove the face module's Philips screw, and detach the face module by lifting it up



Now you have easy access to the RTC backup battery, attached to the P32 connector.

To remove the battery, you need slightly to lift up the battery plug attached to the P32 connector and pull away the plug from the P32 connector.

Please use extra care, not to damage U19 IC located between P32 and battery connector.



Insert the replacement battery into P32 connector

Assemble back the face module, the back panel and the service door, performing in the reverse order steps 1 to 4.