

Deploying the Syncfusion Assemblies along with an ASP.NET WebSite

Deploying ASP.NET applications created with Syncfusion components can be done by just deploying the bin folder of the ASP.NET application to the deployment server. The following steps will explain how this can be done with the help of a Websetup project that comes as a project type with Visual Studio.

Note:

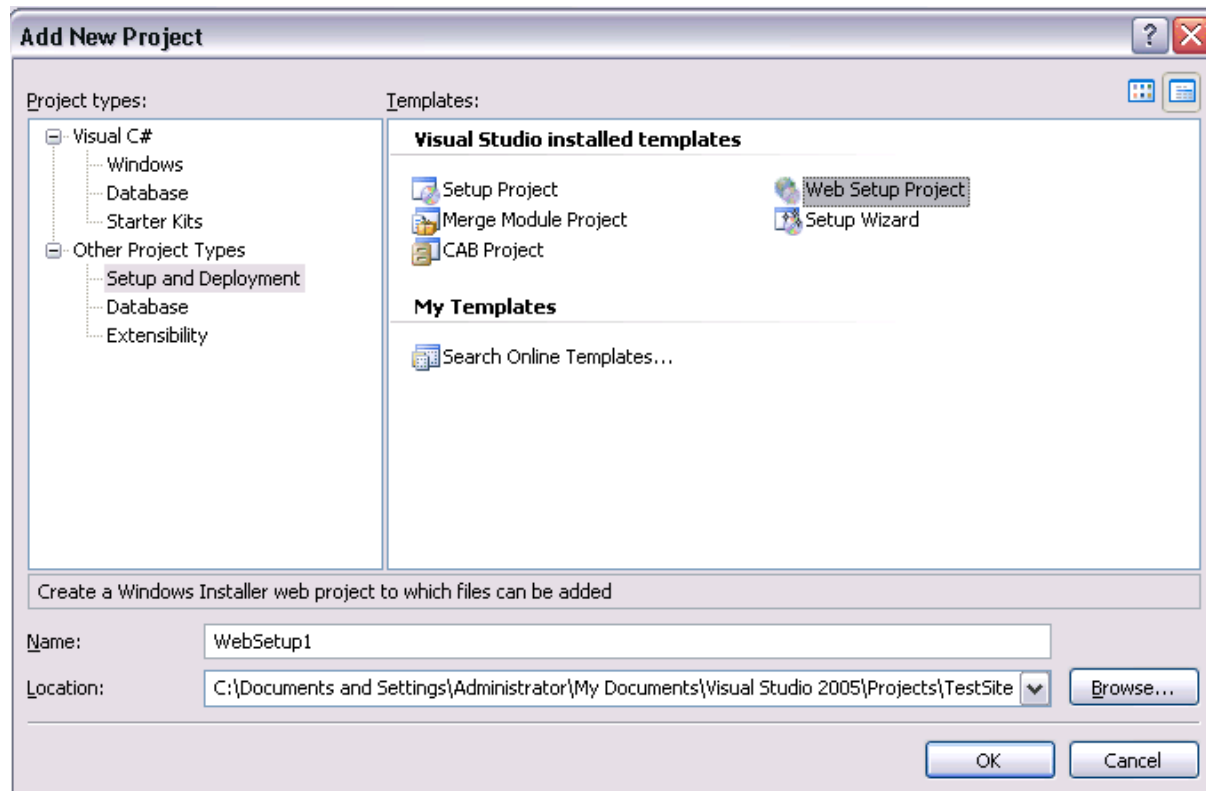
From Essential Studio v7.2.0.37, deployment of Syncfusion applications requires an additional licensecontext.slf file to be shipped, which will be automatically created in your development machine in the application directory. This licensecontext.slf file includes your developer licensing information, which helps your application to get validated for runtime licensing at deployed user/server end.

Step1:

Right click on the Solution file in the Solution Explorer and then in the Add New item, select Add a New Project.

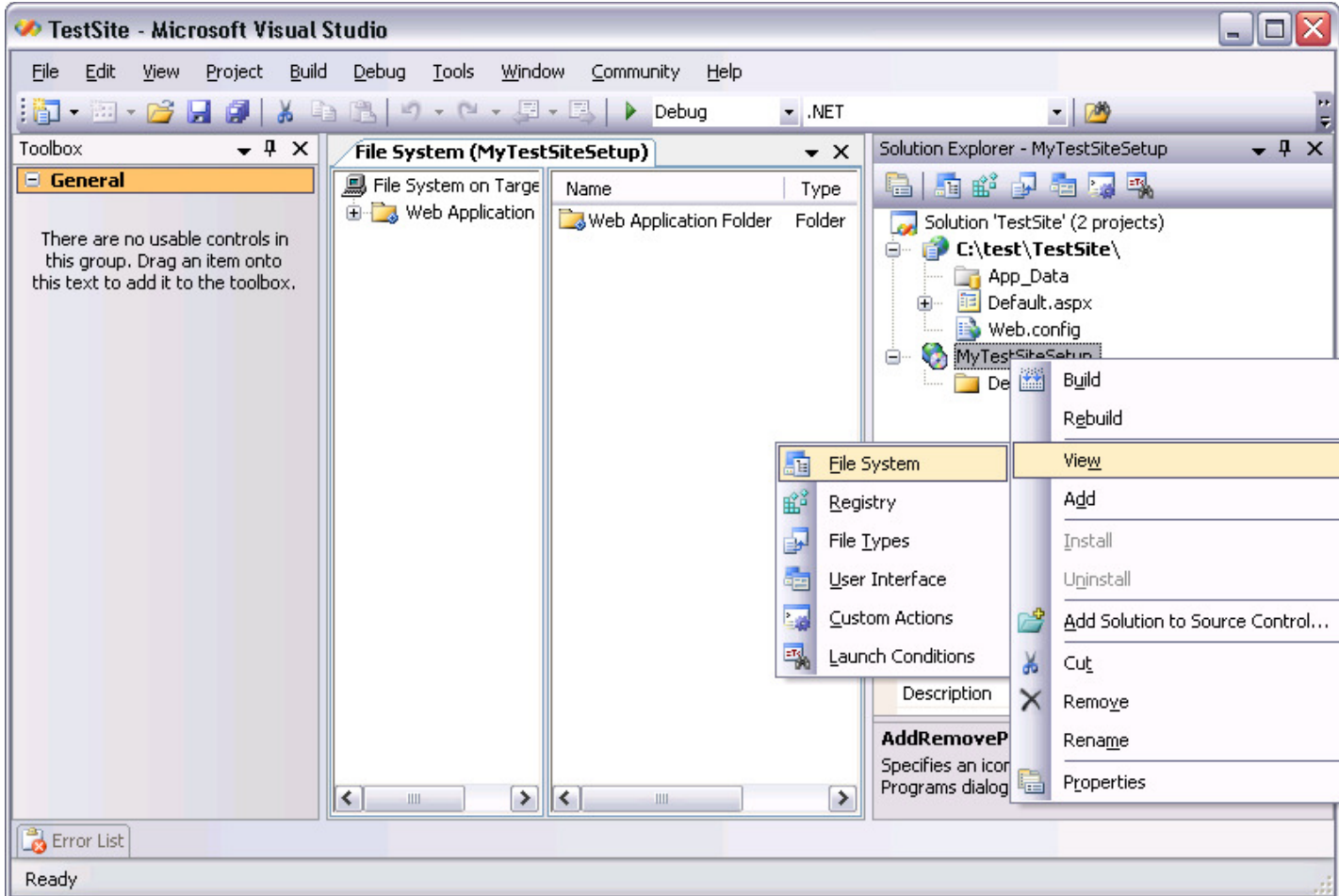
Step2:

In the projects template of the VisualStudio, in the 'Other projects' template, select Web Setup project.

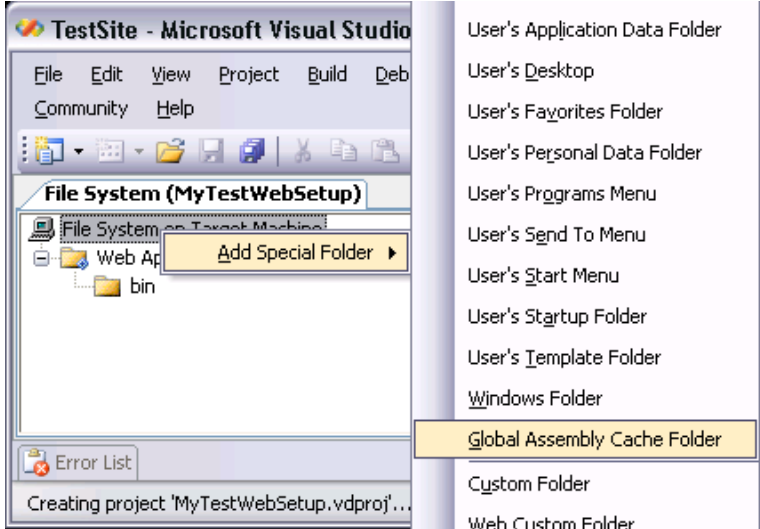


Step3:

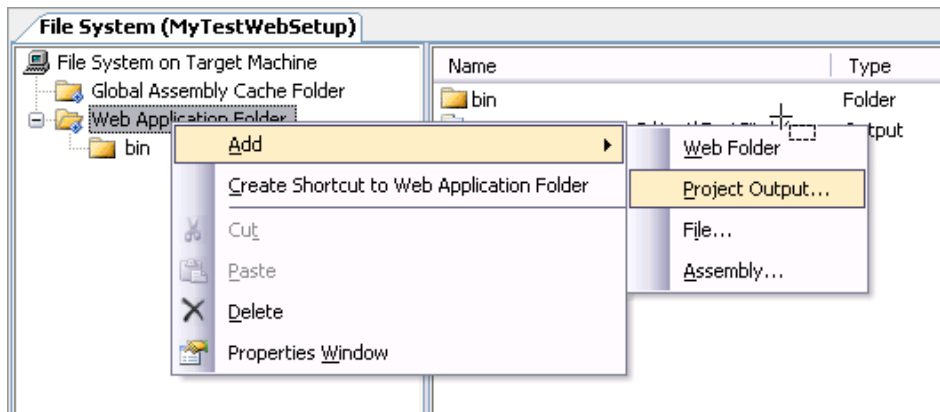
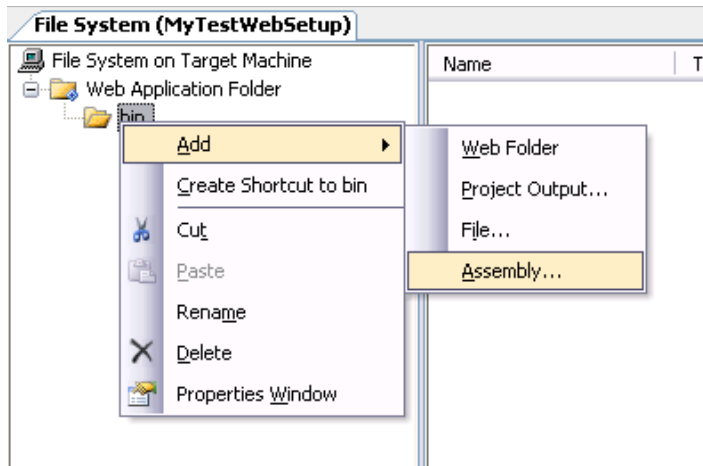
In that WebSetupProject, right click on the project, View --> FileSystem. The FileSystem is where you mention the files to be deployed when using this setup project in the client machine.



Step4:
In the FileSystem, create the GAC folder, project output folder as shown in the images attached.



Step5:
Add the assemblies to the bin folder and the GAC folder as shown below.

**Note:**

Including assemblies to the GAC is an optional step which helps users who are trying to work with full trust environment and also to users who are deploying more than one application to the same server that uses Syncfusion components. Also ensure that the licensecontext.sif is moved near the .aspx file in the deployment machine.

Step6:

Build the project. You will get a .msi file and a .exe file in the output folder of the WebSetupProject.

Step7:

Now installing the .msi file in the client system will install all the dlls you need to install in the user's machine along with the project files to the Target machine.