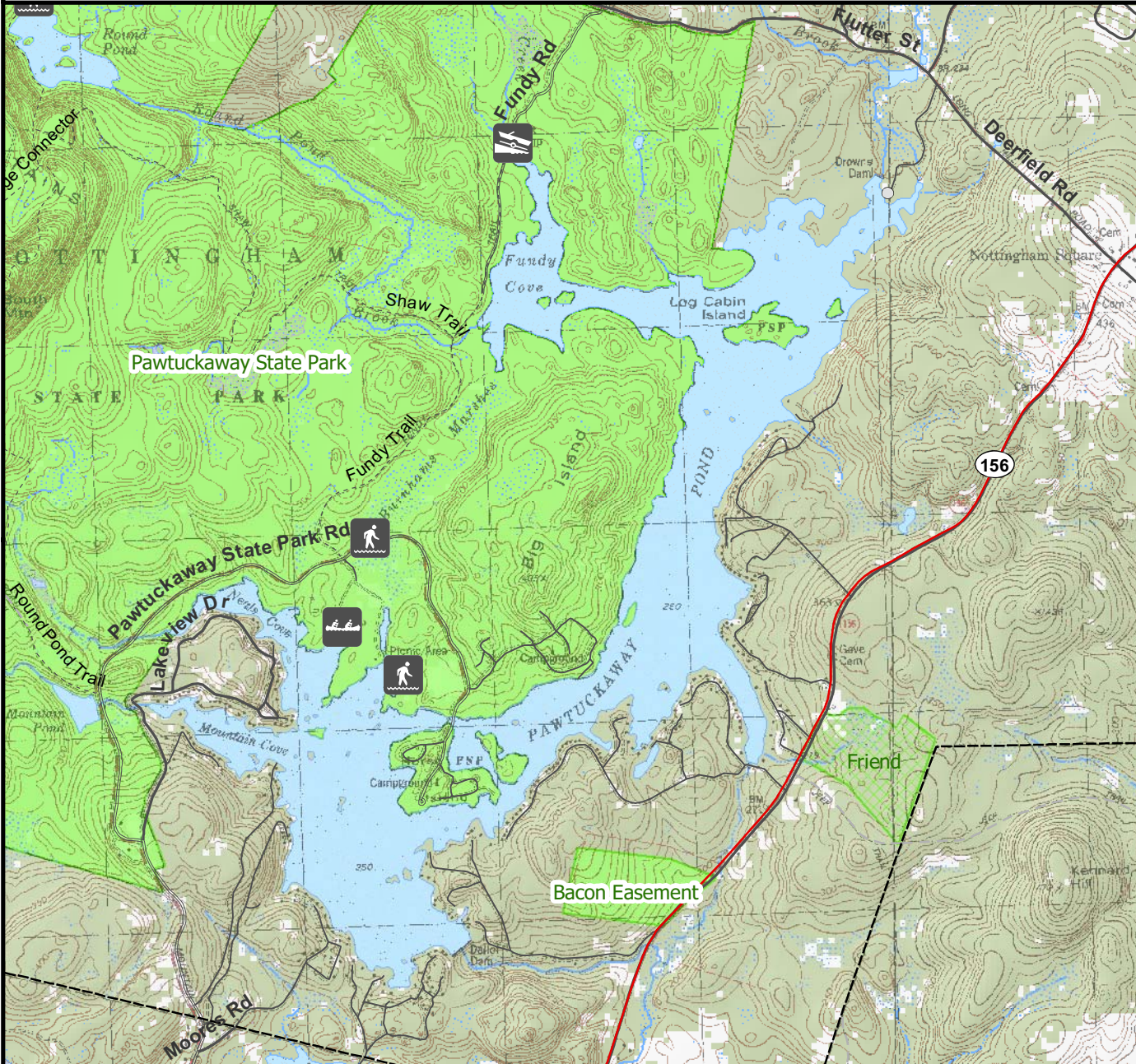


For regulation information, please refer to the NHFGD Freshwater Fishing Digest.

Contact: NHFGD Inland Fisheries Division, Concord
E-mail: fish@wildlife.nh.gov Phone: 603-271-2501

PAWTUCKAWAY LAKE Nottingham



FISHERY: Warmwater	ACRES: 784
TROPHIC LEVEL: MESO	
AVG DEPTH: 10	MAX DEPTH: 50
SPECIES: SMB,LMB,ECP,HP,WP,BC	

ADDITIONAL INFO: 6 MPH in Fundy Cove; Shallow channel when low water

ACCESS: Pawtuckaway Lake Boat Ramp (Fundy Cove)

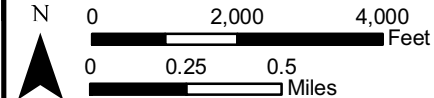
Contact NH Dept of Safety, Marine Patrol Bureau for information regarding waterbody restrictions (603) 293-0091

Public Water Access site (State, Federal, or Road-to-Public-Water)

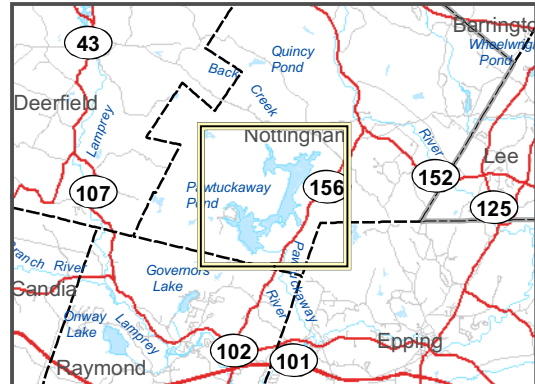
- Canoe/cartop
- Shorebank
- Ramp

Bathymetry provided by the NH Department of Environmental Services, Watershed Mgt Bureau

- Town boundary
 - Primary Route
 - Road or Street
 - Trail or other
 - Stream or Shoreline
 - Surface Water
 - Wetland
 - Conservation Land
 - Cleared
 - Forest
 - Contour
 - Building
 - Restricted Access Conservation
- Source: USGS



Most data presented on this map represent stock data sets obtained from NH GRANIT, Complex Systems Research Center, UNH. CSRC, NHOEP, NHFGD and the cooperating agencies make no claim as to the validity or reliability or to any implied uses of these data. NOT FOR NAVIGATION.

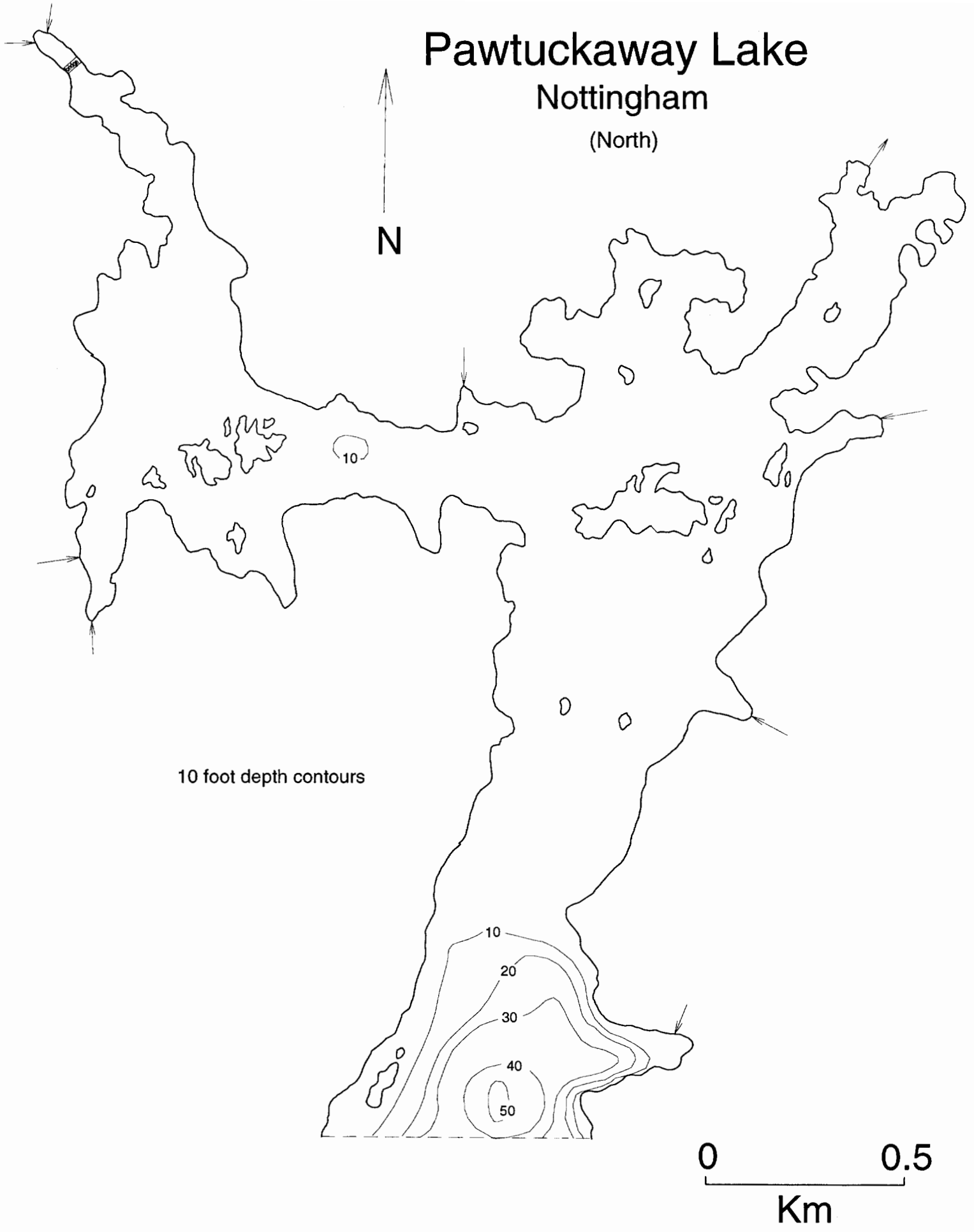


Directions: Fundy Rd

Pawtuckaway Lake

Nottingham

(North)



Pawtuckaway Lake Nottingham (South)

