

For fishing regulation information, please refer to the NHFGD Freshwater Fishing Digest.

Contact: NHFGD Inland Fisheries Division, Concord
E-mail: fish@wildlife.nh.gov Phone: 603-271-2501

WILD GOOSE POND Pittsfield

FISHERY: Warmwater **ACRES:** 118

TROPIC LEVEL: MESO

AVG. DEPTH: 14 **MAX. DEPTH:** 20


SPECIES: LMB,ECP,BBH,BG


ADDITIONAL INFO:

ACCESS: No public boat access

Please contact NH Dept of Safety, Marine Patrol for info. on water body/boat/motor restrictions: (603) 293-2037 www.nhmarinepatrol.com

Public Water Access site

 Canoe/cartop


 Shorebank


 Ramp

 Bathymetric contour (feet)


Bathymetry provided by the NH Department of Environmental Services, Watershed Mgt Bureau


 Town boundary

 Primary Route

 Road or Street

 Trail or other

 Stream or Shoreline

 Surface Water

 Wetland


 Conservation or Public land

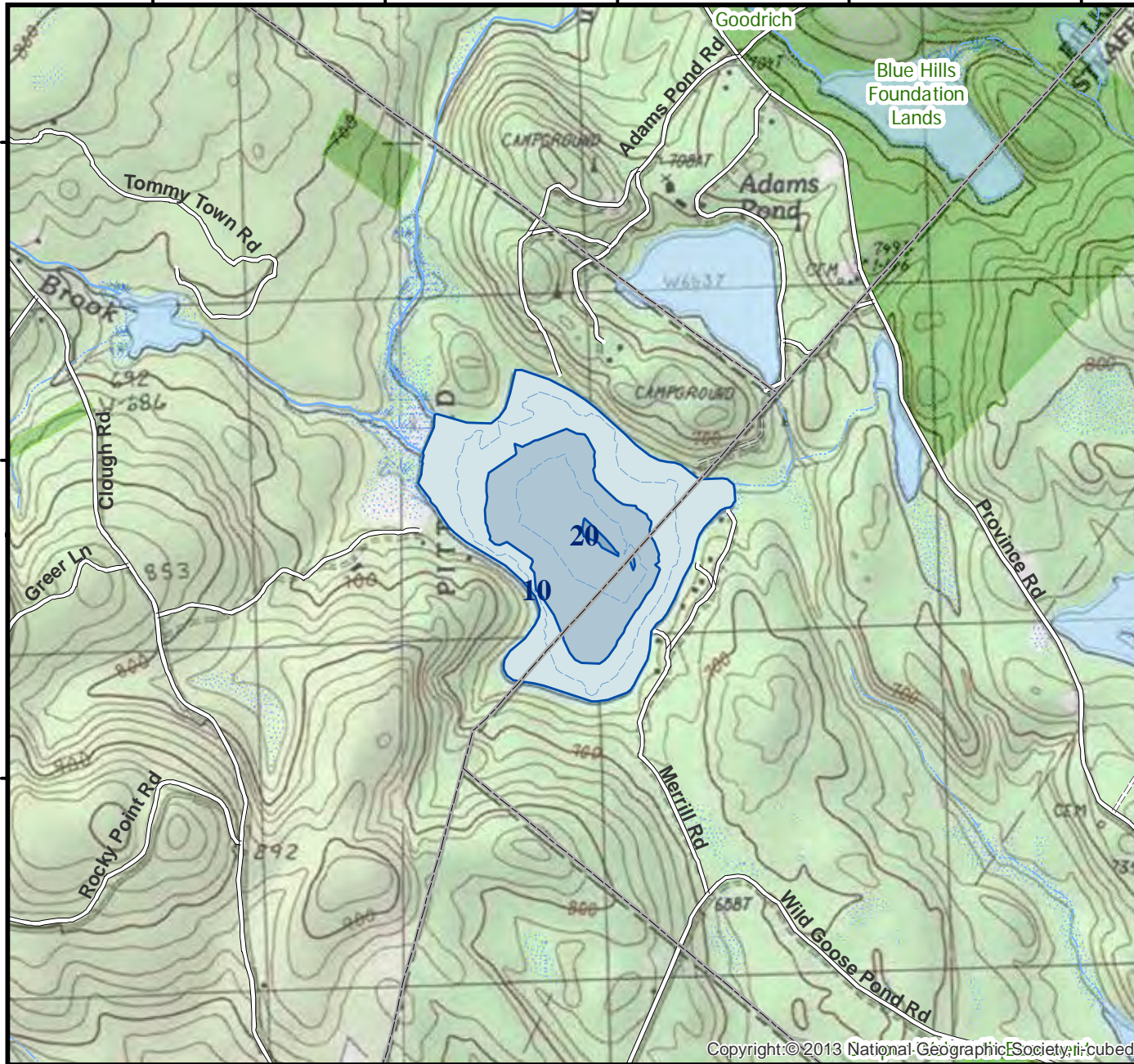
 Cleared Forest

 Contour

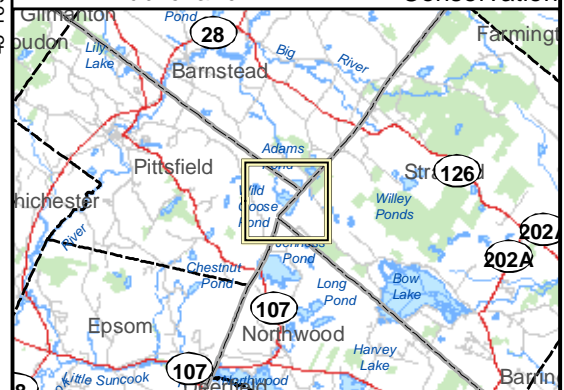
 Building

Source: USGS

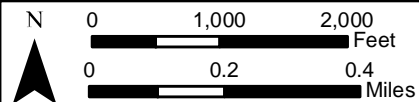
 Restricted Access Conservation



Copyright:©2013 National Geographic Society, i-cubed



Directions:



Most data presented on this map represent stock data sets obtained from NH GRANIT, Complex Systems Research Center, UNH. CSRC, NHOEP, NHFGD and the cooperating agencies make no claim as to the validity or reliability or to any implied uses of these data. NOT FOR NAVIGATION.