

For fishing regulation information, please refer to the NHFGD Freshwater Fishing Digest.

Contact: NHFGD Region 2 (Lakes Region), New Hampton  
E-mail: [reg2@wildlife.nh.gov](mailto:reg2@wildlife.nh.gov) Phone: 603-744-5470

# LAKE WAUKEWAN Meredith, New Hampton

FISHERY: Cold/Warm ACRES: 928

TROPIC LEVEL: OLIGO

AVG. DEPTH: 0 MAX. DEPTH: 0

SPECIES: RT,SMB,ECP,HP,WP

ADDITIONAL INFO: fishing restriction

ACCESS: town ramp, restrictions near intake

Please contact NH Dept of Safety, Marine Patrol for info. on water body/boat/motor restrictions: (603) 293-2037 [www.nhmarinepatrol.com](http://www.nhmarinepatrol.com)

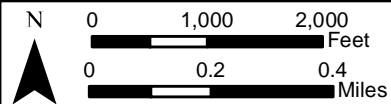
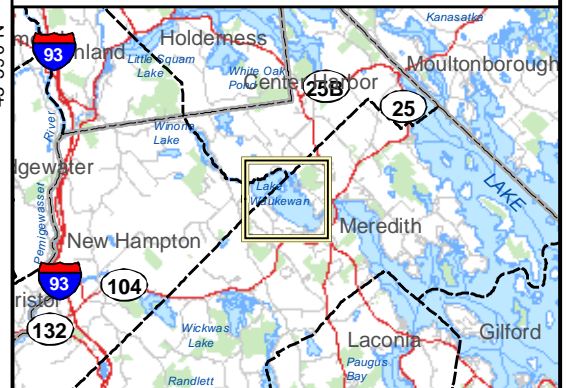
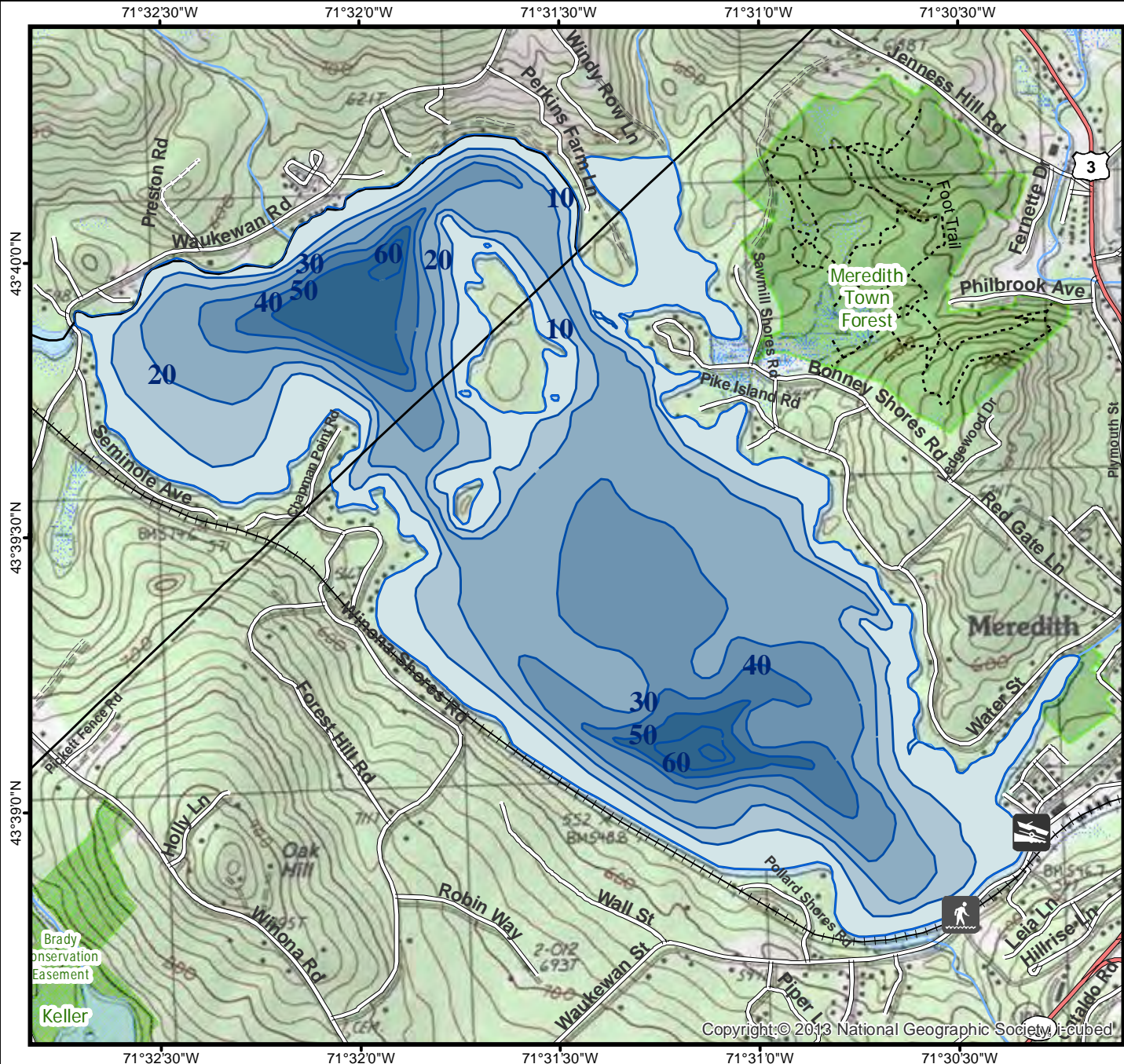
### Public Water Access site

- Canoe/cartop
- Shorebank
- Ramp

Bathymetric contour (feet)

Bathymetry provided by the NH Department of Environmental Services, Watershed Mgt Bureau

- Town boundary
  - Primary Route
  - Road or Street
  - Trail or other
  - Stream or Shoreline
  - Surface Water
  - Wetland
  - Conservation or Public land
  - Cleared Forest
  - Contour
  - Building
  - Restricted Access Conservation
- Source: USGS



Most data presented on this map represent stock data sets obtained from NH GRANIT, Complex Systems Research Center, UNH. CSRC, NHOEP, NHFGD and the cooperating agencies make no claim as to the validity or reliability or to any implied uses of these data. NOT FOR NAVIGATION.

Directions: Waukewan St