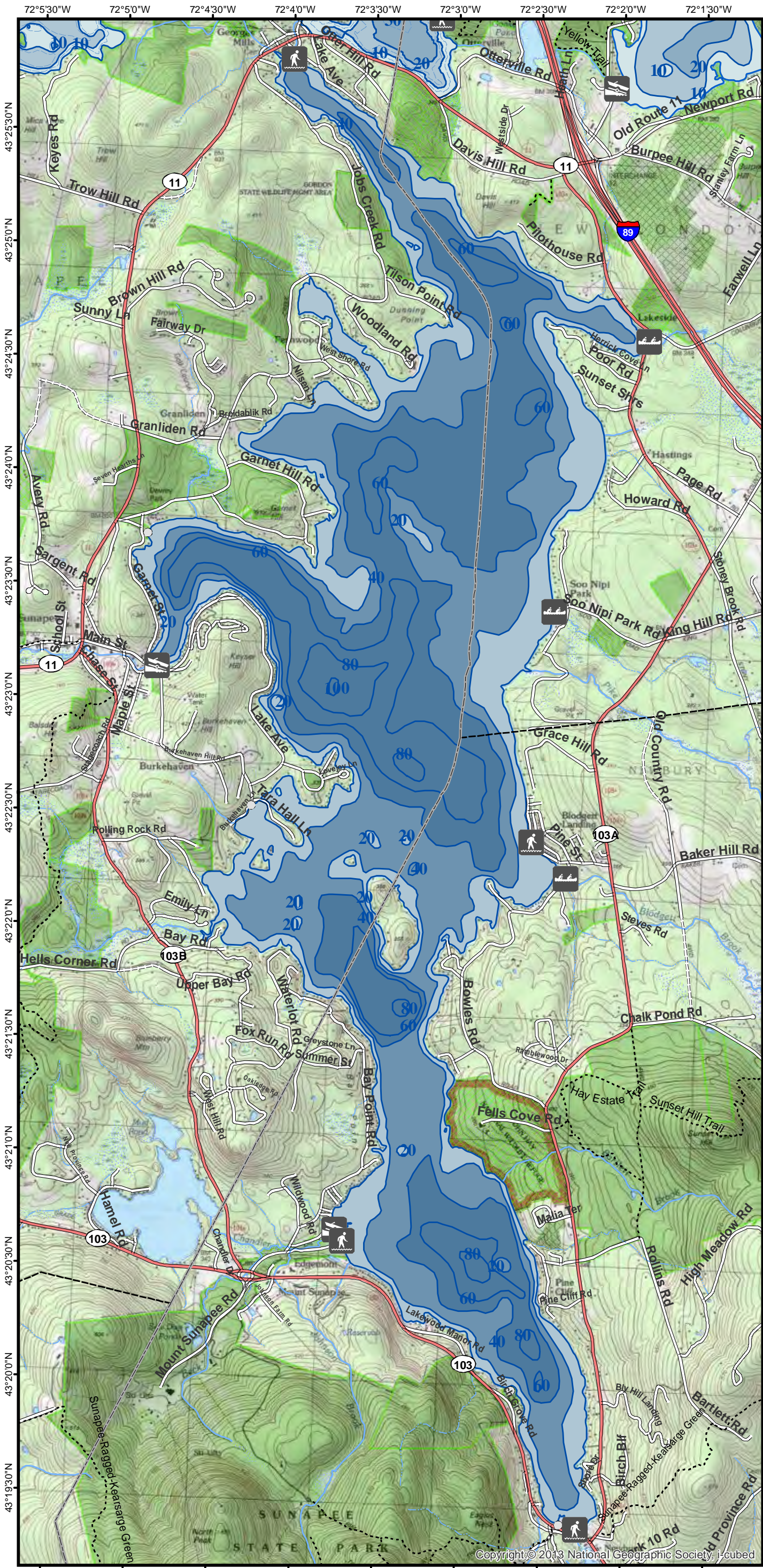


For fishing regulation information, please refer to the NHFGD Freshwater Fishing Digest.

Contact: NHFGD Region 2 (Lakes Region), New Hampton
E-mail: reg2@wildlife.nh.gov Phone: 603-744-5470

SUNAPEE LAKE
Sunapee, Newbury, New London

FISHERY: Cold/Warm	ACRES: 4,125
TROPHIC LEVEL:	
AVG. DEPTH: 37	MAX. DEPTH: 105
SPECIES: LLS,LT,LMB,SMB,ECP,HP	
ADDITIONAL INFO: lake trout and/or salmon lake; boat/other restrictions	
ACCESS: Sunapee State Park; Sunapee Harbor; other sites	
Please contact NH Dept of Safety, Marine Patrol for info. on water body/boat/motor restrictions: (603) 293-2037 www.nhmarinepatrol.com	

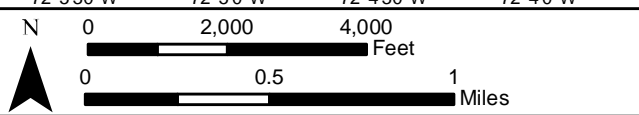
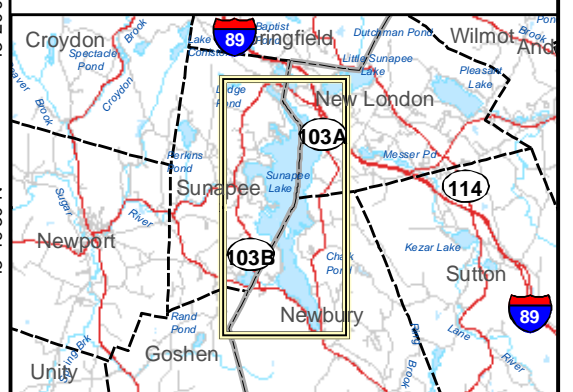


Public Water Access site

- Canoe/cartop
- Shorebank
- Ramp
- Bathymetric contour (feet)

Bathymetry provided by the NH Department of Environmental Services, Watershed Mgt Bureau

Town boundary	Cleared Forest
Primary Route	Contour
Road or Street	Building
Trail or other	Source: USGS
Stream or Shoreline	Surface Water
Wetland	Conservation or Public land
Restricted Access Conservation	



Most data presented on this map represent stock data sets obtained from NH GRANIT, Complex Systems Research Center, UNH. CSRC, NHOEP, NHFGD and the cooperating agencies make no claim as to the validity or reliability or to any implied uses of these data. NOT FOR NAVIGATION.

Directions: off Rt 103 traffic circle