

For fishing regulation information, please refer to the NHFGD Freshwater Fishing Digest. Contact: NHFGD Region 2 (Lakes Region), New Hampton
 E-mail: reg2@wildlife.nh.gov Phone: 603-744-5470

CONWAY LAKE Conway, Eaton

FISHERY: Warmwater **ACRES:** 1,316

TROPIC LEVEL: MESO

AVG. DEPTH: 15 **MAX. DEPTH:** 45

SPECIES: RT, LLS, SMB, LMB, ECP, HP

ADDITIONAL INFO: lake trout and/or salmon lake

ACCESS: Ramp, park across Mill St; or Potter Rd (limited)

Please contact NH Dept of Safety, Marine Patrol for info. on water body/boat/motor restrictions: (603) 293-2037 www.nhmarinepatrol.com

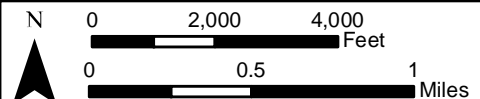
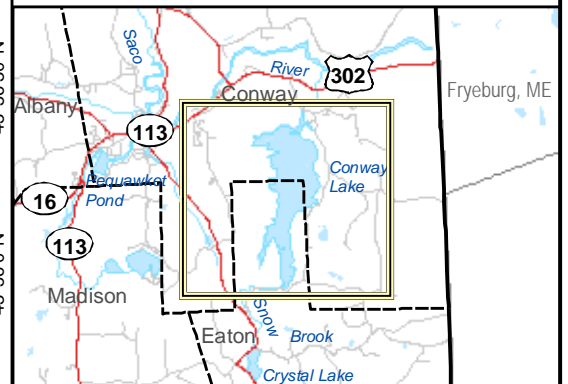
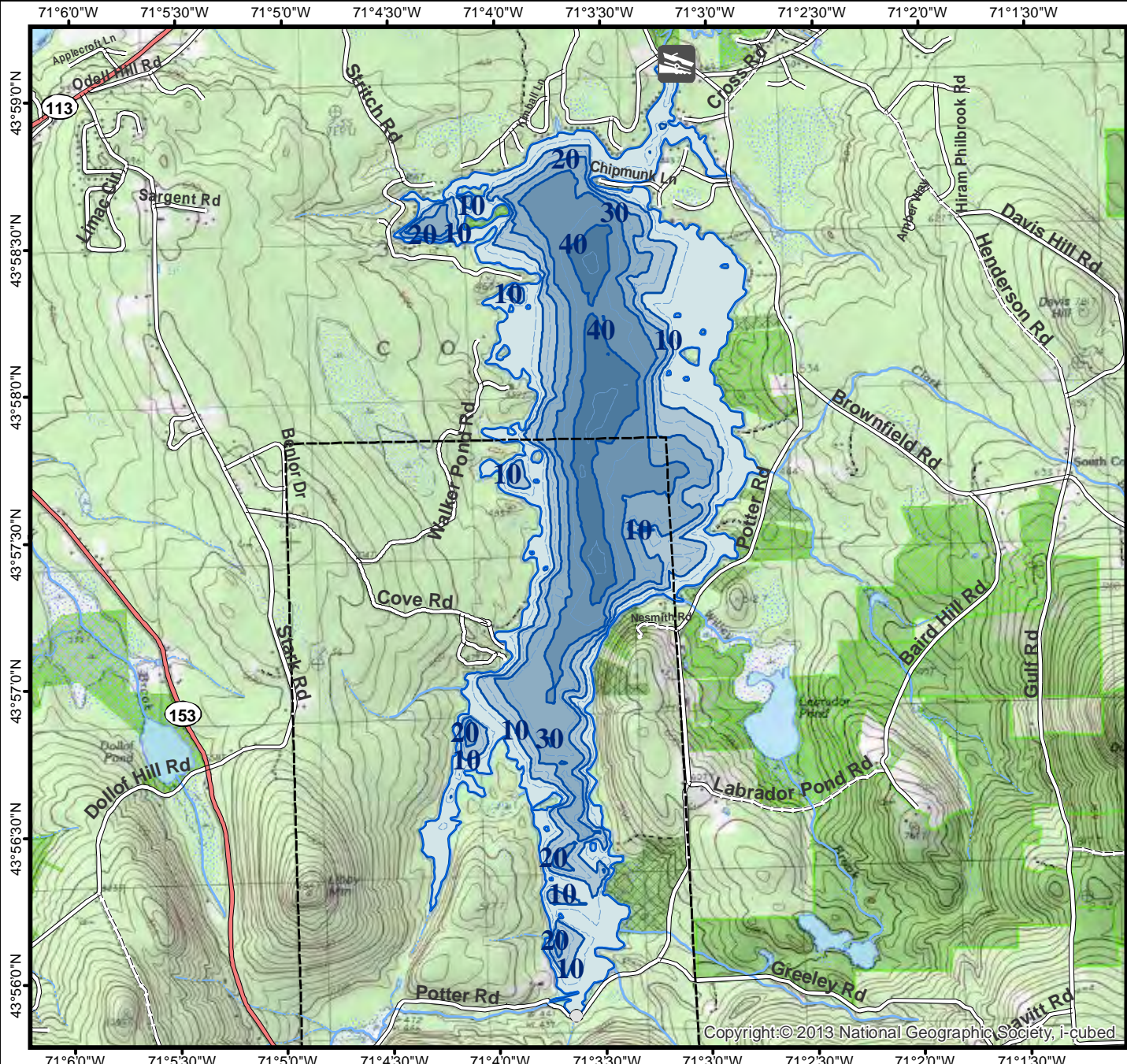
Public Water Access site

- Canoe/cartop
- Shorebank
- Ramp

Bathymetric contour (feet)

Bathymetry provided by the NH Department of Environmental Services, Watershed Mgt Bureau

- Town boundary
 - Primary Route
 - Road or Street
 - Trail or other
 - Stream or Shoreline
 - Surface Water
 - Wetland
 - Conservation or Public land
 - Cleared
 - Forest
 - Contour
 - Building
 - Restricted Access Conservation
- Source: USGS



Most data presented on this map represent stock data sets obtained from NH GRANIT, Complex Systems Research Center, UNH. CSRC, NHOEP, NHFGD and the cooperating agencies make no claim as to the validity or reliability or to any implied uses of these data. NOT FOR NAVIGATION.

Directions: Mill St