



6 EVIAN COURT

Custom-Built Tudor Style • The Thoms Estate



MOSAIC
COMMUNITY LIFESTYLE REALTY

4 Bedrooms, 2.5 Bathrooms
4,567 Square Feet • 0.51 Acres
MLS# 3431848

INFO

6 Evian Court, Asheville, NC 28804

4 Bedrooms, 2.5 Bathrooms

4,567 Square Feet, 0.51 Acres

- First Floor: 2,896 square feet
- Second Floor: 1,671 square feet
- Screened Patio: 562 square feet
- Garage: 742 square feet

MLS #3431848

FEATURES

- Exquisite custom-built Tudor style home in stunning gated-community of The Thoms Estate
- Fabulous North Asheville location near Country Club of Asheville, Downtown Asheville and Blue Ridge Parkway
- Located on a double lot with mountain views on a quiet and peaceful cul-de-sac
- Expertly constructed by Carlton Edwards Construction
- Gorgeous design by Samsel Architects
- Slate stone path leads to covered front porch
- Bright foyer with coat closet opens to expansive dining and living room
- Open floor plan with spacious rooms and 10' ceilings
- Living room has a modern tiled gas fireplace and an alcove suited for a baby grand piano



Bright Foyer

- Dining room with beautiful modern light fixtures and room for a large table
- Gourmet kitchen with granite countertops, honeycomb tile backsplash and walk-in pantry
- High-end stainless steel appliances includes Sub-Zero refrigerator, Wolf gas range and double oven, and Bosch dishwasher
- Kitchen island with breakfast bar and catering sink
- Custom soft-close cabinets with slide-out shelving



- Perfect for entertaining with an amazing stone tiled outdoor screened patio including a double-sided fireplace accessible from multiple rooms in the home
- Oversized windows for great natural light
- Wide-plank oak floors and crown molding throughout main level
- Spacious master suite with double walk-in closets, crown molding, and ceiling fan
- Master bathroom with double granite vanity, soft-close cabinets, and walk-in tiled shower
- Large private office off of master suite
- Half bathroom on main level has granite countertops and modern fixtures
- Grand staircase with wrought iron railings
- Second level with three bedrooms and a large full bathroom
- Oversized cedar-lined walk-in closet upstairs
- Full bathroom upstairs with leathered granite countertops, double vanity, modern fixtures and tile floors
- Green building features include blown foam insulation, electric hybrid hot water heater, high-efficiency heat pump with gas furnace back-up, 2x6 walls, and Energy Star windows
- Whole-house humidifier on the HVAC system
- Utility/laundry room/walkway with honeycomb wood tile and extra storage space connects to two-car attached garage
- Great storage with attic and basement storage
- Rustic barn view for a bucolic entry



Amazing Screened Porch with Double Sided Fireplace



Professional Landscaping



Open Living/Dining Room is Perfect for Entertaining



Living Room with Modern Tiled Gas Fireplace



Wide-Plank Oaks Floors, Huge Windows and 10' Ceilings



Kitchen Opens to Dining Room



Tons of Light and Space for Large Table



Alcove is a Sweet Spot for Baby Grand or Reading Nook



Gourmet Chef's Kitchen with Honeycomb Tile Backsplash



Breakfast Bar with Catering Sink



Double Oven/Gas Range by Wolf



Custom Cabinets and Modern Fixtures



Spacious and Bright • Opens to Beautiful Screened Patio

6 EVIAN COURT
Tudor Style Home in The Thoms Estate
6 Evian Court
Asheville, NC 28804



Utility Room with Custom Cabinets and Honeycomb Wood Tile Floors



Built In Office with Yard View • Off the Kitchen



Access to Patio From Kitchen Walkway



Half Bath with Granite Countertops and Modern Fixtures



Wide Trim and Crown Molding Throughout



Amazing Screened Porch with Double-Sided Fireplace



Luxurious Master Suite



Double Walk-In Closet in Master Suite



Master Bath • Double Granite Vanity and Walk-In Shower



Private Office on Main Level

6 EVIAN COURT

Tudor Style Home in The Thoms Estate

6 Evian Court

Asheville, NC 28804



Bedroom Two with Private Views



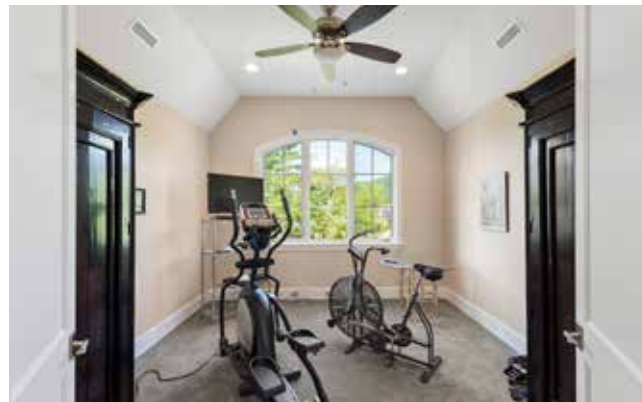
Grand Staircase with Wrought Iron Railings



Full Bath on Second Level • Leathered Granite Counters



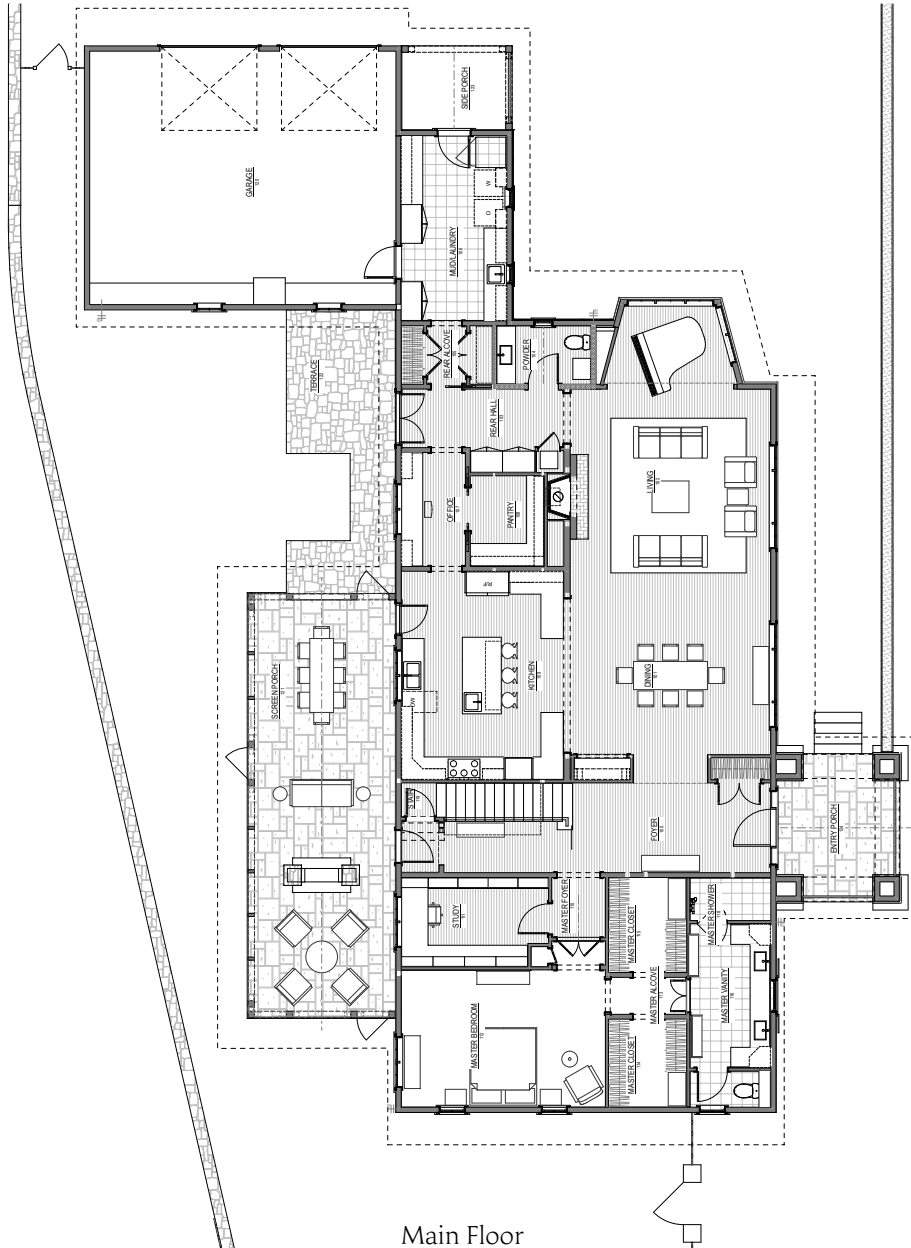
Bedroom Three with Ample Closet Space



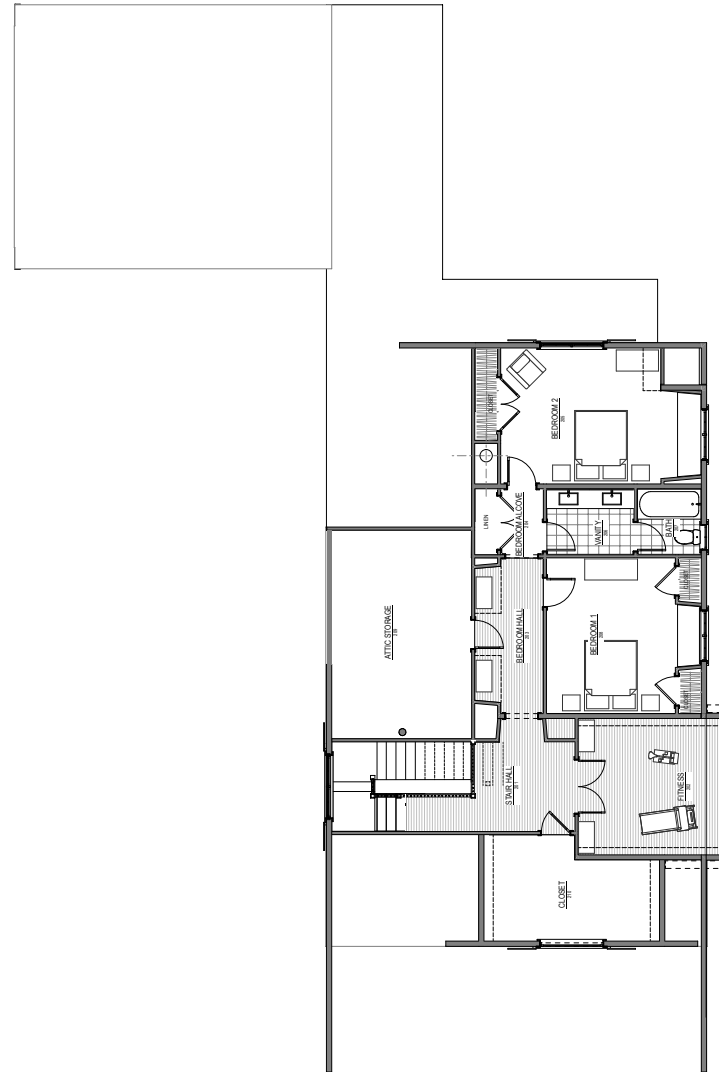
Beautiful Armoires in Bedroom Four



Cedar-Lined Walk-In Closet on Second Level



Main Floor



Upper Level



MOSAIC
COMMUNITY LIFESTYLE REALTY

60 Biltmore Avenue, Asheville, NC 28801 tel : 828.707.9556 fax: 800.553.1491

WWW.MYMOSAICREALTY.COM



Impressive modern Tudor on a double lot in the beautiful Thoms Estate. Convenient N. Asheville location near Country Club of Asheville, Downtown, and the Blue Ridge Parkway. Enjoy neighborhood amenities and proximity to shopping and dining. Welcoming foyer leads to an open plan with light-filled alcove perfect for baby grand. This home boasts a chef's kitchen with granite countertops, honeycomb tile backsplash, a walk-in pantry and designer appliances. Details include wide plank oak floors, crown molding and custom built-ins. Spacious master with two walk-in closets and luxurious bathroom with a custom tiled walk-in shower. Large private office adjacent to master. Wrought-iron staircase leads to second level with three bedrooms and full bathroom. Fabulous screened porch with double fireplace adjacent to stone tile patio. Utility room with extra storage connects to the attached two-car garage. Gorgeous design by Samsel Architects. This custom home is perfect for spacious one-level living.



For more information, please contact:

MIKE FIGURA

828.337.8190

MIKE@MYMOSAICREALTY.COM

DIRECTIONS

From downtown, take Biltmore Avenue north. Biltmore Avenue becomes Merrimon Avenue. Follow Merrimon Avenue north. In 2 miles, turn right onto Beaverdam Road. Turn left onto Elk Mountain Scenic Hwy. Turn right onto French Willow Drive. Turn right onto Evian Court. 6 Evian Court is on the left. No sign in yard.