



2 WORLEY PLACE

Classic West Asheville Bungalow with Charming Curb Appeal



MOSAIC
COMMUNITY LIFESTYLE REALTY

3 Bedrooms, 1 Bathroom
1,387 SF 0.22 Acre
MLS #4322493



2 WORLEY PLACE ASHEVILLE, NC 28806

3 Bedrooms, 1 Bathroom
1,387 SF 0.22 Acre
MLS #4322493

FEATURES

- Classic West Asheville bungalow** with charming curb appeal
- One-level living** with an **easy, functional layout**
- Three bedrooms**, one full bath
- Large living room** with cozy **wood-burning stove**
- Hardwood flooring** in main living areas and **fresh interior paint** throughout
- Updated kitchen** with **great storage and countertop space**
- Large deck off the kitchen** plus an **inviting front porch**—ideal for entertaining
- Private front yard** with **plenty of room** for planting or creating garden beds
- Spacious basement** with its own **exterior entrance**—excellent expansion potential
- Newer appliances** and **well-maintained systems**
- Off-street parking** for multiple vehicles
- Quiet street** in a sought-after location
- Walkable to Haywood Road** and just **minutes to downtown Asheville**





MOSAIC
COMMUNITY LIFESTYLE REALTY

46 Orchard Street, Suite 100, Asheville, NC 28801
WWW.MYMOSAICREALTY.COM





MOSAIC
COMMUNITY LIFESTYLE REALTY

46 Orchard Street, Suite 100, Asheville, NC 28801
WWW.MYMOSAICREALTY.COM







Welcome to 2 Worley Place—an inviting 3BR/1BA bungalow full of classic early-1900s charm and thoughtful updates. This move-in-ready home offers a large, light-filled living room anchored by a cozy wood-burning stove, original hardwood floors, and fresh interior paint throughout. The updated kitchen provides great counter space, ample storage, and easy access to the outdoors. Enjoy a lovely, private front yard and an ideal West Asheville location—close to downtown and walkable to Haywood Road’s restaurants, breweries, coffee shops, and boutiques. One of the home’s standout features is the generous basement with its own exterior entrance. With plenty of space and flexibility, it’s perfect for expansion, workshop space, storage, or future additional living area. A spacious front porch wraps around to the deck off the kitchen, creating multiple outdoor spaces for entertaining, relaxing, or soaking up the neighborhood vibe.

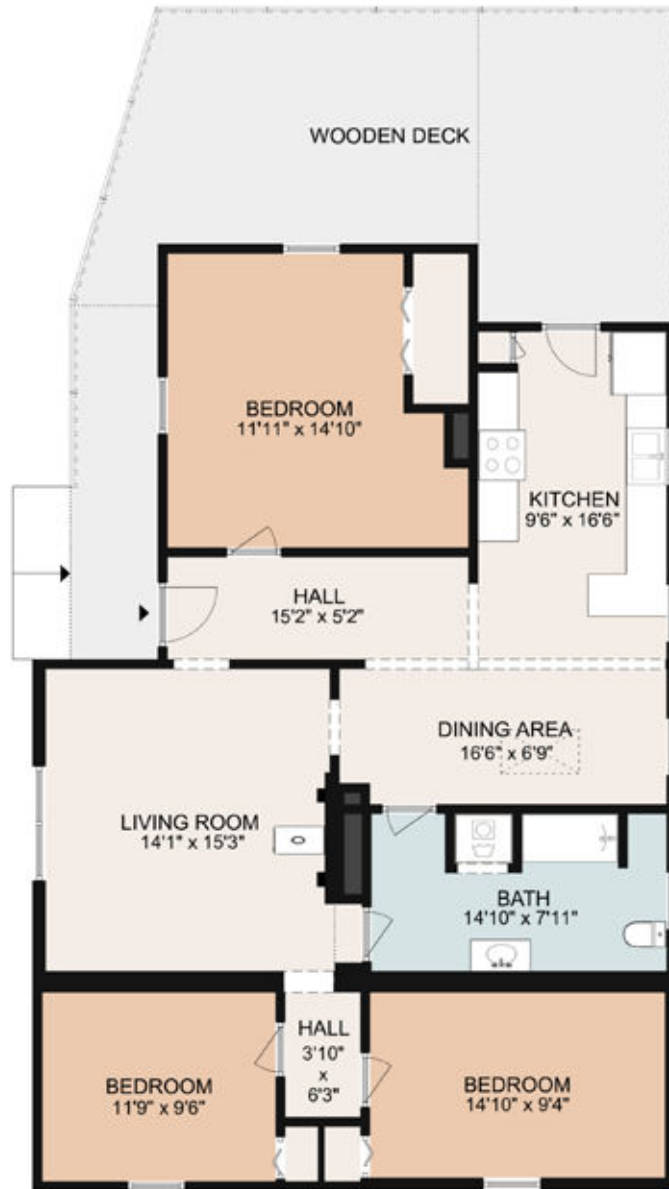


For more information, please contact:

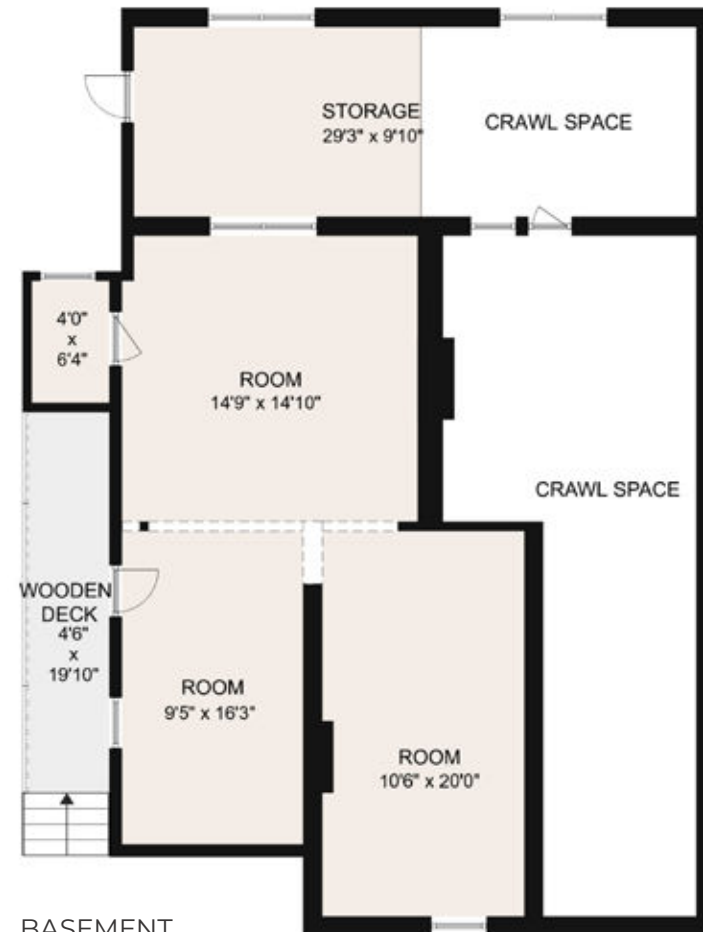
JACKIE DIRSCHERL
828-508-1352
JACKIE@MYMOSAICREALTY.COM

DRIVING DIRECTIONS

FROM HAYWOOD ROAD: Head east for about 0.3 mile, then turn left onto Westwood Place, then continue by turning left again to stay on Westwood Place. After about 0.4 mile, turn left onto Millbrook Road, then take a right onto Worley Place. Make a final left to stay on Worley Place, and the home will be just ahead at 2 Worley Place. Mosaic sign will be in the yard.



MAIN LEVEL



BASEMENT

FLOOR PLANS