



62 WILL CAMPBELL ROAD

Tranquil and Unique Property on 5.63 Luscious Acres with a Running Creek and Views



MOSAIC
COMMUNITY LIFESTYLE REALTY

3 Bedroom, 2 Bathrooms + Home Office +
Heated Rec Room + Rustic Cabin
1,466 SF • 5.63 Acres
MLS #4145723



INFO

62 Will Campbell Road, Swannanoa, NC 28778
3 Beds, 2 Baths + Home Office + Heated Rec Room + Rustic Cabin
1,466 SF • 5.63 Acres
MLS #4145723

FEATURES

- 5.63 acres of tranquil privacy: year-round mountain views, running creek, main home plus rustic cabin
- 20 minutes to downtown Asheville or Black Mountain
- Treehouse-like home, plus rustic cabin and gazebo
- Spring-fed creek originates approximately 300 yards above the property — amazing water
- Home features a relaxing covered deck with year-round views — perfect spot for your morning coffee or dinner parties with friends
- Come relax next to the running creek and listen to the birds
- Open living floor plan with one bedroom on each level
- Custom mosaic-tiled heat barrier behind wood-burning stove matches the four mountain peaks that you gaze at from the deck
- Custom wood finishes throughout: hickory floors, clear pine trim
- Pet closet/room near the home entry provided easy access in and out for your favorite pets; potential to create pantry or coat closet instead
- Basement has semi-finished, heated rec room, currently used as a soccer space; endless possibilities for easily finishing (or keep it as a fun space)
- Ideal home office (or bonus room), not included in total SF — has separate entrance and mini-split system for heating and cooling
- All-electric home: heat pump, mini-split, water heater, appliances (propane oven/range in kitchen)



Private Primary Suite Deck

- Three-bedroom septic system and private well
- Fiber cement siding, cedar shingles, smart siding, and metal roof
- Potential for small bathroom to be added to basement
- Low road-maintenance dues are currently \$400 per year
- Rustic cabin built with reclaimed oak, poplar, and hemlock
 - › Wraparound deck — spiral staircase leads to a large room, ideal for storage or play
 - › Jetted soaking tub and water heater just for the cabin
 - › Power, sewer, and water all run to the rustic cabin
 - › Come swing on the porch of the cabin while listening to the creek
 - › Loft space above the main cabin room
- Fire pit provides perfect space for hosting friends and family
- Gazebo sits near the creek below the house and cabin



Modern, Open Floor Plan



No Window Treatments Needed for Privacy



Beautiful Living Room



Stunning, Custom Mosaic-Tiled Wall



Custom Bench Seat - Ideal Space for Reading



Lovely Dining Space



Eat-in Kitchen with Space for Two Bar Stools



Copper Farmhouse Kitchen Sink



Elongated Hex Tile Backsplash • Island Workspace



Primary Suite • Surrounded by the Trees



Primary Includes Wide, Arched-Top Closet



Primary Bathroom Includes Soaking Tub ...



... and a Custom-Tiled Walk-in Shower



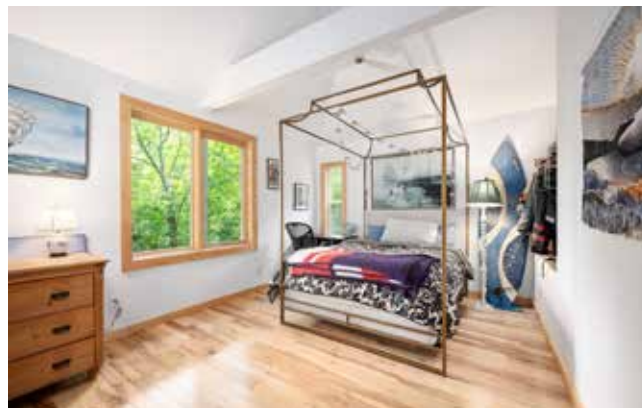
Second Main-Level Bathroom Includes Laundry ...



... and a Walk-in Shower and Pedestal Sink



Beautiful Hickory Floors



Upper-Level Bedroom



Clear Pine Trim throughout Home



Basement Bedroom (Virtually Staged)



Semi-Finished and Heated Basement Rec Room



Covered Deck for Rainy Nights



Year-Round Views Peek through the Trees



Steps Lead to Home Office/Bonus Room



Home Office or Bonus Room



Rustic Cabin Is Steps Away from Home



Wood and Metal Siding



Wraparound Cabin Deck



Spiral Stairs Lead to Bonus Space or Storage



Cabin Includes Porch Swing and Large Deck



Jetted Soaking Tub (Electric and Sewer Also Run to Cabin)



Special and Tranquil Property



Perfect Spot for Your Hammock



Firewood Shelter for Pit and Home's Wood-Burning Stove



Fire Pit Close to the Running Creek



Listen to the Relaxing Creek and Birds



Swannanoa Privacy



20 Minutes to Downtown Asheville or Black Mountain

62 WILL CAMPBELL ROAD

Treehouse-like home on tranquil and private 5.63 acres — with running creek and year-round mountain views. This special opportunity sits just 20 minutes from downtown Asheville or downtown Black Mountain. Property includes the unique main home, rustic cabin, gazebo, and fire pit; the perfect spaces for hosting your friends ... or simply enjoying the peaceful quiet. The main home includes an ideal home office, a fun basement recreation room, and a modern, open floor plan. Custom tile finishes throughout the home include a beautiful mosaic tile behind the wood-burning stove, depicting nearby mountains. Perfect for a second home or for enjoying quiet, year-round living as the sellers do.



For more information, please contact:

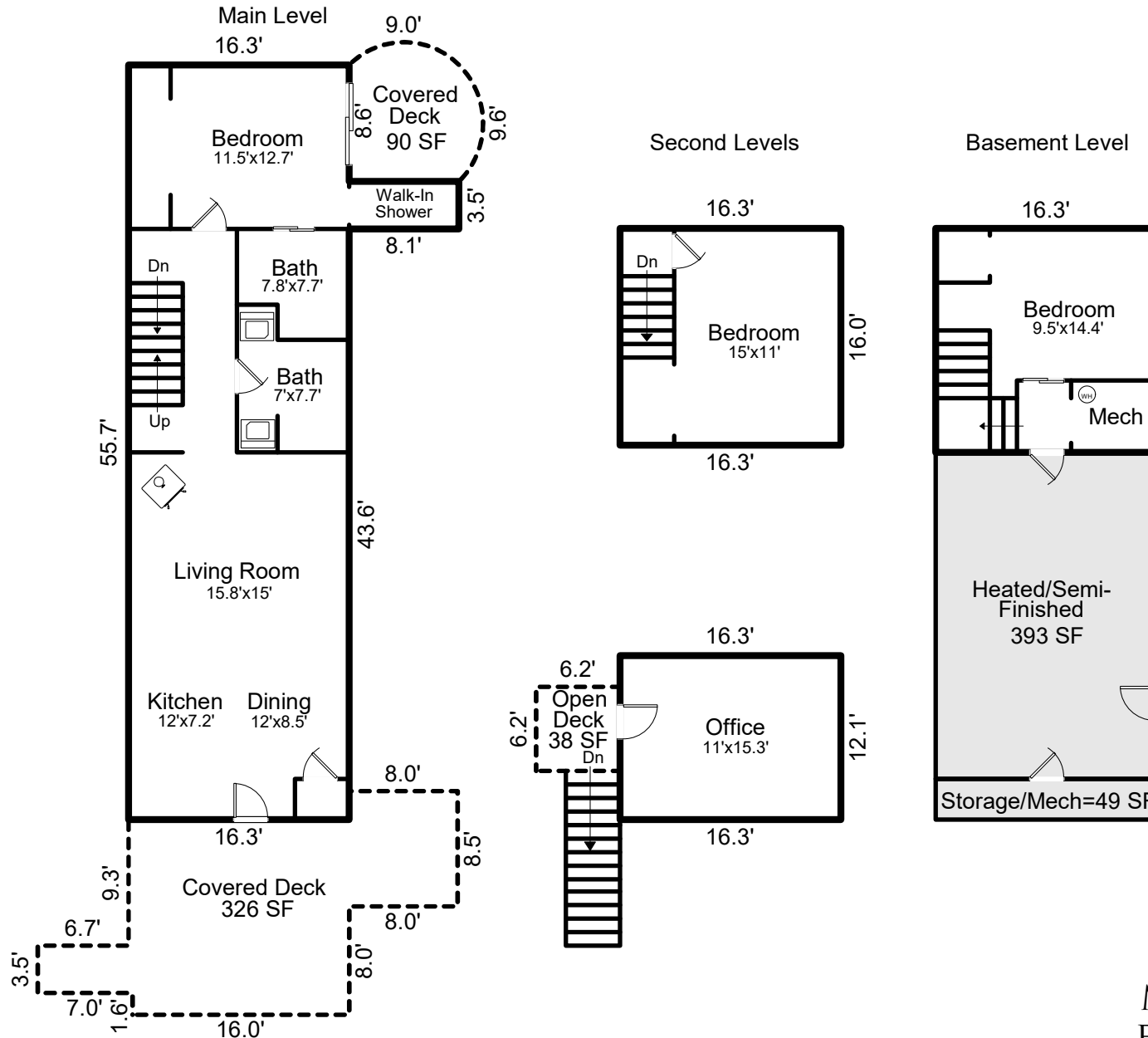
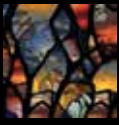
MEGAN SHOOK

828.450.6797

MEGAN@MYMOSAICREALTY.COM

DIRECTIONS

FROM ASHEVILLE: Take I-40 E to exit 55. Turn left and go under the highway, turning right on US-70/Tunnel Road. Turn right on Buckeye Cove Road. Turn right on Buckeye Access Road. Turn left on Christian Creek to the dead end and road turns into gravel. Turn left on Bryant, left on Will Campbell. Property will be on your left. Sign and directional signs in place.



MAIN HOUSE
FLOOR PLANS

