



45 WILDERNESS DRIVE

Serene, Cedar-Sided Mountain Chalet with Winter Views on 4+ Acres



MOSAIC
COMMUNITY LIFESTYLE REALTY

3 Bedrooms, 2 Bathroom + Office
Basement Studio Flex Space and Garage
1,945 Square Feet • 4.04 Acres
MLS #4221623

INFO

3 Bedrooms, 2 Bathroom + Office
Basement Studio Flex Space and Garage
1,945 Square Feet • 4.04 Acres
MLS #4221623

FEATURES

- Private and convenient mountain setting on 4.04 wooded acres
- 20 minutes to Asheville, 14 minutes to Weaverville, 13 minutes to Mars Hill, NC
- Versatile layout - can be split into two living areas with separate entrances
- Basement studio flex space with kitchenette
- Private primary bedroom upstairs features tons of closet space, large windows, and sweet loft space overlooking the great room
- Primary en-suite bath with soothing jacuzzi tub
- Two spacious bedrooms plus office space on main level
- Full bathroom on main level with soapstone vanity countertop and modern antique brass fixture
- Main kitchen features matte black Delta Antoni kitchen faucet, granite countertops, Frigidaire refrigerator, 2022 Midea dishwasher, GE microwave, and Frigidaire stove
- Custom Studio Kitchenette has butcher block countertops, Avanti stove, and new Frigidaire refrigerator
- Spacious laundry area and utility room
- 2018 American Standard heat pump
- Durable cedar siding
- New roof in December 2023
- Beautiful stone fireplace with new Vermont Casting wood stove in 2023
- New chimney liner, cap, and flashing in 2023
- Stunning two-story great room with floor-to-ceiling windows
- Hardwood floors and ceramic tile flooring



Floor-to-ceiling windows showcase the amazing views!

- Wraparound deck and patio
- Winter mountain views
- Extensive property fencing
- Two small wet weather streams
- One-car garage and daylight walkout basement
- Open-use zoning
- Underground power
- Fire pit with hardscaped boulder bench
- Ample firewood to convey
- Natural stone and rock outcroppings throughout property
- Fruit trees and berry bushes
- Wired generator plug with designated subpanel installed



Bright and open living space with a wall of windows!



Stunning great room opens up to wraparound deck



Enjoy winter sunset views from deck



Immaculate hardwood floors



Great space for entertaining!



Brand new Vermont Castings wood stove for cozy nights



Rich wooden cabinets and granite countertops



Delta Antoni faucet and stainless steel appliances



Kitchen island with an incredible view



Main level full bathroom



Main level bedroom #1 • All bedrooms get great light



Main level bedroom #2 • All have hardwood floors



Main level office space



View looking down from primary suite upstairs



Primary bedroom upstairs



Primary bathroom with jacuzzi tub



Ample closet space in primary bedroom

45 WILDERNESS DRIVE

Serene Mountain Chalet with Winter Views

Weaverville, NC 28787



Amazing basement flex space perfect for guests or rental



Custom kitchenette with butcher block counters



Great ceramic tile floors throughout basement flex space



Access to wraparound patio from basement flex space



Huge wraparound porch with patio below



Winter mountain views



A private mountain retreat



New roof added in 2023



Convenient to Asheville, Weaverville, and Mars Hill



Spring photo — new roof was added December 2023



Spring photo — new roof was added December 2023



Spring photo - 4+ acres of serenity



Spring photo



Mountain home in the trees

Discover serenity in this cedar-sided mountain chalet nestled on 4.04 acres. The stunning two-story great room features vaulted ceilings and floor-to-ceiling windows, complemented by hardwood floors and a wrap-around deck. Recent upgrades include a new roof, Vermont Castings wood-stove, and lower-level studio kitchenette. The versatile floor plan can be divided if desired and offers a private primary suite with en-suite bathroom upstairs, two additional bedrooms, a full bath, office, and kitchen on the main level, plus a basement flex space with separate entrance—ideal for guests, rental income, a home business or workshop. Enjoy winter sunset views through the forest canopy or cozy up by the fireplace while gazing out the windows at your own private retreat. This wooded sanctuary features extensive fencing, a fire pit, stone boulders, beautiful rock outcroppings, and two wet-weather streams. Minutes from I-26, and perfect for a primary residence, second home, or vacation rental.



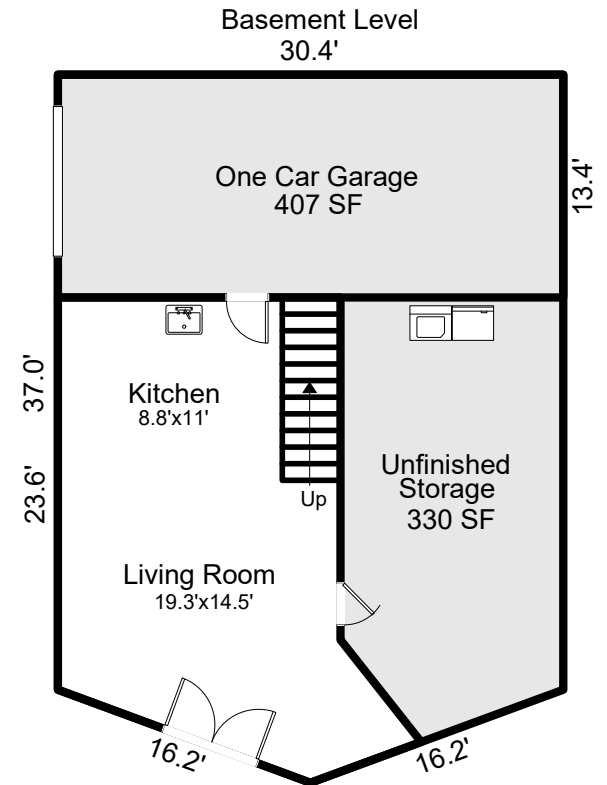
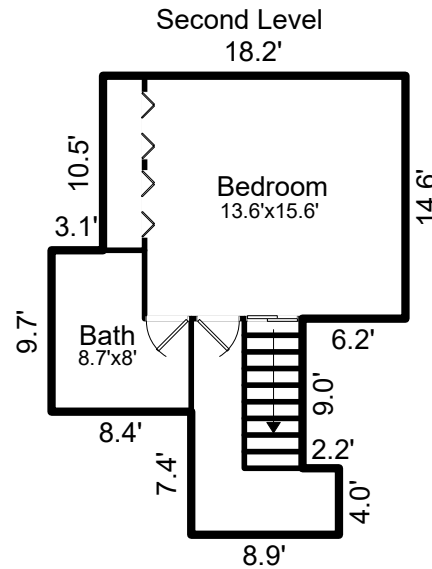
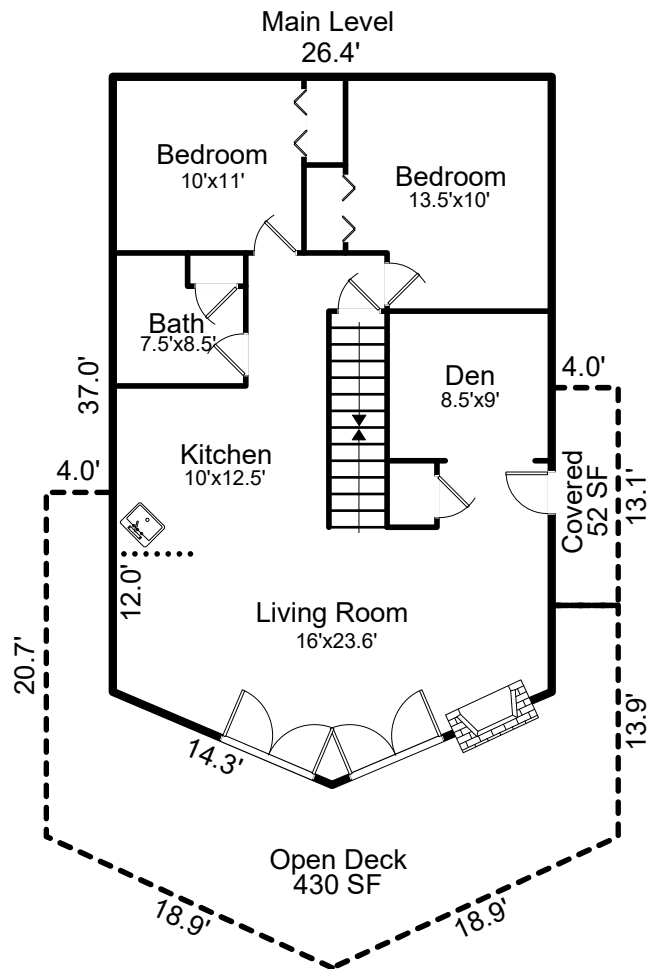
For more information, please contact:

RIKA TAYLOR

828.230.0964

RIKA@MYMOSAICREALTY.COM

DIRECTIONS GPS works. From Asheville: Take I-26 West to exit 15(Barnardsville/Jupiter Rd) and make a right onto 197. Go 1 mile and make a right onto Gentry Branch Rd. Go .4 miles and turn left onto Wilderness Dr. Follow for .3 miles and the driveway is on the right. Follow signs. GPS works.



FLOORPLANS