



MOSAIC
COMMUNITY LIFESTYLE
REALTY

OAKHURST



46 WHITE FAWN DRIVE | ASHEVILLE, NC 28801

46 WHITE FAWN DRIVE
ASHEVILLE, NC 28801



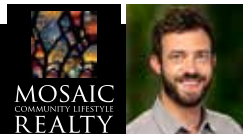
OAKHURST



GREENBUILT NEW CONSTRUCTION IN OAKHURST

Located in the private Oakhurst neighborhood, nestled between McCormick Field and the hospital, this newly constructed 4BR/3.5BA home offers modern living with walking access to the South Slope and downtown Asheville. The neighborhood boasts a renovated \$4M Memorial Field (new track and field), a \$30M upgraded McCormick Field (in progress), and a 30-acre wooded park with trails leading to the White Fawn reservoir. The home features quality green-built construction, an open floor plan, brand-new LG appliances, two decks, primary bedroom suite, a gas fireplace, and winter views of Mt. Pisgah. Additional Pella-clad windows added to bathe spaces in natural light. Fully finished basement offers a separate bedroom and living space; could easily be converted into a homestay (buyer to verify) or office. Enjoy downtown living in a serene setting.

4 BEDS | 3.5 BATHS | 2,605 SF | 0.15 ACRE | MLS #4176707



PATRICK O'CAIN
828-808-6908
PATRICK@MYMOSAICREALTY.COM

46 WHITE FAWN DRIVE ASHEVILLE, NC 28801



46 WHITE FAWN DRIVE | ASHEVILLE, NC 28801

4 BEDS | 3.5 BATHS | 2,605 SF | 0.15 ACRE | MLS #4176707

FEATURES

- Green construction
- Pella window package
- Fully finished basement, ideal for a fourth bedroom or a homestay (buyer to verify)
- Hardwood floors
- Fireplace
- Open floor plan on main level
- Tasteful architectural details
- Modern aesthetic
- Primary bedroom with ensuite bathroom and two closets
- Custom carpentry

GREEN FEATURES

- GreenBuilt NC certified
- Energy Star certified
- Superior Walls - poured concrete foundation
- Energy Star appliances
- Electric heat pump; super energy-efficient in WNC climate
- On-demand gas hot water heater
- Spray foam insulation
- Sealed ductwork
- Passed third-party testing
- Low-flow fixtures
- Radon mitigation
- Hardie Board siding
- Green framing techniques for a tighter envelope and better-insulated home, leading to energy and water savings
- Third-party verification and quality assurance

DRIVING DIRECTIONS

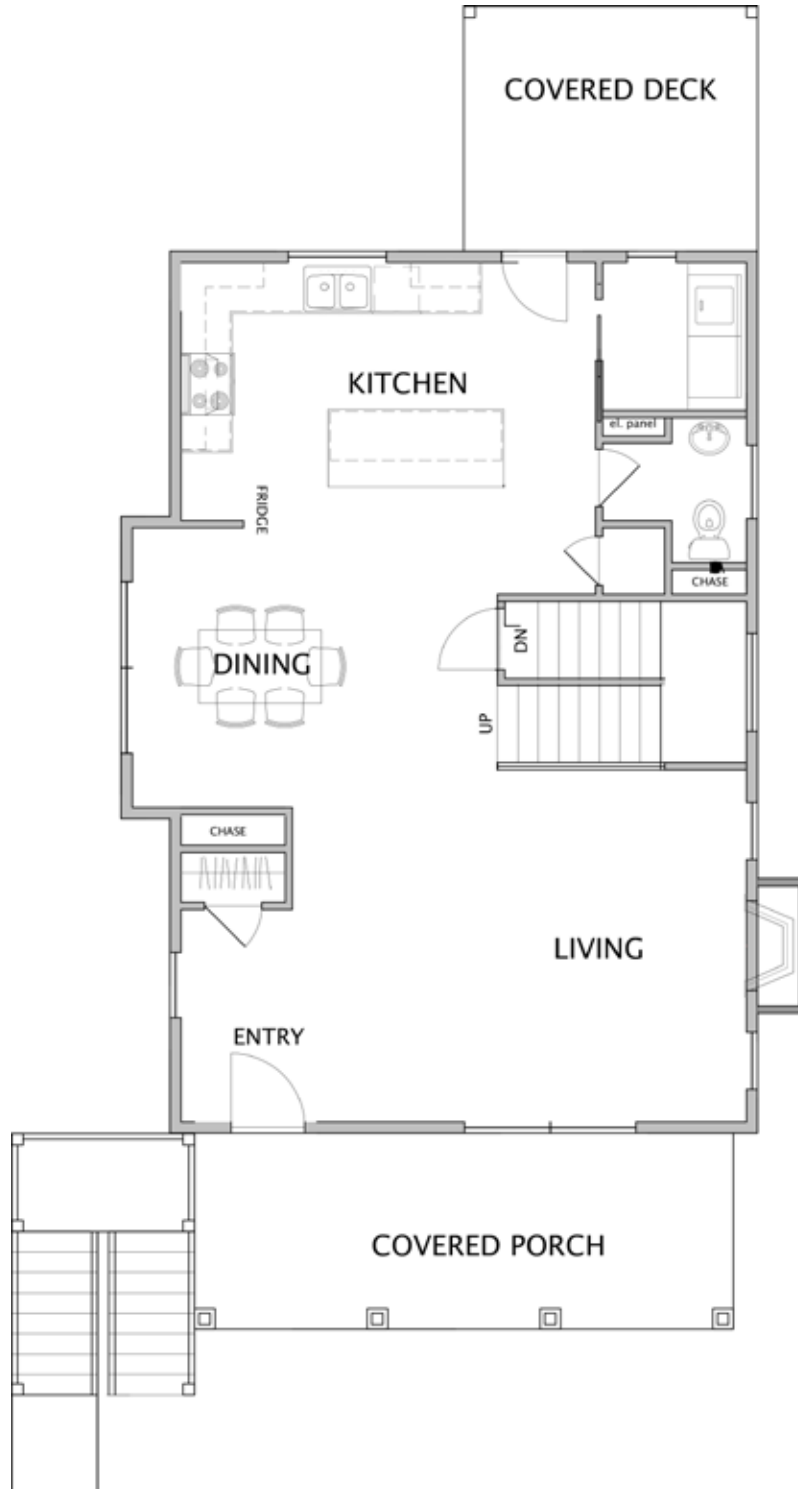
FROM BILTMORE AVENUE: Turn onto White Fawn Drive. Up the hill and on your left. Off-street parking is around the turn on the back side of the house.



46 WHITE FAWN DRIVE | ASHEVILLE, NC 28801

4 BEDS | 3.5 BATHS | 2,605 SF | 0.15 ACRE | MLS #4176707

MAIN LEVEL



46 WHITE FAWN DRIVE | ASHEVILLE, NC 28801

4 BEDS | 3.5 BATHS | 2,605 SF | 0.15 ACRE | MLS #4176707

UPPER LEVEL

