



156 WHISPER MOUNTAIN DRIVE

Luxury Mountain Retreat in Whisper Mountain



MOSAIC
COMMUNITY LIFESTYLE REALTY

4 Bedrooms, 4.5 Bathrooms
2,798 SF • 1.75 Acres
MLS #4298840



**156 WHISPER MOUNTAIN DRIVE
LEICESTER, NC 28748**

4 Bedrooms, 4.5 Bathrooms
2,798 SF · 1.75 Acres
MLS #4298840

FEATURES

SQUARE FOOTAGE

Above-grade heated living area: 2,272 SF
Additional 526 SF in basement is non-contiguous

GREEN FEATURES

- Energy Star Certified
- Bronze-Level Healthy-Built
- Backup generator
- On-demand hot water heater
- Rainwater collection and rain barrels

ADDITIONAL FEATURES

- Two-story outbuilding with electrical power** and shop on lower level; room with wood stove and ceiling fan on upper level (currently used as writing room)
- Guest suite in basement:** bedroom with ensuite bath and a **wet bar**
- Custom in-ground spa with waterfall features**

SUBDIVISION FEATURES

Sky Valley Clubhouse, gated community, picnic area, recreation area, walking trails





MOSAIC
COMMUNITY LIFESTYLE REALTY

46 Orchard Street, Suite 100, Asheville, NC 28801
WWW.MYMOSAICREALTY.COM





MOSAIC
COMMUNITY LIFESTYLE REALTY

46 Orchard Street, Suite 100, Asheville, NC 28801
WWW.MYMOSAICREALTY.COM



156 WHISPER MOUNTAIN DRIVE

Luxury Mountain Retreat in Whisper Mountain

Leicester, NC 28748









Rustic Elegance Meets Eco-Luxury

Nestled within the pristine, gated community of Whisper Mountain, this home blends luxury, comfort, and environmental mindfulness in a setting unlike any other. Crafted in a timeless, rustic farmhouse style, the home features vaulted ceilings, rich natural textures, and intentional green building features throughout. The elegant and inviting kitchen features high-end appliances, a farmhouse sink, and a large island topped with galaxy granite. The kitchen flows into the two-story living room filled with an abundance of windows and stone fireplace with built-in wood stove insert providing natural light and cozy warmth. Two spacious bedrooms on the main level each offer ensuite baths, creating ideal single-level living. Upstairs you find a sunny loft and office nook that overlooks the space, adding charm and versatility as well as a third bedroom and full bath for guests. Downstairs, a beautifully designed guest suite or apartment includes a private entrance, full bath, and wet bar—perfect for visitors, rental income, or multi-generational living. A new Brava cedar shake roof was installed in summer 2025 and compliments the Craftsman style, while adding to the long list of sustainable features. The two-story outbuilding is an exceptional bonus—built as a creative writing retreat above a workshop, it's a space that inspires. Take in long-range views of Mount Mitchell and epic sunsets from the covered deck and patio or unwind in your custom-built in-ground spa with stone detailing and waterfall features after walking the neighborhood trails. Rich in biodiversity, the Whisper Mountain Community and majestic Sky Valley Clubhouse feel like a private national park with spring-fed creeks, brilliant night skies, shared gathering spaces, hand-laid stone walking trails, and access to all the amenities of a vibrant mountain community.



For more information, please contact:

JUSTIN MITCHELL
828-713-9400

JUSTIN@JUSTINASHEVILLE.COM

DIRECTIONS

FROM ASHEVILLE: Take New Leicester Highway/NC-63 W for 19 miles, then turn left into the Whisper Mountain Community. The home will be on the right.



Whisper Mountain Community and Amenities

Whisper Mountain is a low-density community with just 50 homesites on 450 acres. Over half the land is permanently conserved, offering 225 acres of protected green space with hiking trails, spring-fed creeks, and open common areas.

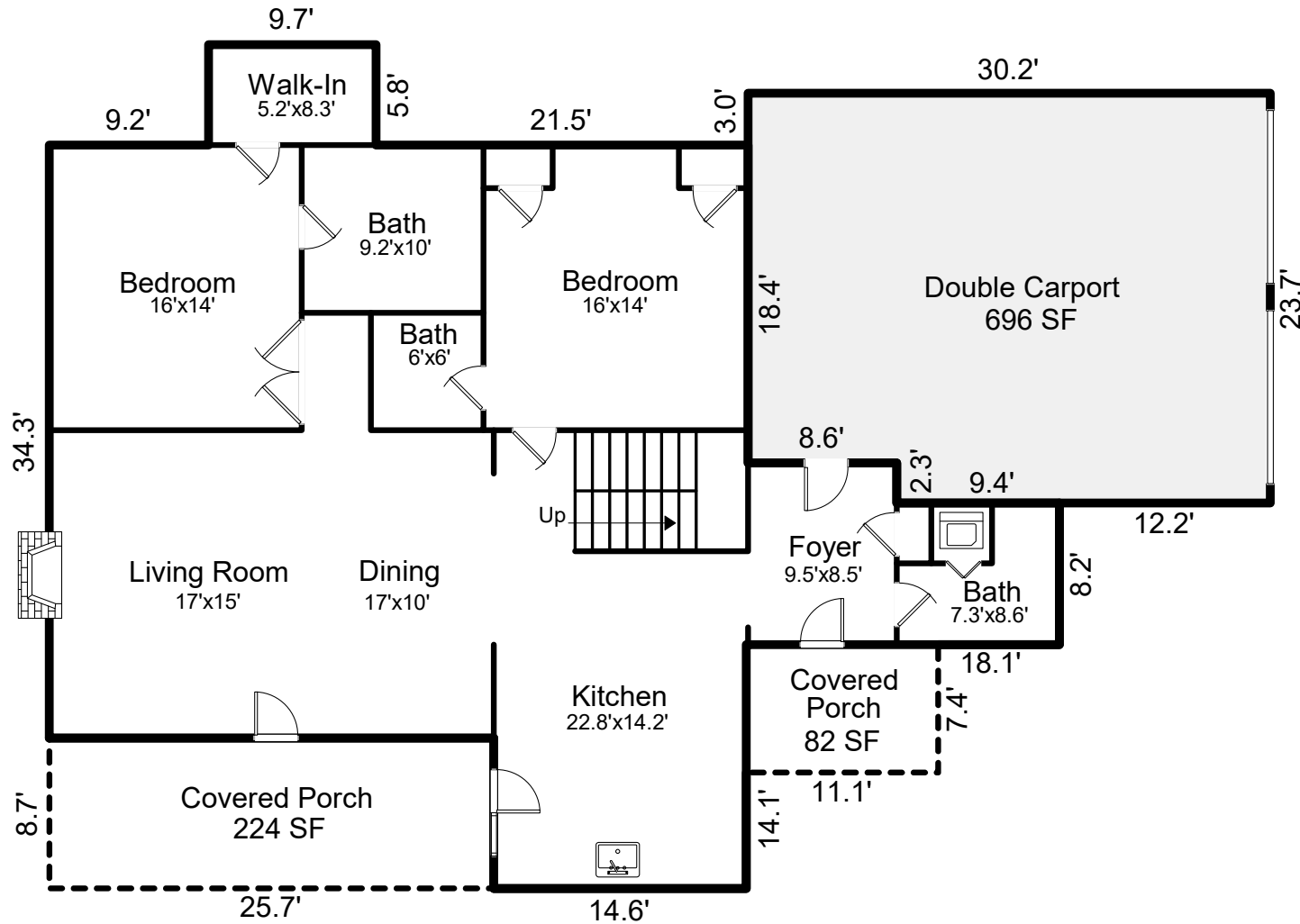
Sky Valley Lodge serves as the heart of the community with a full kitchen, stone fireplace, game loft, fitness room, and decks boasting 30-mile views.

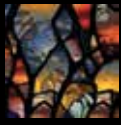
Enjoy the outdoors at Sky Valley Park, a wide-open field perfect for play or sunset picnics overlooking Mt. Mitchell. For quieter moments, wander to Double Creek Park, where stone paths lead to picnic spots and log benches tucked into natural outcroppings beside the creek.

Whisper Mountain combines natural beauty, thoughtful amenities, and a strong sense of community—it's a truly special place to call home.

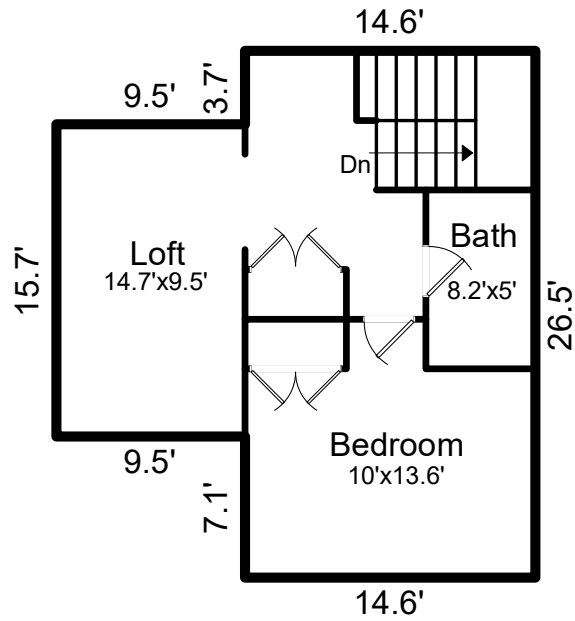




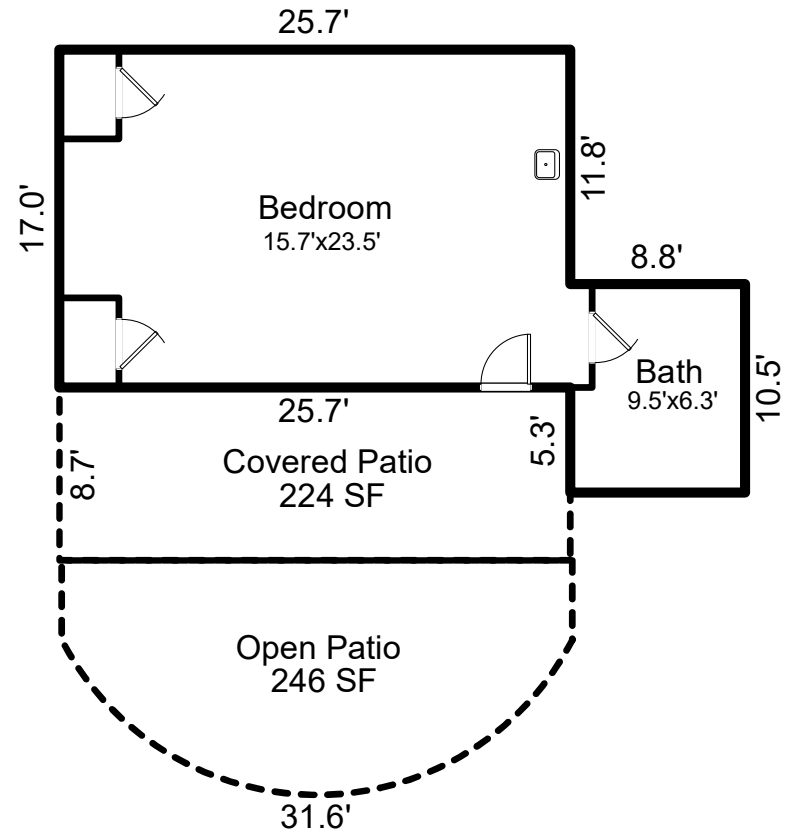




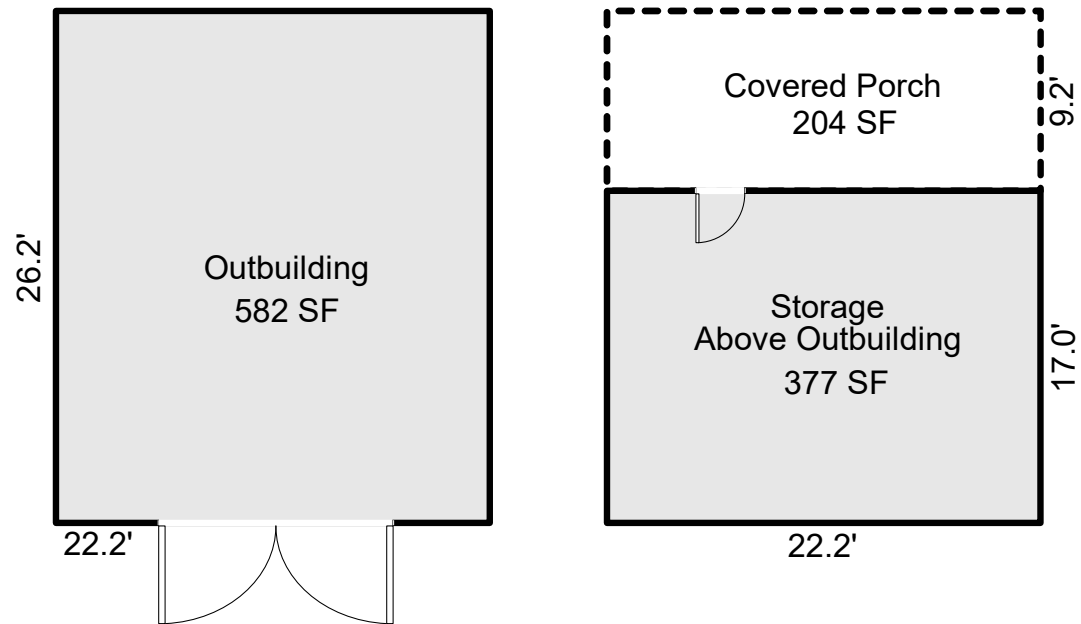
UPPER LEVEL



BASEMENT



UPPER AND BASEMENT LEVELS



OUTBUILDING