



## 10 WESTCHESTER DRIVE

Charming 1927 Home on Double Lot in Historic Kenilworth



**MOSAIC**  
COMMUNITY LIFESTYLE REALTY

3 Bedrooms, 1.5 Bathrooms  
1,990 SF • 0.27 Acre  
MLS #4241694



## INFO

10 Westchester Drive  
Asheville, NC 28803  
3 Bedrooms, 1.5 Bathrooms  
1,990 SF • 0.27 Acre  
MLS #4241694

## FEATURES

- Great Kenilworth location on a quiet, private double lot; the street has many updated, renovated, and newer homes
- Walkable neighborhood; and only a few minutes' drive to downtown Asheville, Mission Hospital and Biltmore Village
- Inviting front porch with beautiful original wrought iron columns and handrails
- Beautiful period details — original windows with decorative casings, original oak floors on the main level (some under carpet), solid wood doors, glass doorknobs, original banisters, and magnificent crown molding
- Large, mirrored coat closet at entry
- Wood-burning fireplace and original built-in bookcase feature in the living room
- Spacious dining room has a lovely view of the side yard
- Sunny den off of the main living room has a separate entrance and access to the backyard



Large (0.27-Acre) Double Lot

- Primary bedroom could be a suite with the addition of a bathroom
- Large, unfinished basement with a one-car garage
- Back patio
- Ample off-street parking
- Electric water heater
- 2011 natural gas boiler
- Beautiful brick and aluminum exterior
- 2023 roof; new gutter guards
- Ability to develop a second lot
- Mature trees, like the gorgeous magnolia that graces the side yard
- City amenities, such as city water and sewer and sanitation services



Wood-Burning Brick Fireplace in Living Room



Original Banister, Crown Molding, and Window Casings



Abundant Natural Light



Dining Room Faces Beautiful Side Yard



Full of Light with Large, Original Windows



Convenient Half Bathroom on Main Level



Bonus Room near Kitchen Makes a Cute Breakfast Nook



Kitchen Has a Covered Side Entrance



Side Den Also Has Outside Access



Upstairs Landing Connects All Bedrooms and a Bathroom



Primary Bedroom or Future Primary Suite



Renovate the Adjacent Room to Make a Primary Suite



Spacious Second Bedroom



Spacious Third Bedroom



Upper-Floor Full Bathroom



Large, Unfinished Basement



Perfect for More Storage or for Increasing the Living Area



Also Includes a One-Car Garage



Outside, There's a Back Patio ...



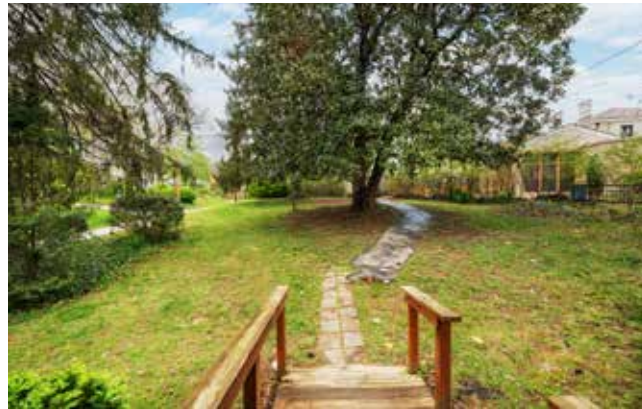
... Just Around the Corner from the Kitchen



Room for Adding a Circular Driveway!



Quiet and Private Lot ...



... with a Gorgeous and Peaceful Side Yard



Level Side Yard with Mature Trees



Brick and Aluminum Exterior



New Roof, Gutters, and Gutter Guards in 2023

**10 WESTCHESTER DRIVE**  
Charming Kenilworth Home on Double Lot  
Asheville, NC 28803



1927 Kenilworth Home on a Double Lot

Come see this traditional, charming 1927 brick home on a private double lot on one of historic Kenilworth's most walkable streets. Step inside and marvel at the craftsmanship of the late 1920s — defined rooms; original wooden banisters on the staircase with a built-in bookcase near its landing; large, decorative original windows, including wide windows in dining room and den; decorative crown molding; a wood-burning brick fireplace; glass door knobs; a rare garage; and beautifully preserved original oak floors throughout. Upgrades include a new roof, gutters and gutter guards (2023) and a natural gas boiler (2011). Unfinished basement provides more storage/utility space, or an opportunity for more heated square footage. Outdoor patio, too! Convenient to Mission Hospital, Biltmore Village, and downtown Asheville. Plan provides perfect opportunities for expanding the kitchen and for creating a primary suite — or you can just move right in and be perfectly comfortable!



For more information, please contact:

**LAURA MOYE**

**828.301.4518**

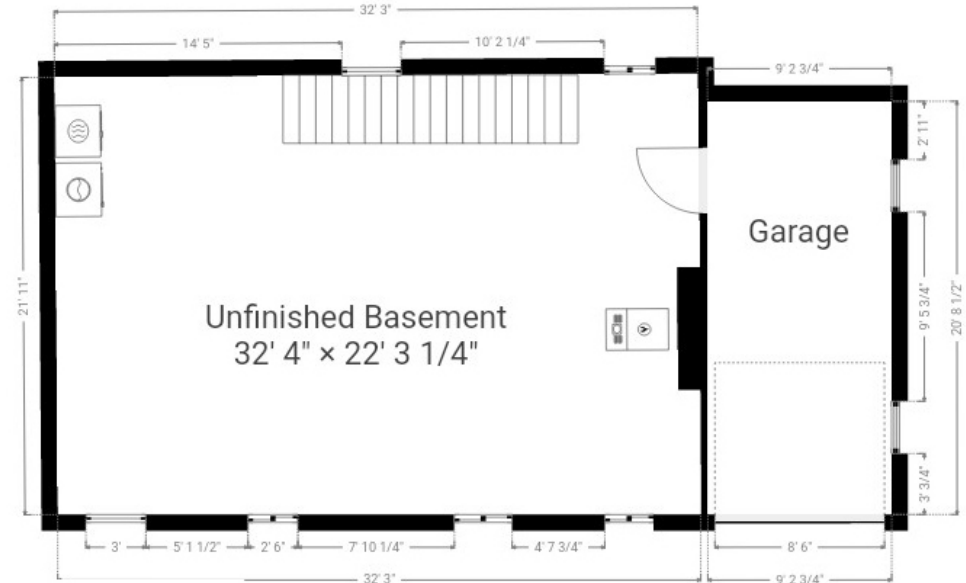
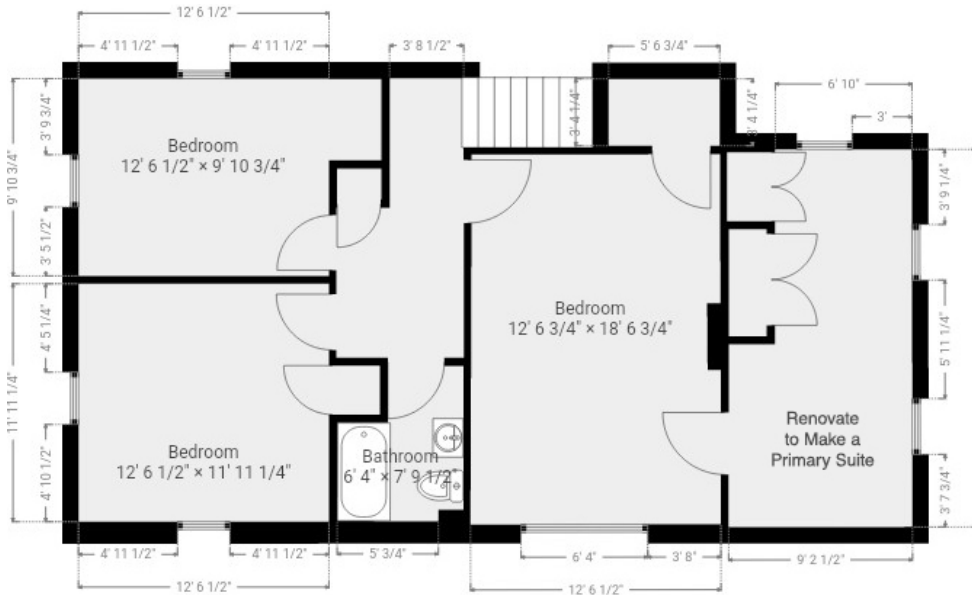
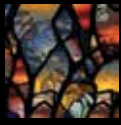
**LAURA@MYMOSAICREALTY.COM**

### DIRECTIONS

FROM DOWNTOWN ASHEVILLE. Head south on Biltmore Avenue. Turn left onto Caledonia Road. Turn right, then left, to stay on Caledonia. Turn right onto Forest Hill Drive. Turn left onto Kenilworth Road. Turn right onto Chiles Avenue. Turn right onto Westchester. The destination is on the left.



MAIN LEVEL



## UPPER AND BASEMENT LEVELS