



30 AND 32 VIEW STREET

Beautifully Crafted Duplex with Strong Income Potential



MOSAIC
COMMUNITY LIFESTYLE REALTY

2 Units, Each with 2 Bedrooms, 1.5 Bathrooms
2,664 Total SF | Duplex

30 AND 32 VIEW STREET ASHEVILLE, NC 28804

2 Units, Each with 2 Bedrooms, 1.5 Bathrooms
2,664 Total SF | Duplex

FEATURES

Duplex built in 2024

Steady rental income at \$1850 per month per unit

Long-range mountain views

Covered front entry

Open-concept layout

Kitchen has ample cabinets

Granite countertops throughout

Stainless steel appliances

Large pantry

9-Foot ceilings

Rear deck

Hardwood flooring

Walk-in closets in the bedrooms





MOSAIC
COMMUNITY LIFESTYLE REALTY

46 Orchard Street, Suite 100, Asheville, NC 28801
WWW.MYMOSAICREALTY.COM





MOSAIC
COMMUNITY LIFESTYLE REALTY

46 Orchard Street, Suite 100, Asheville, NC 28801
WWW.MYMOSAICREALTY.COM

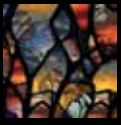




MOSAIC
COMMUNITY LIFESTYLE REALTY

46 Orchard Street, Suite 100, Asheville, NC 28801
WWW.MYMOSAICREALTY.COM





Built in 2024, this beautifully crafted duplex blends modern finishes with strong income potential in a highly desirable location just minutes from downtown Asheville. Each unit offers 2 spacious bedrooms and 1.5 bathrooms, thoughtfully designed with 9-foot ceilings, rich hardwood floors, and an abundance of natural light throughout. The stylish kitchens feature granite countertops, stainless steel appliances, and ample cabinetry, flowing seamlessly into open living and dining areas ideal for everyday comfort or entertaining. Each unit enjoys a covered front entry, as well as a private back deck showcasing long-range mountain views. With separate utility metering, ample off-street parking, and a proven rental history generating \$1,850 per month per unit, this property is an exceptional opportunity for investors or owner-occupants seeking additional income. Modern construction, low maintenance, and close proximity to Asheville's vibrant dining, shopping, and cultural scene make this duplex a standout investment.

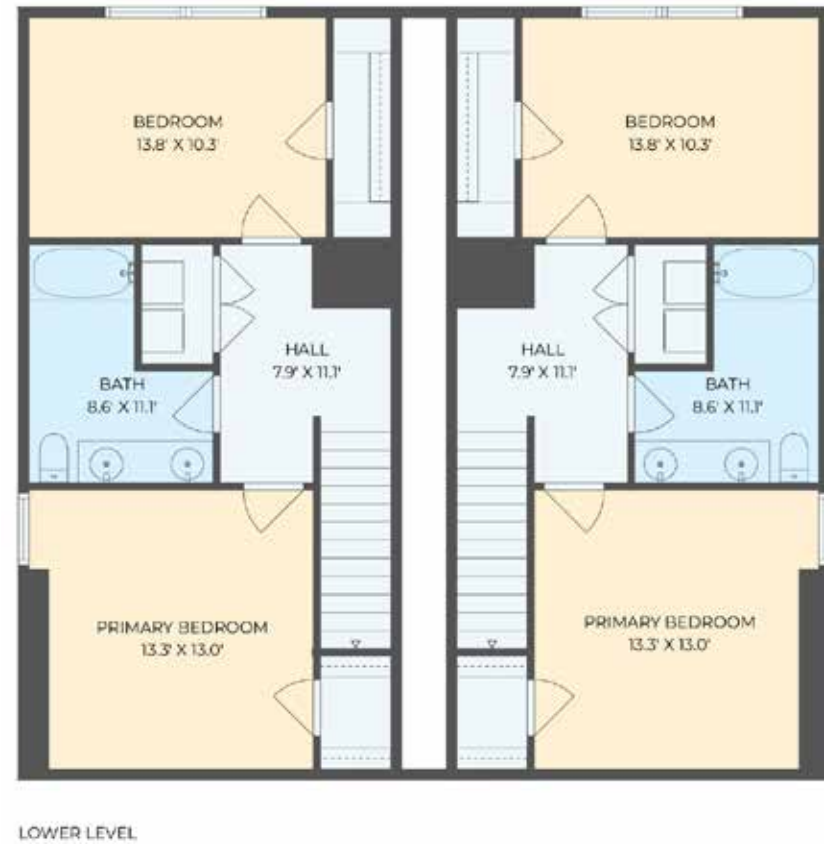
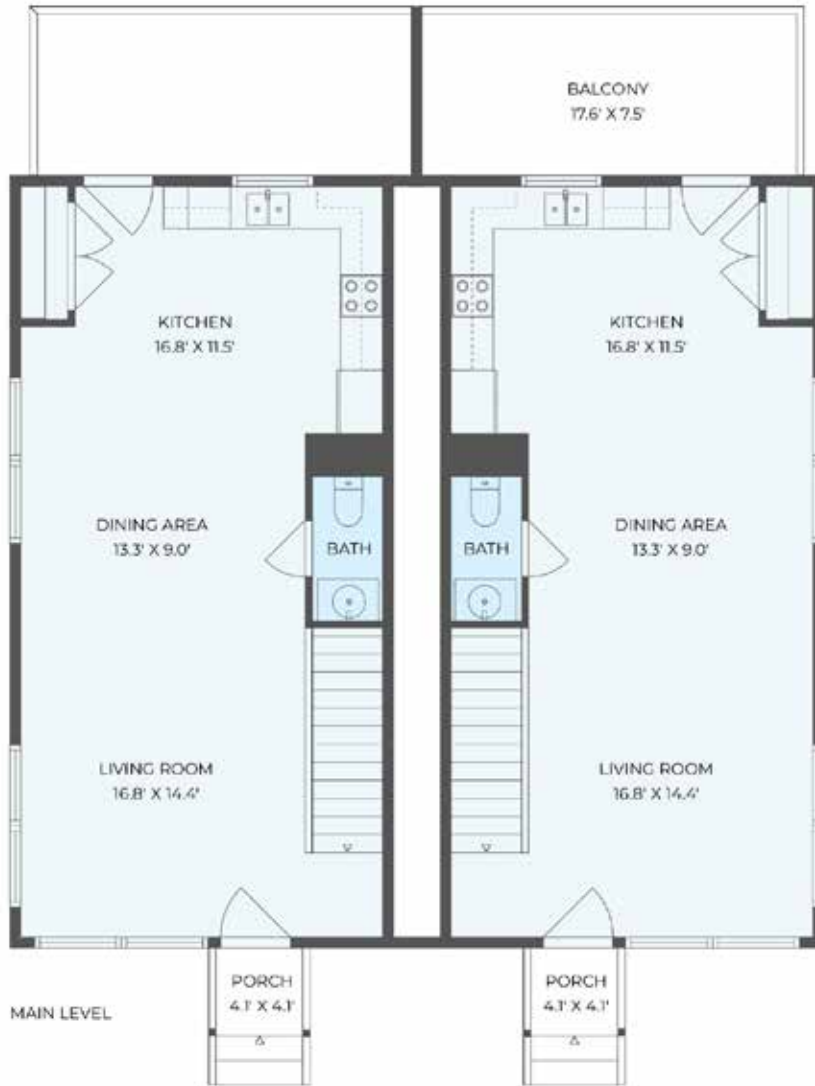


For more information, please contact:

ERIC ALBEE
828-712-9395
ERIC@MYMOSAICREALTY.COM

DIRECTIONS

FROM DOWNTOWN ASHEVILLE: GPS and map apps accurately guide you to the property.



FLOOR PLANS