



186 VERMONT AVENUE

1950s Rancher on a Quarter Acre in Walkable West Asheville



MOSAIC
COMMUNITY LIFESTYLE REALTY

4 Bedrooms, 2 Bathrooms
1,770 SF • 0.25 Acre
MLS #4130115



INFO

186 Vermont Avenue, Asheville, NC 28806

4 Bedrooms, 2 Bathrooms

1,770 SF • 0.25 Acre

MLS #4130115

FEATURES

- Mid-century rancher on a quarter-acre lot in a fantastic West Asheville location
- Steps away from West Asheville Park and only a short stroll to Haywood Road
- Foyer is welcoming, with warm wood paneling and two cabinets flanking the casement window
- Large bay window in living room brings in plenty of natural light
- Brick fireplace has wall-to-wall built-ins and casement windows on each side
- Eat-in kitchen with deep-silled, louvered window over sink and stylish black-and-white linoleum
- Pantry off the kitchen offers extra storage space; countertop area would make a great beverage station
- Arched doorways and refinished oak floors add period charm
- Private primary bedroom, currently used as a family room, has loads of vintage style, an ensuite full bathroom and a private deck
- Renovated shared bathroom exudes retro style with a tiled shower, a penny-tiled floor, and a floating vanity with vessel sink



Cute, Covered Front Porch

- Daylight basement with high ceiling and existing plumbing is ready for finishing
- Storage abounds with lots of closets, an unfinished basement, and a detached two-car garage
- Concrete path from patio to garage
- Plenty of parking in the driveway — a West Asheville rarity!
- Large front and back yards
- Mature magnolia in the backyard provides beauty, fragrance and shade on a summer's day
- Covered porches and an incredible patio make this home perfect for entertaining



Retro Foyer Area



Front Entryway and Hallway to Bedrooms



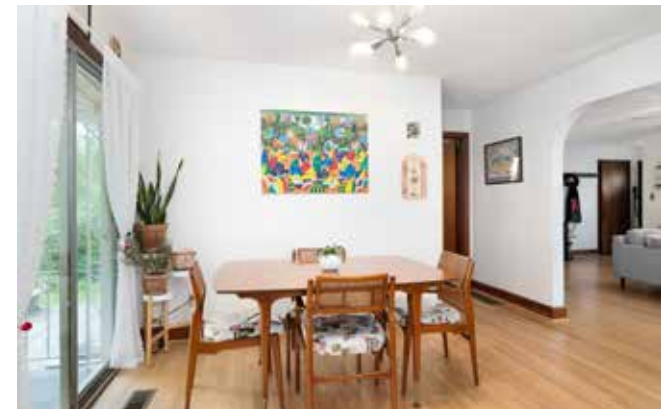
Living Room with Bay Window



Refinished Original Oak Flooring



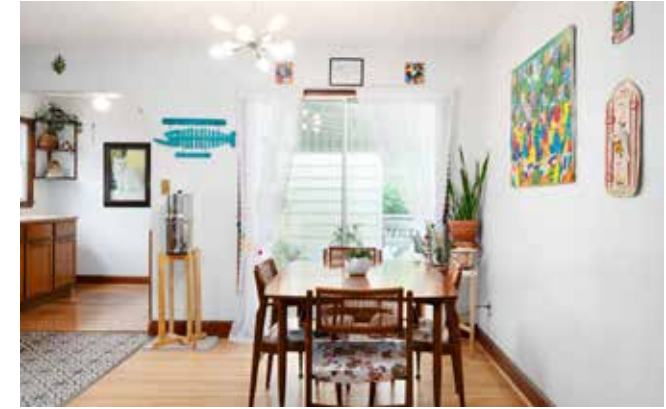
Brick Fireplace with Built-ins



Dining Area between Living Room and Kitchen



Kitchen Boasts Stainless Steel Appliances and Stylish Flooring



Dining Area with Sliding Door to Rear Porch



Loads of Storage



Deep-Silled Window over Kitchen Sink



Pantry for Extra Storage • Great Spot for a Coffee Bar



Hallway to Primary Suite/Family Room



Primary Bedroom, Currently Used as Family Room, with Private Deck



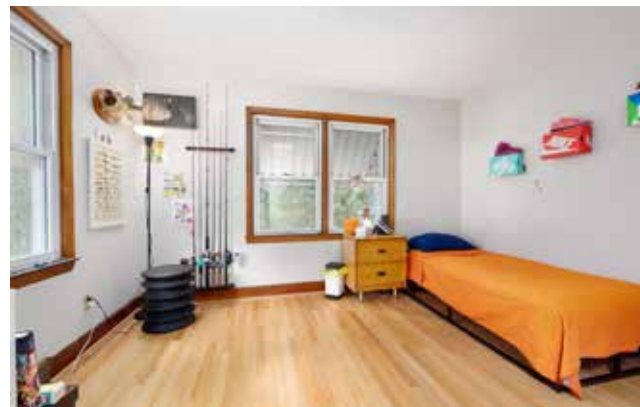
Vintage Charm in the Ensuite Bathroom



Bedrooms Are Light and Bright ...



... with Gleaming Oak Floors ...



... and Classic, Green-and-White Window Awnings



Double Windows Bring in Great Natural Light



Good Closets and Storage throughout the Home



Shared Bathroom Has a Tiled, Walk-in Shower ...



... and a Mid-Century Floating Vanity



Bedroom Three, Currently Used as an Office



Huge Unfinished Basement with Windows



Use for Storage or Finish for More Living Space



Great Yard with Lots of Space for Outdoor Entertaining



Covered Back Porch, Perfect for Al Fresco Dining



Path Leads from Patio to Detached Garage



Detached Two-Car Garage



Driveway Offers Tons of Parking

186 VERMONT AVENUE

1950s Rancher on a Quarter Acre in WAVL

Asheville, NC 28806



Large, Level, Quarter-Acre Lot with Mature Trees

Welcome to 186 Vermont Avenue, a charming 1950s rancher on one of West Asheville's most coveted streets. Steps away from West Asheville Park and just a short stroll to the vibrancy of Haywood Road, this location is truly hard to beat. Sitting on a quarter-acre lot, this home features large front and back yards, covered porches, and an incredible patio, perfect for entertaining. Private primary suite exudes vintage style and features an ensuite bathroom and private deck. The living room's large bay window allows light to flow into the generously sized eat-in kitchen. Arched doorways, refinished original oak floors, and a renovated bathroom with a tiled shower and mid-century vanity add to the unique character of this property. Home has tons of storage with many closets, an unfinished basement, and a detached two-car garage. High ceiling and existing plumbing in the daylight basement provide excellent potential for finishing, if desired. This home is special — come take a look today!



For more information, please contact:

CHRIS FINDLEY

828.242.9775

CHRIS@MYMOSAICREALTY.COM

DIRECTIONS

FROM HAYWOOD ROAD: Turn onto Vermont Avenue. Head all the way down Vermont Avenue, and the house will be the second-to-last house on the left, before you get to Davenport Road and the park.



FLOOR PLANS

