



MOSAIC
COMMUNITY LIFESTYLE
REALTY

NORTH ASHEVILLE



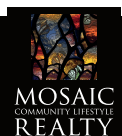
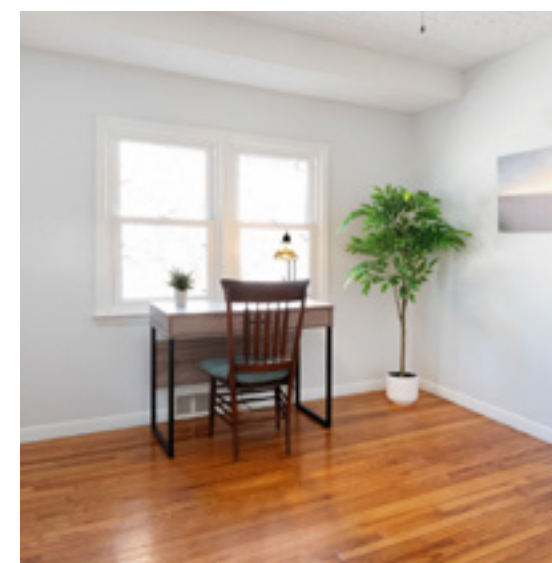
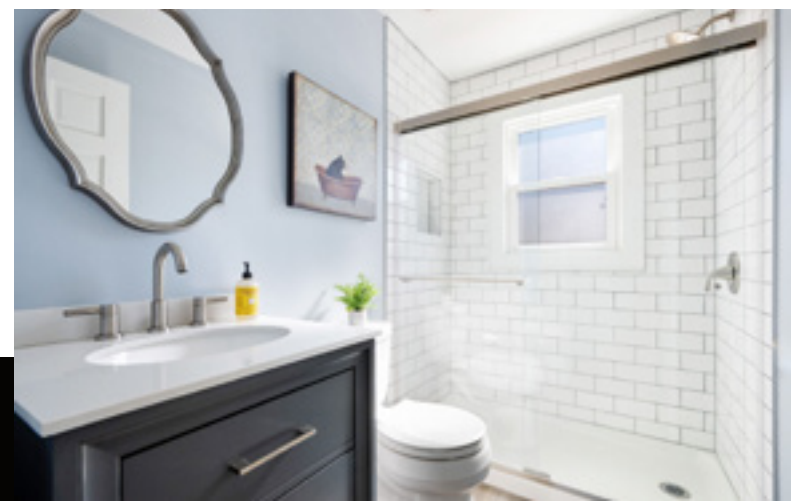
3 VALLEY LANE | ASHEVILLE, NC 28804



FANTASTIC ONE-LEVEL LIVING IN NORTH ASHEVILLE'S DESIRABLE BEAVERDAM VALLEY!

Situated on a beautiful 0.43-acre lot tucked away in the valley, this home offers an ideal blend of comfort, quiet, and convenience. Just minutes to Beaver Lake and Bird Sanctuary walking trails, the North Asheville Library, plus groceries and dining along Merrimon Avenue. Approximately 10 minutes to downtown Asheville's shopping, arts, and restaurants, and about 5 miles to the Blue Ridge Parkway for endless outdoor adventure. This home features a stunning kitchen with an oversized eat-in island, built-ins, and abundant prep space. Its spacious primary suite has beautiful hardwood floors and an updated bathroom with a tiled walk-in shower. Property includes an inviting deck, a generous yard, ample off-street parking, an outdoor shed, and 500+ SF for basement storage.

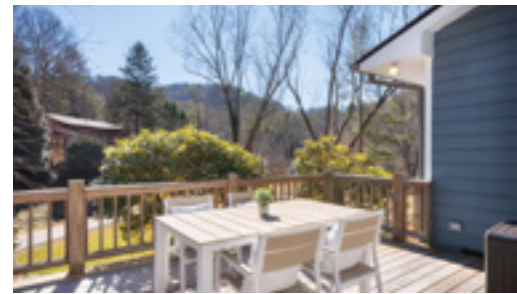
3 BD | 2 BA | 1,413 + 565 SF BASEMENT | 0.43 ACRE | MLS #4350642



MEGAN SHOOK
828-450-6797
MEGAN@MYMOSAICREALTY.COM

3 VALLEY LANE

ASHEVILLE, NC 28804



3 VALLEY LANE | ASHEVILLE, NC 28804

3 BEDS | 2 BATHS | 1,413 SF + 565 SF BASEMENT | 0.43 ACRE | MLS #4350642

FEATURES

- Fantastic one-level living on a beautiful 0.43-acre lot tucked away in North Asheville's Beaverdam Valley
- Just minutes to the Beaver Lake and Bird Sanctuary walking trails, the North Asheville public library, The Country Club of Asheville and its award-winning 18-hole golf course, and all of the groceries and restaurants along Merrimon Avenue nearby
- Approximately 10 minutes to downtown Asheville and all of its shopping, art, and restaurant offerings; 5 miles to the Blue Ridge Parkway trails for outdoor adventure
- Tucked back and quiet location—near the end of the road with a handful of neighbors and very little auto traffic
- One-level living with stunning kitchen and updated primary bath; fantastic outdoor deck for hosting and relaxing
- Kitchen includes an oversized eat-in island, plenty of built-ins, and an abundance of space for the talented chef or everyday cook
- Beautiful hardwood floors in home; decorative fireplace in living room (not operable)
- Spacious primary suite includes a bathroom with a beautiful, tiled walk-in shower with a glass door
- Open floor plan for living/dining/kitchen areas
- 2024 architectural shingle roof, 2025 electric panel, 2021 water heater
- Spacious front yard for play or gardening; outdoor shed provides even more storage than the basement already offers
- Spacious off-street parking area is large enough to accommodate multiple cars, recreation vehicles, etc.
- Basement provides over 500 SF of storage space plus laundry area
- Asheville City Schools—closest elementary school is less than two miles away

DIRECTIONS

FROM DOWNTOWN ASHEVILLE: Take Charlotte St. north toward the Grove Park Inn. Turn left on Edwin Place (Edwin turns into Kimberly Avenue). Turn right on Beaverdam Rd. Turn right on Spooks Branch Rd. Turn left on Valley Lane; home will be on your left.



3 VALLEY LANE | ASHEVILLE, NC 28804

3 BEDS | 2 BATHS | 1,413 SF + 565 SF BASEMENT | 0.43 ACRE | MLS #4350642

FLOOR PLANS

