



# 103 TRUMPET LANE

Large-Living Townhome in Desirable Southside Village



**MOSAIC**  
COMMUNITY LIFESTYLE REALTY

**5 Bedrooms, 3.5 Bathrooms**  
**2,935 SF • Townhome**  
**MLS #4342648**



**103 TRUMPET LANE  
ASHEVILLE, NC 28803**

5 Bedrooms, 3.5 Bathrooms  
2,935 SF · Townhome  
MLS #4342648

**FEATURES**

Repainted interior, including garage

Repainted upper and lower decks, including hand rails and steps

Enhanced water drainage system, including installation of new catch basin in front and redirecting water away from foundation through new PVC piping

Enhanced exterior landscaping by adding river rock to front, side and back of house

Enhanced exterior landscaping in back and around crawl space entrance

Strengthened crawl space and foundation with new insulation, encapsulation humidifiers and helical support braces (work by Carolina Foundation)

Installed whole-house water filtration system

Hardwood floors throughout much of the main level





**MOSAIC**  
COMMUNITY LIFESTYLE REALTY

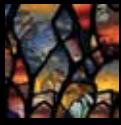
46 Orchard Street, Suite 100, Asheville, NC 28801  
[WWW.MYMOSAICREALTY.COM](http://WWW.MYMOSAICREALTY.COM)











**MOSAIC**  
COMMUNITY LIFESTYLE REALTY

46 Orchard Street, Suite 100, Asheville, NC 28801  
[WWW.MYMOSAICREALTY.COM](http://WWW.MYMOSAICREALTY.COM)





This beautiful townhome in the desirable Southside Village on Brown Mountain truly lives like a home, sharing only a garage wall and offering lovely mountain views from its elevated site. Experience a sense of grandeur with vaulted ceilings spanning the main level. This floor features two bedroom suites, with the primary suite opening to a gorgeous screened porch and deck with private treetop views. The expansive, east-facing kitchen is both inviting and functional, boasting a vaulted ceiling, a large island, and ample cabinetry. The finished lower level provides three additional bedrooms, two bathrooms, abundant closets, and a large covered deck for relaxing. With roomy walk-in closets, a convenient laundry/mudroom connecting to the garage, and an unheated bonus space perfect for a workshop or extra storage, this home offers space and convenience with just over 2,900 square feet of living space.

 **VIRTUAL TOUR**



For more information, please contact:

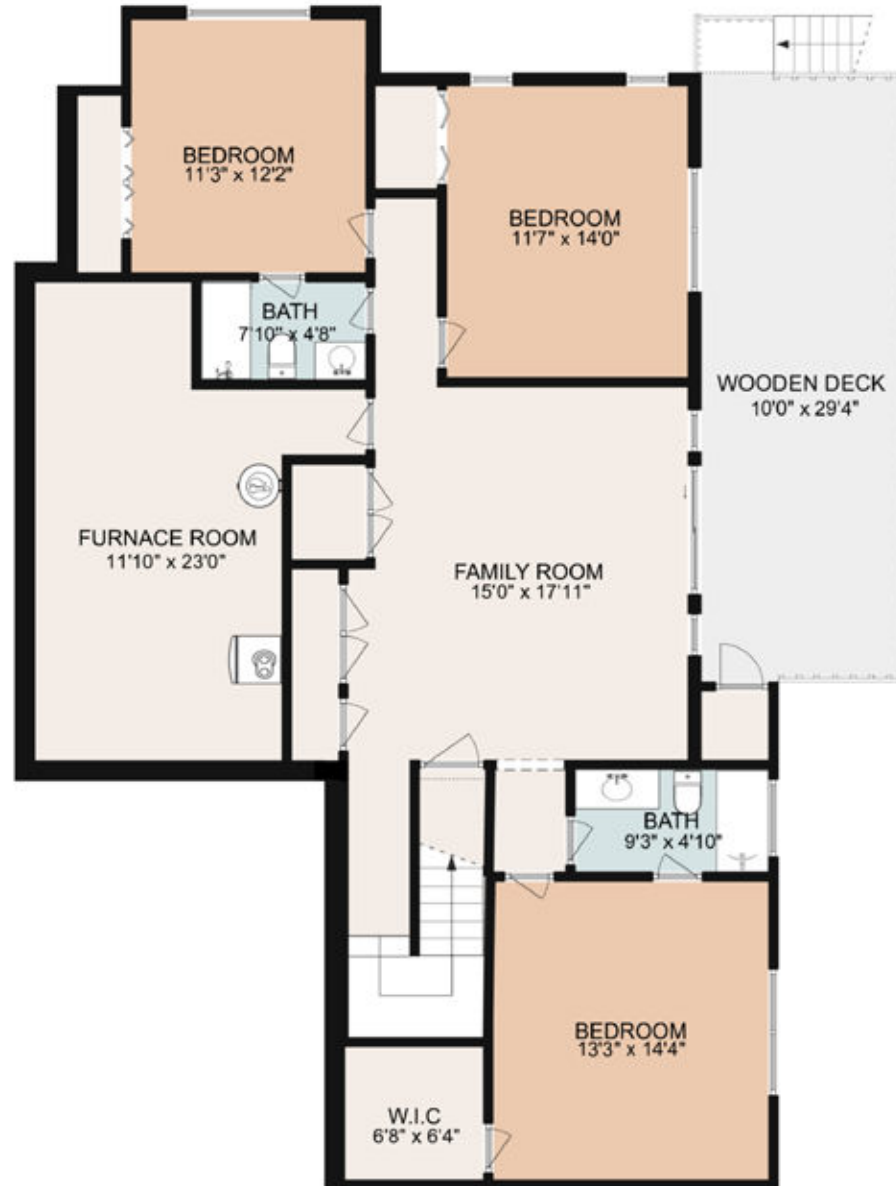
**ANTHONY GUTHMILLER**  
**828-333-8312**  
[ANTHONYG@MYMOSAICREALTY.COM](mailto:ANTHONYG@MYMOSAICREALTY.COM)

## DIRECTIONS

FROM DOWNTOWN ASHEVILLE: Take Hendersonville Road south. Turn left on Mills Gap Road. Cross over Sweeten Creek Road and the Southside Village development will be on your right. Go up the hill to Trumpet Lane and turn right. Home is on your right at 103 Trumpet Lane.



MAIN LEVEL



LOWER LEVEL