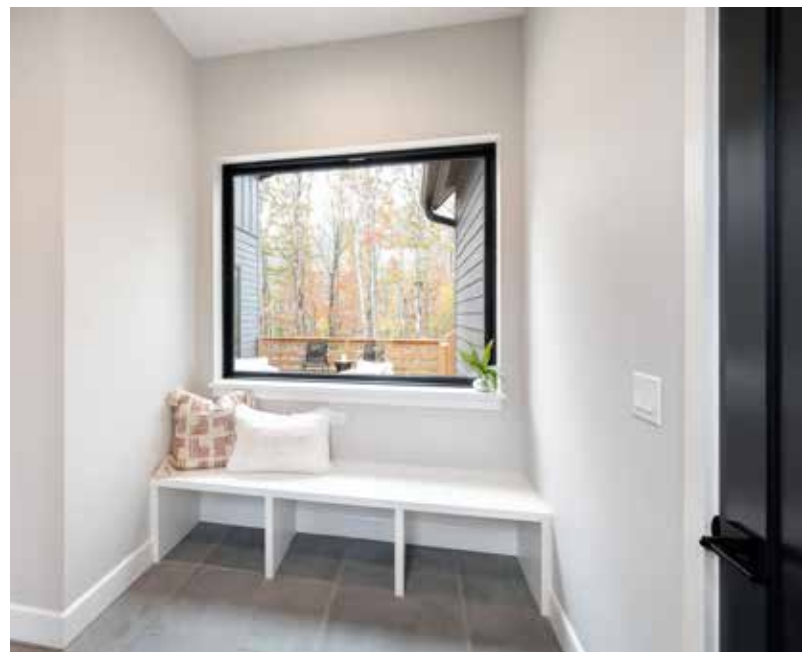




MOSAIC
COMMUNITY LIFESTYLE
REALTY

FAIRVIEW



25 TED LINN DRIVE | FAIRVIEW, NC 28730

25 TED LINN DRIVE
FAIRVIEW, NC 28730



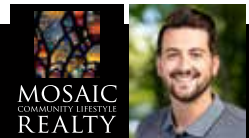
FAIRVIEW



NESTLED IN THE HIGHLY SOUGHT-AFTER CLEARVIEW COMMUNITY

... this incredible new-construction home is the final opportunity to own in one of the area's most welcoming and connected neighborhoods. Clearview is known for its inviting atmosphere, where neighbors gather and daily life is centered around walkability, scenic surroundings, and a true sense of community. Ideally located just minutes to both Asheville and local Fairview favorites like Whistle Hop Brewing and Cultivated Cocktails, it offers the perfect blend of privacy and convenience. Less than half a mile off of Highway 74, this property is ideal for easy access to Asheville, South Asheville and Black Mountain. This thoughtfully designed luxury build offers uniquely chosen finishes and flexible living space, ideal for families and empty-nesters alike. A beautiful bluestone entryway creates a striking first impression, leading into an open main level with 10-ft ceilings, wide-plank hardwoods and a dramatic floor-to-ceiling rolled-steel fireplace. The chef's kitchen features custom cabinetry, quartz countertops, and high-end premium appliances. The main-floor primary bedroom offers a vaulted ceiling and a beautifully appointed ensuite bath, while multiple living areas and a private, spacious, gently rolling yard complete this exceptional home. Truly a special home and community! Agent is part owner.

4 BEDS | 3.5 BATHS | 3,280 SF | 0.83 ACRE



WILSON HOOD
828-545-0551
WILSON@MYMOSAICREALTY.COM

25 TED LINN DRIVE

FAIRVIEW, NC 28730



25 TED LINN DRIVE | FAIRVIEW, NC 28730

4 BEDS | 3.5 BATHS | 3,280 SF | 0.83 ACRE

FEATURES

LOCATION

- Situated in one of Fairview's most desirable neighborhoods
- Last available home in the Clearview community
- Incredible neighborhood views, walking trails, and community gathering area

LOT FEATURES:

- 0.83-acre lot, gently rolling rear yard
- Beautiful front landscaping and flat/useable front yard space
- Excellent privacy and mature trees

GENERAL FEATURES

- Uniquely curated new construction with contemporary design
- 3,280 SF of finished space
- 4 bedrooms, 3.5 bathrooms
- Finished flex space with exterior access
- Beautiful landscaping and incredible curb appeal

UNIQUE ARCHITECTURAL DETAILS

- Custom-designed entry dogtrot with:
 - » Bluestone flooring
 - » Floor-to-ceiling windows
 - » Finished powder room

MAIN LEVEL

- 10-foot ceilings
- Bespoke details and finishes
- 7.5-inch-wide plank hardwood flooring
- Floor-to-ceiling rolled steel fireplace
- Chef's kitchen featuring:
 - » High-end appliances
 - » Panel refrigerator
 - » Custom cabinetry
 - » Quartz countertops
 - » Direct access to private deck
- Vaulted primary suite with:
 - » Spa-inspired ensuite bathroom
 - » Dedicated laundry space

SECOND LEVEL

- Two spacious bedrooms
- Walk-in closets and work areas
- Beautifully finished shared full bath

BASEMENT LEVEL:

- Spacious bonus room
- Fourth bedroom
- Full bathroom
- Ample storage with potential for finishing

DRIVING DIRECTIONS

FROM ASHEVILLE: Follow I-240 E and continue for about 3.4 miles. Keep right to follow US-74 ALT E, continuing for 7.4 miles toward Blue Ridge Parkway. Next, take a slight left onto Village Road, then turn left onto Garren Creek Road. After 0.9 mile, make a slight right onto Ted Linn Drive. House is the fifth home on the right.



25 TED LINN DRIVE | FAIRVIEW, NC 28730

4 BEDS | 3.5 BATHS | 3,280 SF | 0.83 ACRE

MAIN LEVEL

