



51 SUGAR HILL DRIVE

Spacious, Light-Filled Home on 1.5 Acres in Sugar Hill Estates



MOSAIC
COMMUNITY LIFESTYLE REALTY

3 Bedrooms, 2 Full + 2 Half Bathrooms
2,170 SF • 1.55 Acres
MLS #4243411

INFO

51 Sugar Hill Drive
Weaverville, NC 28787
3 Bedrooms, 2 Full + 2 Half Bathrooms
2,170 SF • 1.55 Acres
MLS #4243411

FEATURES

- Situated on 1.55 serene acres in Weaverville's Sugar Hill Estates
- Enjoy the tranquility of mountain living with the convenience of being just minutes away from Weaverville shopping and dining; only a 25-minute drive to Asheville
- Private and peaceful location surrounded by lush greenery, native landscaping, and winter mountain views
- A spacious floor plan with amazing natural light throughout
- Living room with hardwood floors features a gas log fireplace and elegant built-in shelving
- Enjoy special gatherings in the formal dining room
- Large dining area in the kitchen for everyday casual dining
- Easily access the back deck from the kitchen
- Well-equipped kitchen with ample storage, granite countertops and a breakfast bar
- Stainless steel appliances include a gas oven/range
- Two convenient half baths, one each on the main and lower levels
- Highlighted by a tray ceiling, the primary bedroom has a walk-in closet, and ensuite bathroom
- Two spacious guest bedrooms and a shared bath complete the upper level



Covered Front Porch

- Handy upper-level laundry area is just off the primary bathroom
- Lower-level bonus room features a built-in Murphy bed and a half bath
- Enjoy the scenic natural setting from the front porch — or gaze at the stars from the back deck
- Major deck repairs were completed in 2024
- The well supplies a 1500-gallon above-ground water reserve tank that is located in the garage
- Garage functions as a one-car garage with plenty of storage space, even with the water tank in place
- New HVAC in 2025
- Roof replaced in 2020
- Wonderful, move-in-ready, full-time home or vacation getaway



Living Room (Virtually Staged)



Entrance



Stylish and Spacious Living Room



Cozy Gas Fireplace and Built-in Storage



Hardwood Flooring and Great Light Throughout



Convenient Main-Level Powder Room



Ample Cabinet Storage and a Pantry in the Kitchen



Breakfast Nook off Kitchen (Virtually Staged)



Breakfast Nook/Dining Area with Access to Deck



Granite Counters and Stainless Appliances



Gas Oven/Range with Exhaust Hood



Dining Room (Virtually Staged)



Primary Bedroom (Virtually Staged) with a Tray Ceiling



Primary Walk-in Closet with a Window



Spacious Ensuite Bathroom



Guest Bedroom One (Virtually Staged)



Second Guest Bedroom with Ceiling Fan



Upper-Level Guest Bathroom



Basement Bonus Room with Built-in Murphy Bed



Lower-Level Half Bathroom



There's Also a Large Garage with Plenty of Storage



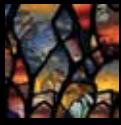
Side View of Home Showing Garage/Drive



Nicely Landscaped



Enjoy the Seasonal Views from the Back Deck



MOSAIC
COMMUNITY LIFESTYLE REALTY

46 Orchard Street, Suite 100, Asheville, NC 28801 tel : 828.707.9556 fax: 800.553.1491

WWW.MYMOAICREALTY.COM



Private and Peaceful



Paved Driveway • Private Setting



Great Outdoor Spaces to Enjoy



Welcoming Front Porch with Winter Mountain Views



Rear View Shows Deck • Two Easy Steps to the Yard

51 SUGAR HILL DRIVE

Spacious, Light-Filled Home on 1.5 Acres

Weaverville, NC 28787



Beautiful Weaverville Setting

Experience mountain living in Sugar Hill Estates, minutes to Weaverville shopping and dining; only 25 minutes to downtown Asheville. Spacious, light-filled home on 1.55 peaceful and private acres surrounded by greenery and winter mountain views. Living room features wood floors, a gas fireplace, transom windows and an elegant built-in bookshelf. Spacious eat-in kitchen with granite countertops, breakfast bar, and gas stove. Formal dining room and main-level half bath add functionality. Upper-level primary bedroom showcases a tray ceiling, walk-in closet, and ensuite bath. Convenient laundry area off the primary bathroom. Two spacious guest bedrooms and a shared bath complete the upper level. The lower-level bonus room includes a built-in Murphy bed and another half bath. Enjoy the beauty of nature on the front porch or back deck. Move-in-ready, full-time home or vacation getaway. New HVAC in 2025. Roof replaced in 2020. 1500-gallon above-ground water reserve tank in garage. No HOA.



For more information, please contact:

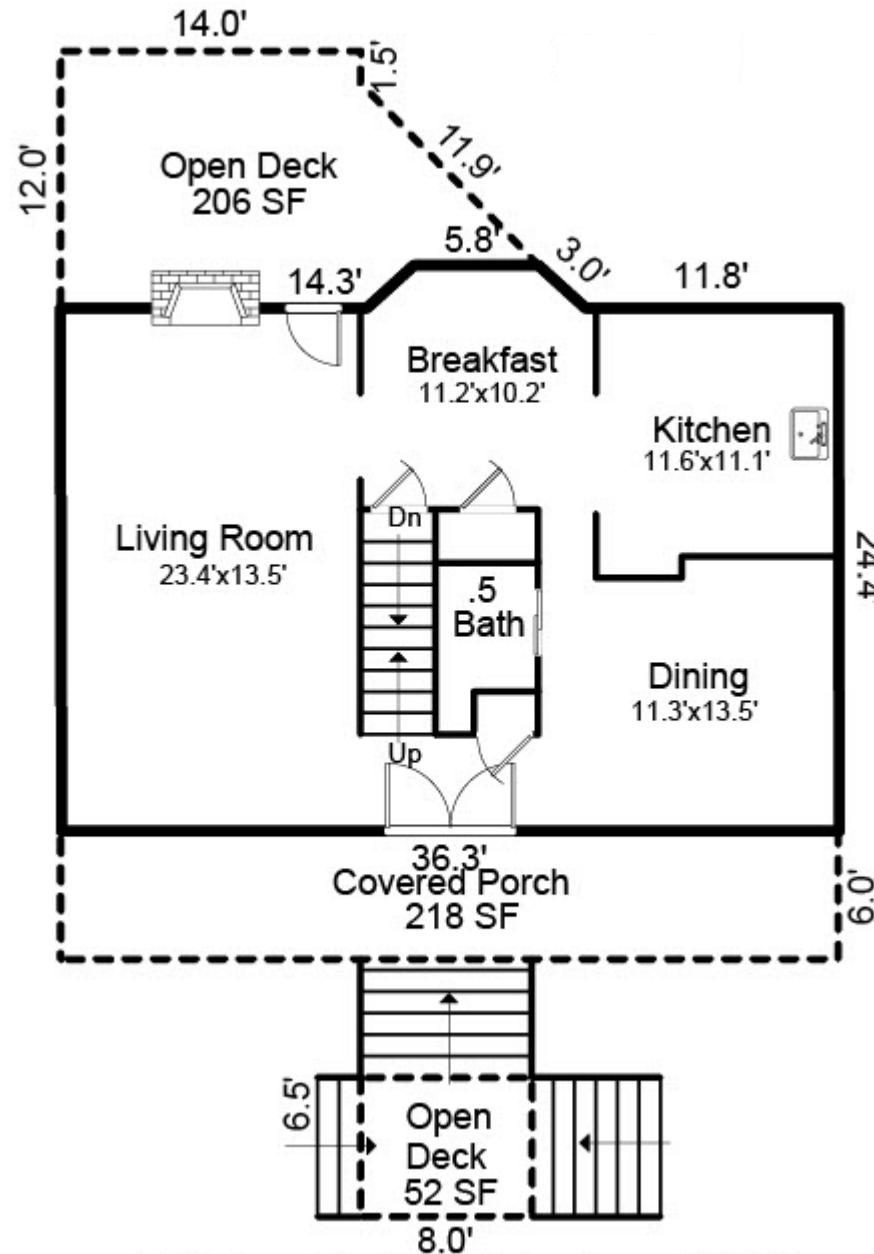
CAROL MARIN

828.545.2712

CAROL@MYMOSAICREALTY.COM

DIRECTIONS

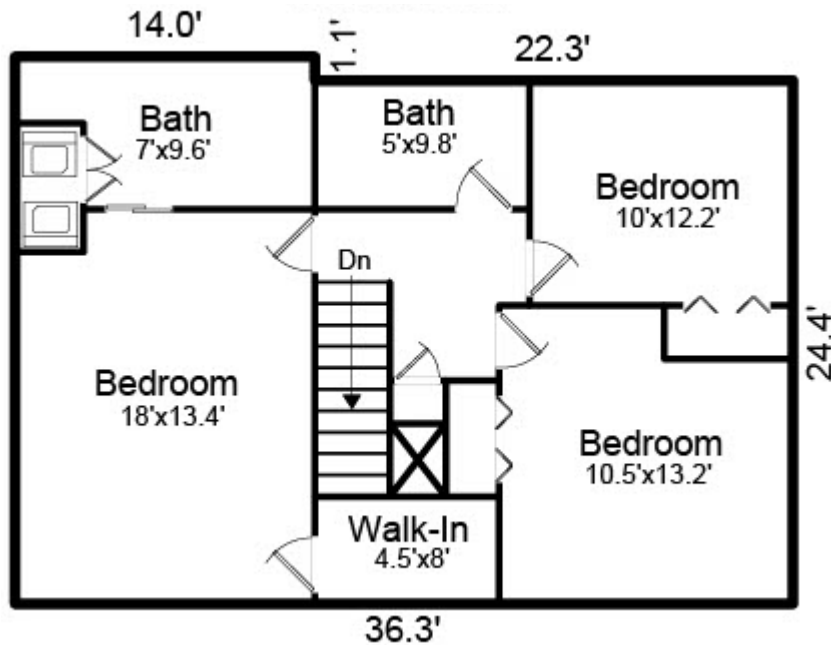
FROM DOWNTOWN ASHEVILLE: Take I-240 to the US-19/US-23/ US-70/I-26 ramp toward Weaverville. Take exit 15 Jupiter/Barnardsville and turn right onto Highway 197 (Barnardsville Highway). Go about 3.8 miles and turn right onto Sugar Creek Road. Go 1.3 miles and turn left onto Sugar Hill Drive. Bear right at the fork. 51 Sugar Hill is on the right.



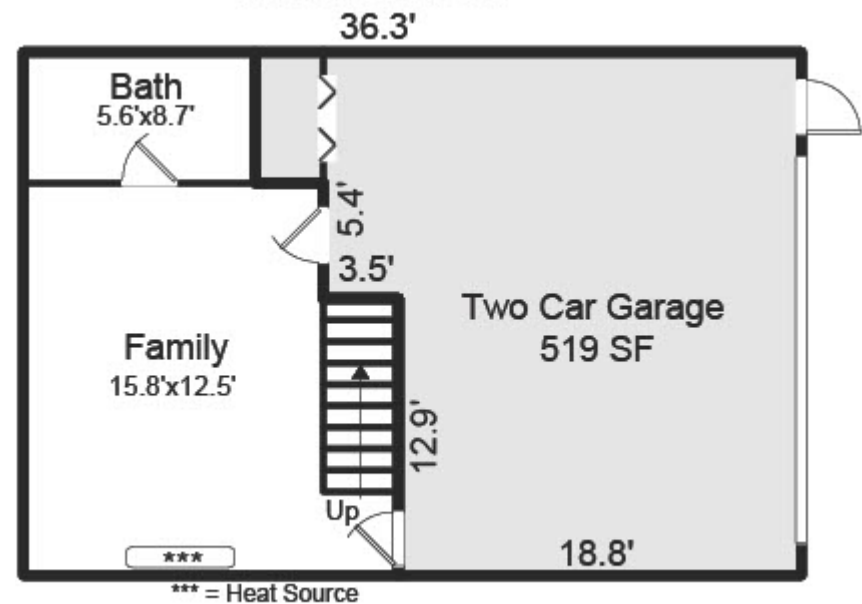
MAIN LEVEL



UPPER LEVEL



BASEMENT LEVEL



UPPER AND BASEMENT LEVELS