



48 STRATFORD ROAD

One-Level Living on 1.1 Acres in Lakeview Park



3 Bedrooms, 2.5 Bathrooms
2,594 SF • 1.1 Acres
MLS #4244340

INFO

48 Stratford Road, Asheville, NC 28804

3 Bedrooms, 2.5 Bathrooms

2,594 SF • 1.1 Acres

MLS #4244340

FEATURES

- One-level living in a sprawling rancher on a 1.1-acre property in North Asheville's coveted Lakeview Park
- Located minutes to Beaver Lake and its bird sanctuary, The Country Club of Asheville and its 18-hole golf course, plus Merrimon Avenue and its plentiful offerings of local restaurants, groceries, and shops
- Approximately three miles to thriving downtown Asheville and its local art galleries, restaurants, and shopping
- Ideal neighborhood for walking/biking to trails and amenities
- Three bedrooms, two baths — plus two living spaces and a beautiful screened-in porch
- Living room is open to dining space and features a lovely wood-burning fireplace and stone bench, plus built-in shelves, and a stunning pine ceiling with skylights
- Kitchen includes an eat-in island, a bay window, built-in microwave and wall oven, plus a pantry closet
- Private bedroom wing features all three bedrooms, including a true primary suite with a private deck that looks into the beautiful backyard
- Primary suite includes two cedar-lined closets; primary bath has shower/tub combo and a natural wood vanity
- Bonus room off the kitchen includes a wet bar and a sunken living space ideal for an office or green room for plants — tons of light with three skylights and floor-to-ceiling windows
- Basement includes a massive two-car tandem garage (1,423 SF) that the seller used for their five vehicles!



Numerous Outdoor Spaces For Hosting (Virtually Staged)

- Oversized garage includes plenty of workshop space and multiple storage areas in the basement
- Spacious laundry room in basement, however option for main level stackable laundry in closet off the kitchen
- Fantastic outdoor space in this 1.1 acre lot includes level backyard surrounded by trees that provide in-town privacy
- Beautiful stone side patio includes fire ring area and plenty of space for outdoor dining with friends and neighbors
- Abundance of storage on property includes outdoor shed in side yard
- Beautiful mature landscaping includes flowering trees (Japanese maple and red bud), professionally landscaped mulch beds
- 2021 architectural shingle roof and new skylights
- Asheville City Schools district



Two Living Rooms: One with a Wood-Burning Fireplace ...



... a Stunning Pine Ceiling and Skylights, Plus ...



... Built-in Bookshelves and a Tile Floor (Virtually Staged)



Inviting Dining Space with a Bay Window (Virtually Staged)



The Other Living Room ...



... Is a Hangout Near the Kitchen (Virtually Staged)



Sunken Space Includes Skylights



Perfect Space to Work from Home (Virtually Staged)



Wet Bar and Exterior Access in the Adjacent Bonus Room



Pine Ceiling Extends Into the Kitchen



Eat-in Island and Granite Countertops



Peek into the Second Living Room



Lovely Green Cabinetry and Stainless Steel Vent Hood



Pantry Closet and Cabinets



All Bedrooms Have Hardwood Floors, Fans (Virtually Staged)



Light and Bright (Virtually Staged)



Hall Bath Has Shower/Tub Combo

48 STRATFORD ROAD
One-Level Living on 1.1 Acres in Lakeview Park
Asheville, NC 28804



Spacious Primary Suite with Its Own Deck (Virtually Staged)



Two Cedar Closets in Primary Suite



Ensuite Bathroom Has Wood Vanity, Shower/Tub Combo



Large Basement Laundry Room



Massive Basement Garage



Ideal for Car Lovers or Workshop Space



Plenty of Storage on Property



Outside the Garage Is a Spacious Gravel Driveway

48 STRATFORD ROAD
One-Level Living on 1.1 Acres in Lakeview Park
Asheville, NC 28804



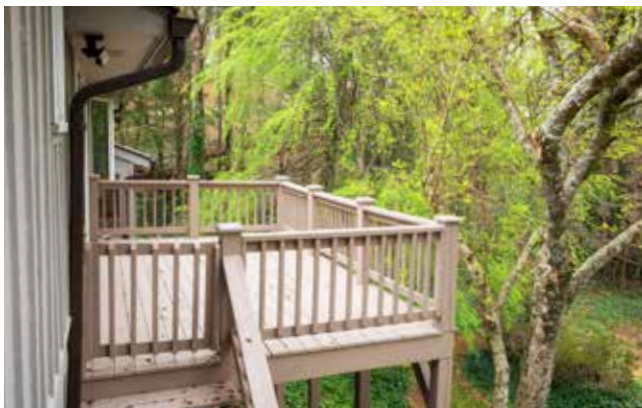
Screened-in Porch off the Dining Area



Built-in Fire Ring • Stone Patio



Back Deck Looks Out Into Private Backyard



Perfect Space for Hosting Friends



City Living with Privacy

48 STRATFORD ROAD
One-Level Living on 1.1 Acres in Lakeview Park
Asheville, NC 28804



Welcome Home



1.1 Acre Property



Beautiful and Mature Landscaping



Even More Storage in Outdoor Shed



Level Outdoor Spaces for Play and Gardening



2021 Architectural Shingle Roof and Skylights

Fantastic opportunity for one-level living in North Asheville's Lakeview Park, on a spacious and private 1.1-acre property, just steps to Beaver Lake's walking trails, The Country Club of Asheville, and only about three miles to downtown Asheville. This lovely home includes a massive basement garage ideal for a workshop/ car storage — or to expand the finished square footage of the home. Interior features include a stunning pine ceiling and skylights in the living and dining room, multiple dens/living rooms, a spacious and bright kitchen, plus a private primary suite with its own deck. Level and private backyard offers plenty of space to play or garden, and a lovely screened-in porch and outdoor stone patio with fire pit await company. This home is truly an opportunity to either move in now and enjoy it, or remodel it to suit your preferences. Asheville City Schools district.



For more information, please contact:

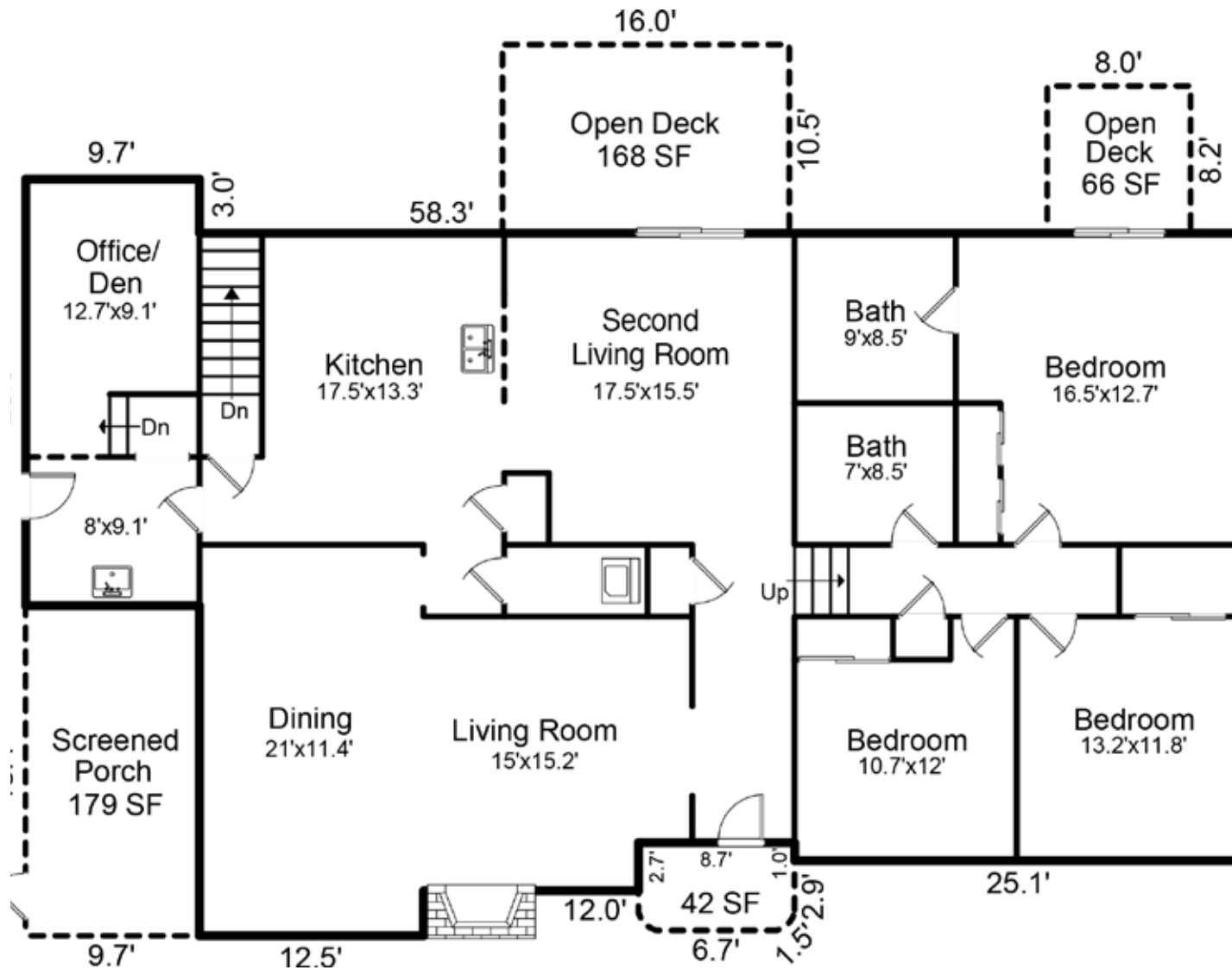
MEGAN SHOOK

828.450.6797

MEGAN@MYMOSAICREALTY.COM

DIRECTIONS

FROM DOWNTOWN ASHEVILLE: Take Merrimon Ave north toward Beaver Lake. Turn right on Wembley. Turn left on Stratford past the Country Club of Asheville. Home will be on your left.



MAIN LEVEL

