

Boundary Lines for Reference Only



95 SHOPE CREEK ROAD

Private Home on Recombined Parcel • New Price and Lot Configuration



MOSAIC

COMMUNITY LIFESTYLE REALTY

4 Bedrooms, 3 Bathrooms
1,932 SF Main + 1,531 SF Basement • 3.4 Acres
MLS #4080589



INFO

95 Shope Creek Road
Asheville, NC 28805

4 Bedrooms, 3 Bathrooms

1,932 SF Main + 1,531 SF Basement

3.4 Acres (pending recombination approval)

MLS #4080589

FEATURES

- Majestic, floor-to-ceiling stone fireplace
- Fully renovated chef's kitchen
 - › Expansive quartz countertops with large island (97 in. x 37.5 in.)
 - › Kitchen Works sink
 - › Custom cabinets
 - › New appliances including custom hood over range
 - › Double oven
 - › Microwave drawer
 - › New designer lighting in kitchen, dining room with dimmer options
 - › Custom cookie sheet cabinet
 - › Enlarged kitchen window so there is a full view of the woods from the front door
- Fully renovated bathrooms
 - › Primary: Soaker tub, hidden electrical outlet in drawer
 - › Large guest bath: Tub/shower combination, custom mirror frame
 - › Small guest bath: Walk-in shower with safety rails, floating vanity
- New vinyl plank flooring throughout



Private Setting

IMPROVEMENTS

- Removed wall between the dining room and living room
- Removed popcorn ceiling in entrance hallways, kitchen and great room
- Replaced all ceiling fans/new lighting fixtures throughout
- All walls throughout repaired and painted
- Newly painted home exterior
- Installed Generac generator with LP 320 container
- Pumped septic and found no issues (August 2022)
- Installed whole-house water filtration system so there is filtered drinkable water from any tap
- Replaced the electrical panel

IMPROVEMENTS (CONTINUED)

- Updated electrical throughout
- Installed 40-gallon water heater with virtual alarm via cell phone
- Removed wood-burner stove, cleaned chimney and fireplace — brought up to code with flue liner and energy-efficient fireplace doors that are as airtight as a wood-burning stove's doors

EXTERIOR

- Freshly painted exterior, front and garage doors
- Electric fence surrounding acreage
- Posts for security gate in driveway
- Installed motion sensor flood lights around the house for full coverage
- Landscaped front yard
- Replaced porch lights front and back
- Installed Ring doorbell
- Front deck has built-in seating, winter mountain views, and afternoon sun
- Installed gutter shields
- Installed fence in back yard
- Large, open back deck
- Installed dog door into fenced-in back yard
- Pressure washed, sanded, and stained both front and back decks
- Cut and removed dead trees near house
- Established trails in the woods to enjoy the small creek and nature
- Azalea-lined driveway; beautiful rhododendrons throughout the property

OTHER 'ATTENTION TO DETAIL' ITEMS

- Removed wall from front entrance hallway to kitchen and enlarged kitchen window so the back woods are visible from the front entry



Wood-Burning Fireplace

- Coordinated glass and globe shapes for the lighting in front entry, kitchen and dining room
- Outlets at each end of the kitchen island
- TVs are wall mounted with hidden outlets; living room TV is also visible from dining room and part of kitchen
- Washer and dryer moved from middle bedroom to basement so there is a usable fourth bedroom
- Hidden outlet in middle drawer in primary bathroom
- Mounted makeup mirror in primary bathroom
- All bathrooms have handheld shower option
- Each of three bathrooms have unique designs — floors in each bathroom have differently sized hexagon tiles to make design elements consistent
- Gold and black fixtures in bathrooms and kitchen all coordinate
- Private paved driveway to home



Gentle, Flowing Floor Plan



Vaulted Ceilings with Recessed Lighting in Living Room



Stone Hearth with New Flue Liner, High-End Glass Door



Reading Nook



Custom Touches throughout House



Back Deck Access off Kitchen



Chef's Kitchen with All-New Appliances



Enjoy Bar-Top Dining



Microwave Drawer and Plenty of Cabinet Space



Cozy Primary Bedroom



Great Seasonal Views through the Triple Window



Walk-in Closet



Double Vanity in Primary Bathroom



All Bedrooms Have Ceiling Fans with Lights



Treehouse Feel in Back Bedroom



Fourth Bedroom Makes a Great Office Space



Double Vanity and Shower/Tub in Hallway Bathroom



Creative Bathroom Design with River Stones



Fenced-in Backyard



Private Space for Enjoying Nature



Perfect for Al Fresco Dining



Property Shares a Border with Buffalo Mountain Estate



Established Walking Trails



Front Porch



Newly Remodeled Home

Recombination of parcel (with new price and lot configuration) is pending county approval; road maintenance agreement and some deed restrictions will apply. Love where you live in this private home, nestled in the mountains of East Asheville. Rare-to-find, premium property with gentle terrain and buildable land holds a stunning 4 BR/3 BA home with a convenient split-bedroom floor plan. The centerpiece is the chef's kitchen with new stainless steel appliances, quartz counters, and an oversized island, perfect for entertaining. Living/dining areas have a vaulted ceiling, plus access to the back deck and fenced-in yard. Enjoy a cozy fire in your living room this winter — or bundle up and head out to enjoy the surroundings. Large, unfinished basement on slab offers expansion options. Other features include established trails, a paved driveway, and a Generac generator. National forest at the end of the road. Less than 15 minutes to downtown Asheville. No drive-bys, by appointment only!



For more information, please contact:

STACEY ENOS

828.712.2069

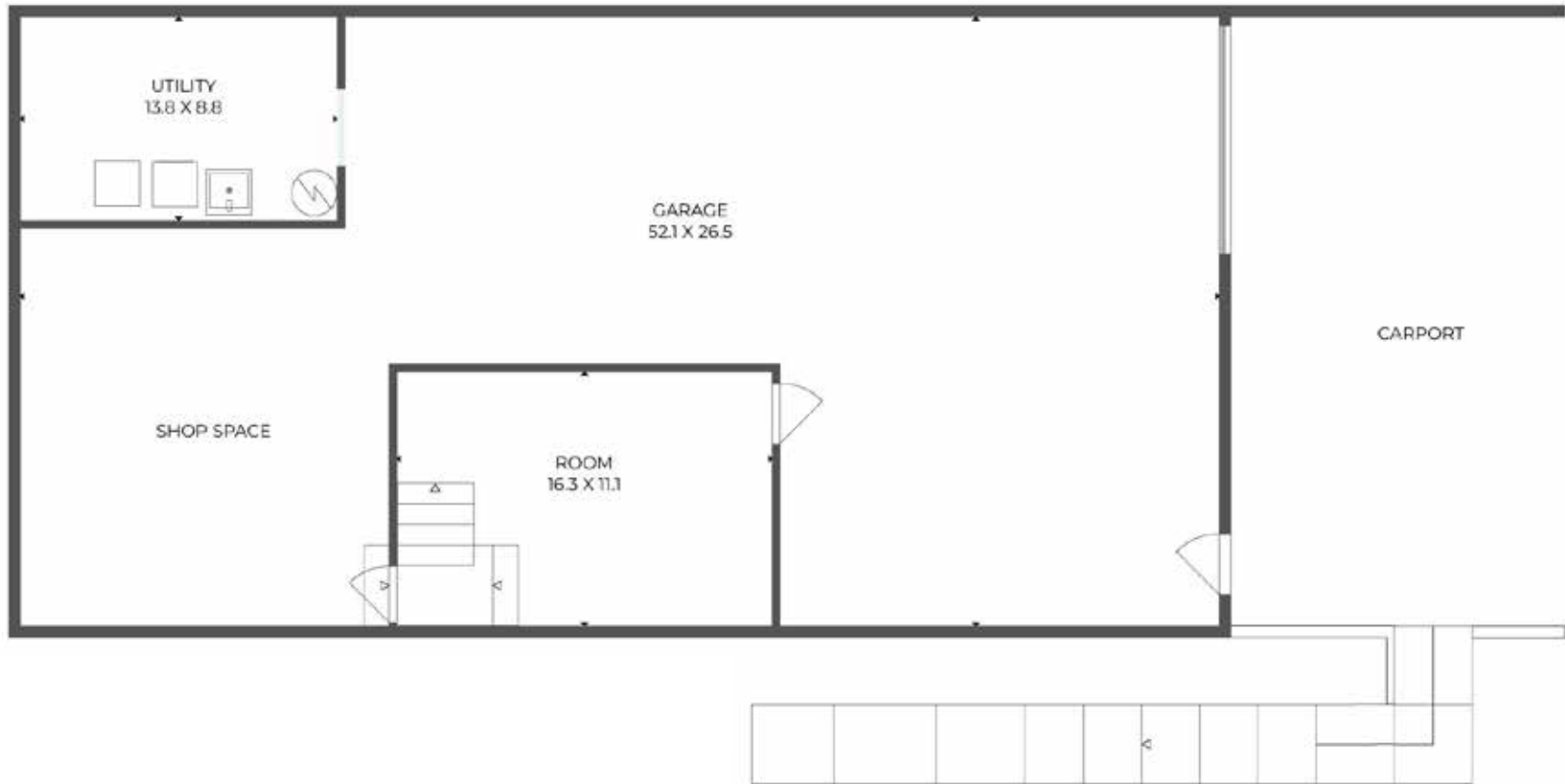
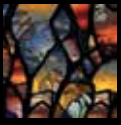
STACEY@MYMOSAICREALTY.COM

DIRECTIONS

FROM DOWNTOWN ASHEVILLE: Take US-70 to Riceville Road, turn onto Bull Creek, and then take your first right onto Shope Creek Road. House will be on your right.



MAIN LEVEL



BASEMENT LEVEL