



**MOSAIC**  
COMMUNITY LIFESTYLE  
**REALTY**

**HORSE SHOE**



**559 SHINING ROCK PATH | HORSE SHOE, NC 28742**



## BEAUTIFUL, MODERN MOUNTAIN HOME IN THE HOMESTEAD AT MILLS RIVER

... ideally located near Hendersonville, South Asheville and Brevard, with quick access to Pisgah Forest's renowned hiking and biking trails. A vaulted ceiling with exposed beams, a dramatic fireplace wall, and expansive Kolbe windows fill the great room with natural light and panoramic views of the surrounding trees. The gourmet kitchen boasts quartz counters, KitchenAid appliances, a tiled backsplash, soft-close cabinetry, and a large island, plus sliding doors that open to a private porch nestled among the trees. The primary suite offers two walk-in closets and a spa-inspired bath, while a main-floor guest suite, office, and laundry add convenience. Downstairs, enjoy a versatile bonus room with wet bar, plus two bedrooms and a full bath. Outdoors, terraced stone landscaping, lit pathways, and a flagstone patio with fire pit, string lights, and projector screen create a magical setting under the trees for evening gatherings. Community amenities include the River Reserve clubhouse with private river access.

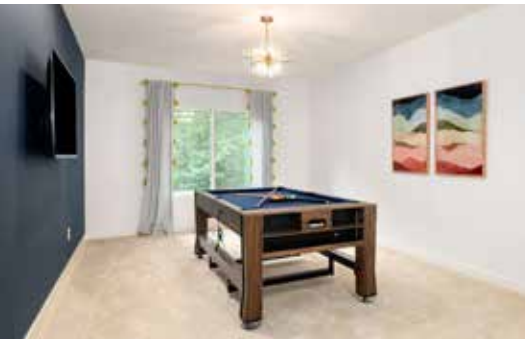
4 BEDS | 3 BATHS | 3,338 SF | 1.9 ACRES



TRENTON THOMAS  
828-216-2551  
TRENTON@MYMOSAICREALTY.COM

# 559 SHINING ROCK PATH

HORSE SHOE, NC 28742



# 559 SHINING ROCK PATH | HORSE SHOE, NC 28742

4 BEDS | 3 BATHS | 3,338 SF | 1.9 ACRES

## FEATURES

Beautiful, modern residence situated in the **highly sought-after Homestead at Mills River** community. **Private lot** within a **gated community**

**Great location**, in close proximity to South Asheville, Hendersonville, and Pisgah Forest

**Close proximity to Asheville Regional Airport, Sierra Nevada Brewing, The Riveter Bike and Climbing Park, North Mills River Recreation Area**

Copious amounts of **renowned hiking and biking trails are a short drive away**

**Scenic and spacious lot with beautiful mature landscaping**, highlighted by a stunning Japanese maple tree gracing the front yard

**Soaring vaulted ceiling with exposed beams** in the great room, and a **large feature wall with fireplace**, adding architectural drama and warmth to the room

**Modern fixtures with sleek pendant lights and a statement chandelier** blend contemporary and boho-chic style

**Expansive Kolbe windows** create a striking glass wall that floods the great room and kitchen with natural light, with sweeping views of trees and greenery

**Beautiful white oak flooring** spans the main level; the lower floor has the comfort and warmth of **brand-new carpeting**

The **spacious dining area** flows seamlessly for everyday meals or entertaining

The **gourmet kitchen** showcases **quartz counters, a tiled backsplash, KitchenAid appliances, accent lighting, and soft-close cabinetry**

**Large center island** provides additional prep space, storage, and makes a great casual gathering spot

Sliding glass doors open from the kitchen onto a **serene patio nestled among the trees**, your own private perch overlooking the backyard

CONTINUED, NEXT PAGE ›



# 559 SHINING ROCK PATH | HORSE SHOE, NC 28742

4 BEDS | 3 BATHS | 3,338 SF | 1.9 ACRES

## FEATURES (CONTINUED)

**Spacious, dedicated office** with backyard views provides a calm setting for work or study

**Spacious primary suite** offers a serene respite with a **bold accent wall, clerestory windows, and two large walk-in closets**

**Spa-inspired ensuite bathroom** offers a refined retreat with **dual vanities, generous countertop space, a glass-enclosed shower with elegant tilework, coordinating tiled floors, modern lighting and thoughtful finishes**

The **main-floor guest suite** features a bright bedroom with views of the front yard and an adjoining full bath with contemporary finishes, offering both comfort and privacy

**Dedicated laundry room** on the main level

The **versatile bonus room** is currently styled as a game room, with space for a pool table, media setup, or lounge area, and includes an **adjacent custom wet bar with beverage fridge and open shelving**

**Two additional bedrooms share a well-appointed bathroom** featuring a double vanity, sleek cabinetry with ample storage, and a tiled tub/shower combo

A **charming stone pathway** leads from the front entry to the expansive backyard, blending curb appeal with outdoor living

The **backyard showcases terraced stone landscaping, beautifully lit pathways, and a flagstone patio with fire pit** framed by string lighting. A **built-in projector screen** creates a magical setting for evening gatherings, outdoor movies, or quiet nights by the fire

**The River Reserve Clubhouse**, located on 10+ acres along the Mills River, offers private access for fishing, events, and outdoor fun

## DRIVING DIRECTIONS

FROM DOWNTOWN ASHEVILLE: From NC-280, turn right on North Mills River Road. Turn left on Whitaker Road, then right onto Mills River Way at the entrance to the Homestead. After entering the gate, turn right onto Shining Rock Path and continue to 559 Shining Rock Path on the left. No drive-bys; gated community.



# 559 SHINING ROCK PATH | HORSE SHOE, NC 28742

4 BEDS | 3 BATHS | 3,338 SF | 1.9 ACRES

## MAIN LEVEL



## LOWER LEVEL

