



MOSAIC
COMMUNITY LIFESTYLE
REALTY

NORTH ASHEVILLE



41 SHADY PARK LANE | ASHEVILLE, NC 28804

41 SHADY PARK LANE
ASHEVILLE, NC 28804



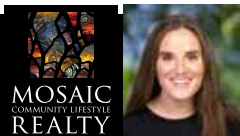
NORTH ASHEVILLE



STUNNING, YEAR-ROUND MOUNTAIN VIEWS AND INCREDIBLE SUNSETS

... await at this beautiful green-built North Asheville home, less than five minutes to downtown, the Grove Park Inn, and blocks from the Charlotte Street corridor filled with local eateries. This 2014 three-level home has a deck for each level, a private and spacious primary suite, and a modern open floor plan. Primary suite includes a screened-in deck, walk-in closet, an office nook, and relaxing ensuite bath. Enjoy it as your everyday residence or as your lock-and-go mountain getaway with its easy, low-maintenance living: HOA includes mowing, trash, water, sewer, and recycling. The Sunset Park neighborhood sits in an area ideal for walking, biking, and enjoying all that Asheville city living has to offer. See video and floor plan for more details.

3 BEDS | 2.5 BATHS | 2,050 SF | 0.03 ACRE | MLS #4164683



MEGAN SHOOK
828-450-6797
MEGAN@MYMOSAICREALTY.COM

41 SHADY PARK LANE

ASHEVILLE, NC 28804



41 SHADY PARK LANE | ASHEVILLE, NC 28804

3 BEDS | 2.5 BATHS | 2,050 SF | 0.03 ACRE | MLS #4164683

FEATURES

- Stunning, year-round mountain views, just blocks from north Asheville's Charlotte Street corridor that includes Taco Temple, Metro Wines, City Bakery, Starbucks, Charlotte St. Pub and Grill, and more
- Minutes to downtown Asheville and all of the everyday amenities you'd need, such as Trader Joe's, Harris Teeter, Ace Hardware, Weaver Park recreation, UNCA campus, and the Botanical Gardens
- Sunset Park is a small community perched above the city, providing low-maintenance living with an HOA that maintains the road and green spaces
- Plenty of outside space for relaxing and hosting, as each level has its own deck, plus the inviting covered front deck that greets you
- West-facing home sits on one of the best lots within the neighborhood with long-range, year-round mountain views and jaw-dropping sunsets
- Entry level has a modern open floor plan and its own open deck for hosting friends and grilling out
- Kitchen features a spacious island with a built-in microwave, beautiful cabinetry, and plenty of countertop space
- Living area includes a beautiful mantel, gas fireplace with tile surround, a coat closet, and an abundance of windows providing natural light
- Primary suite is private and spacious — includes an office nook, large walk-in closet with washer-dryer (to convey), and its own screened-in covered deck
- Primary bathroom features a double vanity, walk-in shower with glass door, and large soaking tub
- Lowest level includes two bedrooms, one full bath with tile surround shower/tub combo, its own deck with yard access, and a large closet under the stairs with second washer-dryer hookups as well as more storage space
- Two-car parking pad, plus street parking nearby
- Home was completed in 2014 — architectural shingle roof, hardboard siding, heat pump, natural gas oven/range and fireplace
- Asheville City Schools district

DIRECTIONS

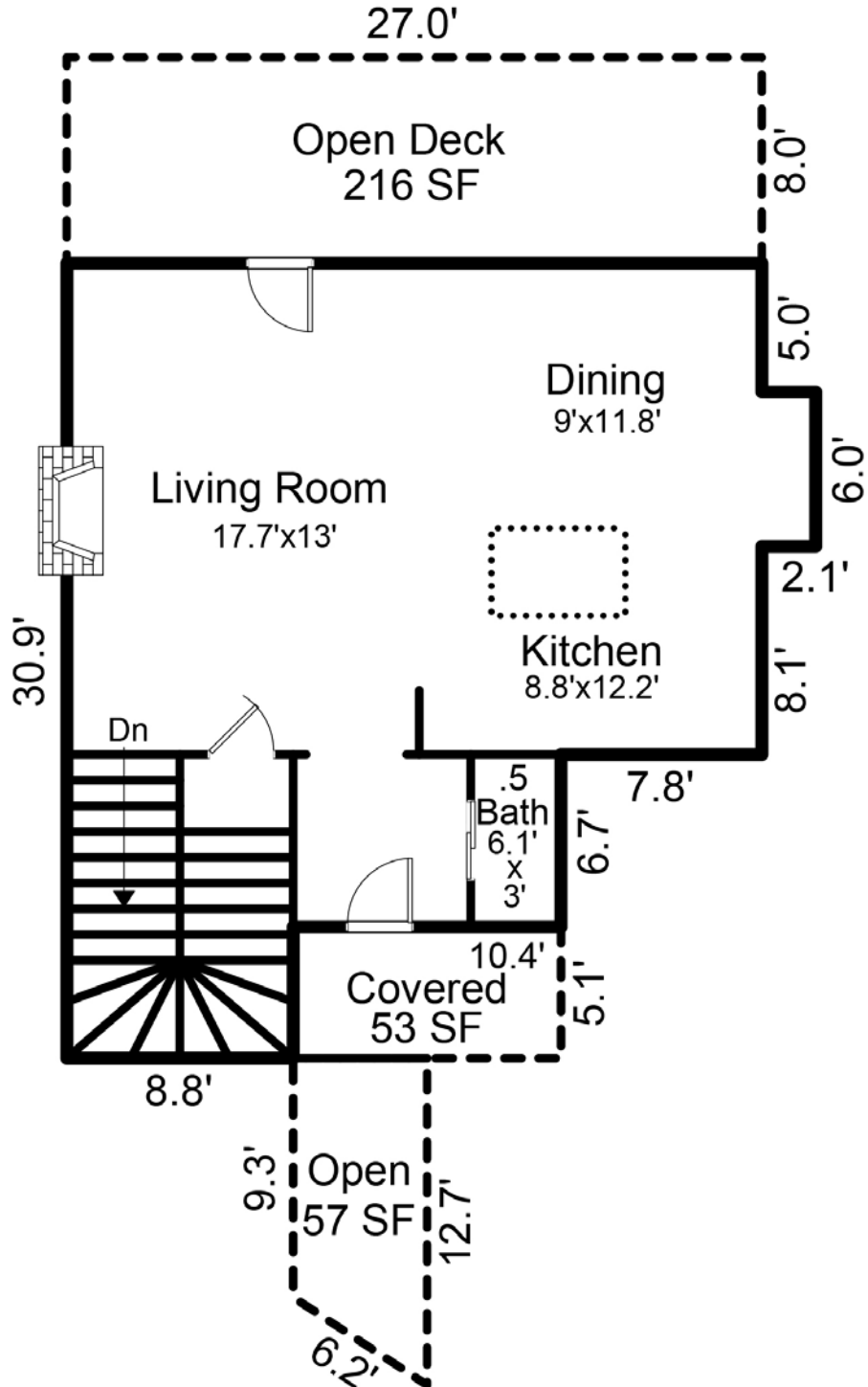
FROM DOWNTOWN ASHEVILLE: Take Charlotte Street toward the Grove Park Inn. Turn right on Baird Street. Turn left on Shady Park Lane. Curve around the neighborhood. Home will be on your right. Two-car parking pad and street parking on Sunset Drive.



41 SHADY PARK LANE | ASHEVILLE, NC 28804

3 BEDS | 2.5 BATHS | 2,050 SF | 0.03 ACRE | MLS #4164683

MAIN LEVEL



41 SHADY PARK LANE | ASHEVILLE, NC 28804

3 BEDS | 2.5 BATHS | 2,050 SF | 0.03 ACRE | MLS #4164683

LOWER LEVEL 2

