



42 SCHENCK PARKWAY, #B08

Light-Filled Gem in Biltmore Park Town Square



MOSAIC
COMMUNITY LIFESTYLE REALTY

1 Bedroom, 1 Bathroom
854 SF • Condo
MLS #4363143



**42 SCHENCK PARKWAY, #B08
ASHEVILLE, NC 28803**

1 Bedroom, 1 Bathroom
854 SF · Condo
MLS #4363143



FEATURES

Light and bright interior

2022 Hvac

Lovely, newer **pre-finished wood flooring**

Stainless steel dishwasher and refrigerator

Biltmore Park Town Square amenities include:

- Private, gated pool
- Clubhouse
- Fitness center
- Street lights
- Sidewalks
- Biltmore Park walking trails

BILTMORE PARK AMENITIES

REI

Athleta

Barnes and Noble

Regal Biltmore Grande Theatre

Orvis

Nine Mile

Luella's BBQ

Cheveux Salon

YMCA with pickleball courts

And so much more—within walking distance!

OTHER NEARBY AMENITIES

Ingles Grocery, 0.7 mile

ACE Hardware, 3.1 miles

Whole Foods, 3.2 miles

Publix, 3.4 miles

Asheville Airport, 3.8 miles

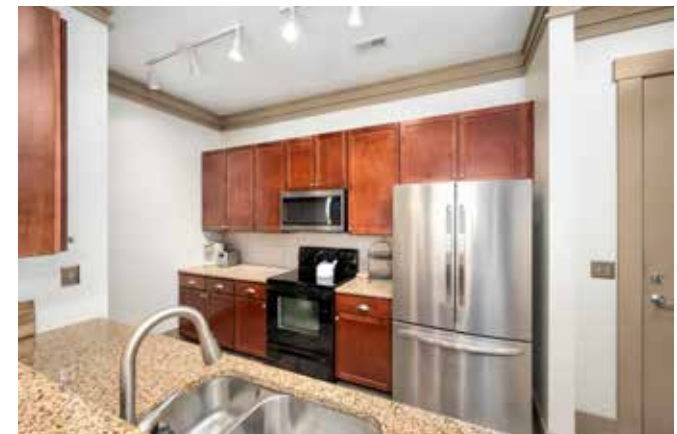
Blue Ridge Parkway, 9.3 miles

Biltmore House, 11.3 miles

Mission Hospital, 11.6 miles

Downtown Asheville, 11.7 miles

Trader Joe's, 12 miles





MOSAIC
COMMUNITY LIFESTYLE REALTY

46 Orchard Street, Suite 100, Asheville, NC 28801
WWW.MYMOSAICREALTY.COM







Easy access to the first-level unit! This light-filled gem in Biltmore Park Town Square boasts ten-foot ceilings, an open-concept kitchen/dining/living area, and one generously sized bedroom with an ensuite bathroom and walk-in closet. The charming covered patio invites relaxation, and the unit includes custom window treatments, plus a washer/dryer. At your doorstep, enjoy walking trails, pocket parks, pickleball courts, a playground, and the pool/clubhouse. Leave the car behind as you stroll to Town Square's high-end boutiques, movie theater, gourmet dining, outdoor cafés, fitness studios, YMCA, and seasonal farmer's market. With one coveted, shaded parking spot near the entrance with elevator access, plus everything you need just steps away, don't miss this rare treasure, offering carefree living in the beautiful Asheville mountains. Biltmore Park is conveniently located minutes from the airport, hospital, and all South Asheville amenities. Furniture, dishware, and linens can be included to make this truly turnkey. Parking spot #38 included.



For more information, please contact:

LEANN BOUND
828-713-2316

LEANN@MYMOSAICREALTY.COM

DRIVING DIRECTIONS

FROM DOWNTOWN ASHEVILLE: Take I-240 W to I-26 E. Take the Long Shoals Road exit. Turn left off exit and left onto Schenck Parkway. Go past REI and straight through the traffic circle. It is the last building on the left. Enter through side entrance and the condo will be the first unit on the left.



FLOOR PLAN